

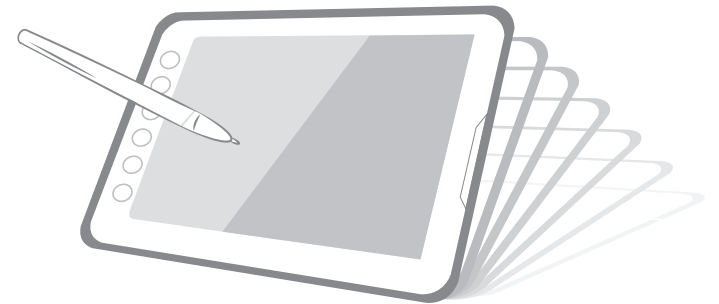


XP-Pen Drawing different

# Portable Pen Display

## Artist 10 Manual

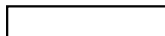
Windows 10/8/7/Vista/XP Mac OS X 10.6.8 or above



XP-Pen

Any questions, please contact us

Skype: XP-Pen  
Web site: [www.xp-pen.com](http://www.xp-pen.com)  
Mail: [service@xp-pen.com](mailto:service@xp-pen.com)



[www.xp-pen.com](http://www.xp-pen.com)

# Contents

<b>I.General Information</b>	1
OVERVIEW	2
Artist 10 FUNCITONS	2
SYSTEM REQUIREMENTS	3
INSTALLING THE DRIVER SOFTWARE ON WINDOWS	3
INSTALLING THE DRIVER SOFTWARE ON MAC	
VERYFYING HARDWARE	6
PEN INSTRUCTIONS	
PEN TIP REPLACEMENT	
HARDWARE INSTALLATION	9
USAGE TIPS	10
MAPPING TO MULTIPLE MONITORS	10
 <b>II.Artist 10 windows configuration</b>	11
THE INFO TAB	12
THE BUTTON TAB	13
Button Name	14
Double Click Time	14
Pen/Eraser Toggle	15
Default	15
EXPRESS KEYS DEFINE TAB	15
Default	15
Re-define Express keys	16
Common	16
Mouse	17
Multimedia	18
Other	19
Run	20

Internet	21
Hot Keys	22
Show Desktop	23
Switch Application	23
3D Switch Application (Win 7/Vista)	23
POP MENU	23
THE PRESSURE TAB	24
Pressure Test	24
Clear	25
Click Sensitivity	25
THE MONITOR SETTING TAB	25
THE CALIBRATION TAB	27
Calibration	27
Rotate	28
THE MONITOR TUNER	29
Brightness	30
Contrast	30
Color Temperatures	30
Restore Default	30

<b>III.Artist 10 Mac Configuration</b>	31
Artist 10 SETTING	32
THE INFO TAB	33
THE PEN TAB	33
Pen Button Setting	34
Pressure Test	35
Click Sensitivity	35
Default Button Setting	35
HOT EXPRESS KEYS DEFINE TAB	36
Default Button Setting	36
Re-define Hot Express keys	37
THE CALIBRATION SETTING TAB	40
<b>IV.Question &amp; Answer</b>	42



## I. General Information

### OVERVIEW

Welcome to the world of Artist 10! You'll be able to discover how easy it is to control your personal computer by using the Artist 10 and stylus instead of a mouse.

The main idea behind the Artist 10 and stylus is to write, draw, sketch or paint as easily as you would with a pencil, pen, or paint brush on normal paper. The P03 simulates the tactile functions of a pencil, pen, or paint brush. The pressure sensitivity technology in the stylus allows you to write and draw with varying degrees of thickness and light/dark depending on your applied hand stroke. The Artist 10 is compatible with commercial software packages such as Adobe® Photoshop™, Corel® Painter™ and Paint Shop™.

### Artist 10 FUNCTIONS

**After installing the device driver, your Artist 10 features the following functions:**

△ Direct pointing – You can move the cursor to any location by hovering the digital pen tip over your Artist 10 screen.

△ Three-button mouse commands - Your Artist 10 provides all the functions of a three button mouse by using its pen tip and two buttons.

△ Pen scrolling – You can scroll documents and Web pages by pressing the middle button of the digital pen over your Artist 10 screen.

△ Pressure sensitivity – This feature allows you to emulate the use of various pencils and brushes. When you apply lighter or heavier amounts of pressure on your stroke while writing you will produce a corresponding lighter/thinner or heavier/thicker pen stroke on the pad.

## SYSTEM REQUIREMENTS

Windows 10/8/7  
Mac OSX 10.7 / 10.8 / 10.9  
USB and HDMI port  
CD/DVD-ROM drive or internet connection

## INSTALLING THE DRIVER SOFTWARE ON WINDOWS

**If you are using Microsoft Windows 10, 8 and 7 operating systems:**

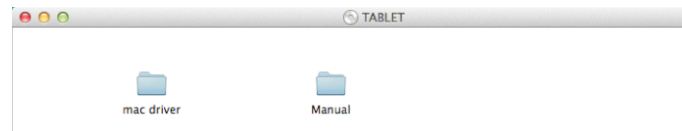
1. Place the DVD into the optical disc drive and wait for the main installation screen to appear.
2. The main installation screen should appear automatically. If for some reason it doesn't, you can manually start the installation by opening **【My Computer】** ► **【DVD ROM】** ► then click on the **【Setup】** program.
3. When installing the driver, follow the installation instructions on screen and press the "Enter" key. After the installation has completed, you need to reboot the computer.
4. If you do not have a CD/DVD driver, download the driver from [www.xp-pen.com](http://www.xp-pen.com) "Supports" page and follow the installation instructions on screen.

→ Caution: You must remove all previously installed tablet driver software before installing the driver (including pen tablet driver software from another brand.)

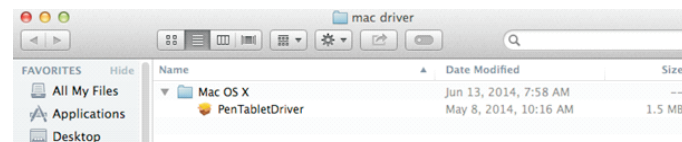
## INSTALLING THE DRIVER SOFTWARE ON MAC

**To install the driver, just follow the installation instructions below:**

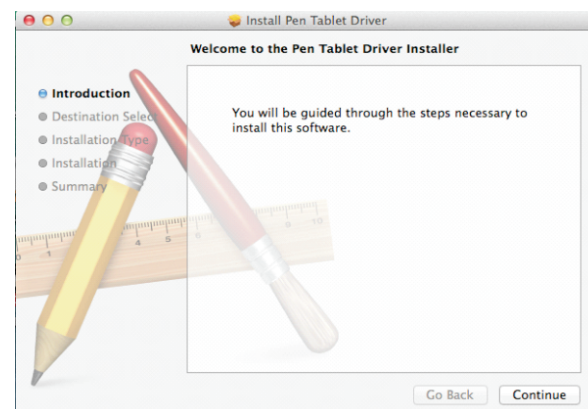
1. Place the included Driver CD into the optical disc drive.



2. Select **【mac driver】** ► **【Mac OS X】** ► **【PenTabletDriver】** for installation.

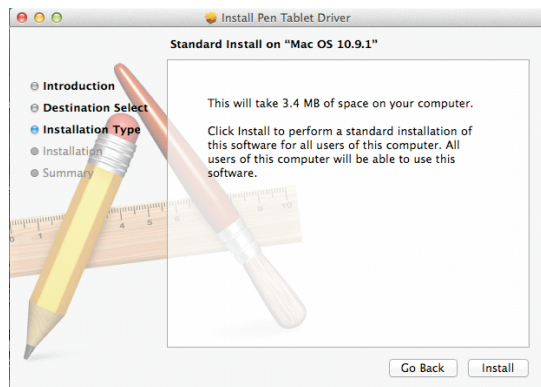


3. Continue to follow the installation instructions on screen.
  - 3.1 Click **【Continue】**

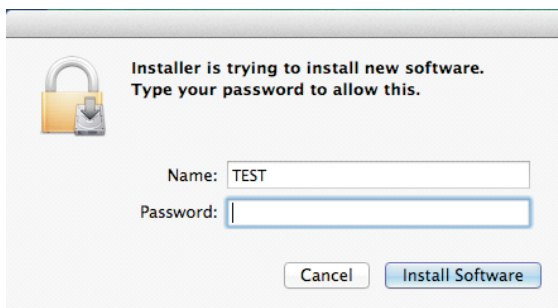




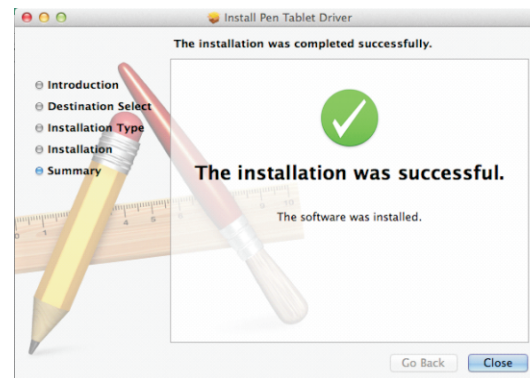
### 3.2 Click 【Install】



### 3.3 Enter your user name and password. Click 【Install Software】.



### 3.4 Click 【Close】 to complete the installation.



4. If you do not have the included CD/DVD driver disc or a CD/DVD disc drive, it is available for download at [www.xp-pen.com](http://www.xp-pen.com). Go to the "Support" page and follow the installation instructions on screen.

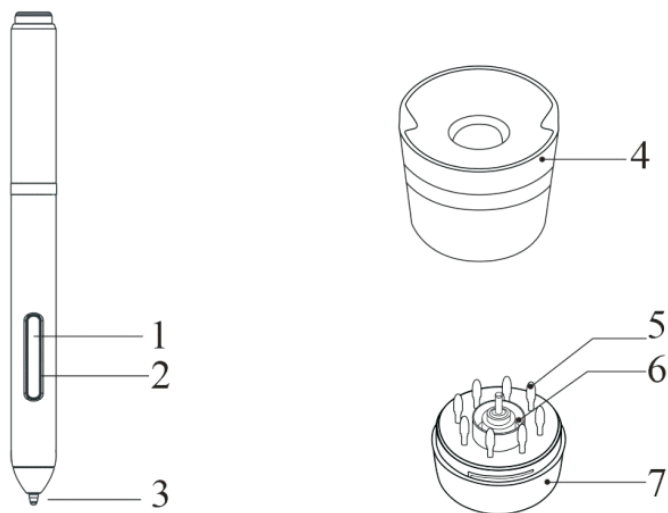
## VERIFYING HARDWARE

Your Artist 10 and package contents are list below. If anything is missing, contact your dealer immediately.

Content in box:

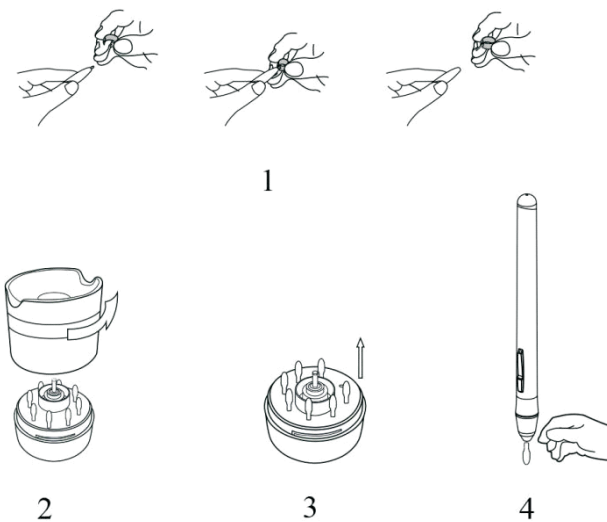
1. Artist 10 graphic tablet monitor
2. 2-in-1 Cable
3. Cordless pressure stylus pen
4. Instructional and installation CD-ROM disc
5. User's manual
6. Pen stand

## PEN INSTRUCTIONS



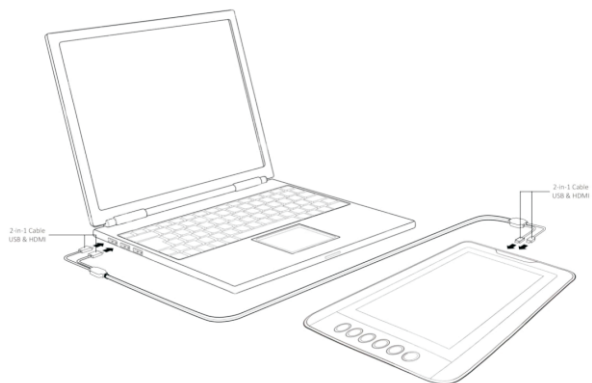
1. The second barrel button
2. The first barrel button
3. Pen tip
4. Upper pen stand
5. The spare pen tips
6. Pen clip
7. Pen stand bottom

## PEN TIP REPLACEMENT



1. Pull out the worn pen tip from the digital pen by using a pen clip.
2. Rotate the upper cap in an anti-clockwise direction for 75° and remove it.
3. Take the pen tip out.
4. Replace it with a new one.

## HARDWARE INSTALLATION



Connect your Artist 10 to your computer using the included 2-in-1 cable using the HDMI & USB ports on your computer after you have finished the driver installation and restarted Windows OS.

If the device has been successfully installed, you will see a small Artist 10 icon (🖊️) appear in the system tray, which is normally at the bottom right corner of the screen.

## USAGE TIPS

### 1. Double tapping

When you double tap with the digital pen (equivalent to a double click with a mouse), you must keep the pen tip away from the Artist 10 screen. In order to properly execute the double tap you must lift the pen from the screen before the second tap, this can be done very quickly.

### 2. Scrolling function of the digital pen

The digital pen has the same function as a normal mouse for scrolling pages. Just press the first button of the digital pen (same function as the mouse middle button) over the Artist 10 screen.

### 3. Using a pen without an ordinary mouse

You may install the Artist 10 and a mouse on your computer at the same time. However, you may only use toggle between the mouse or pad/pen. The Artist 10's pen and mouse cannot operate simultaneously.

## MAPPING TO MULTIPLE MONITORS

If your computer is equipped with more than one monitor, the display resolution of your other monitor must be the same resolution as your Artist 10. Otherwise, the pen cursor will be misplaced on the screen. For Artist 10, you must set the connected monitor's resolution at 1280 x 800.

## II. Artist 10 windows configuration

### Artist 10 settings:

Click [Start] > [Settings] > [Control Panel], and double-tap the Artist 10 icon (🖋️) in the system tray usually located at the bottom right corner of the screen.

### THE INFO TAB

The Info tab displays the current driver software version and OS.



## 1. Show Icon in System Tray

Select to show the Artist 10 icon (🖊️) in the system tray.

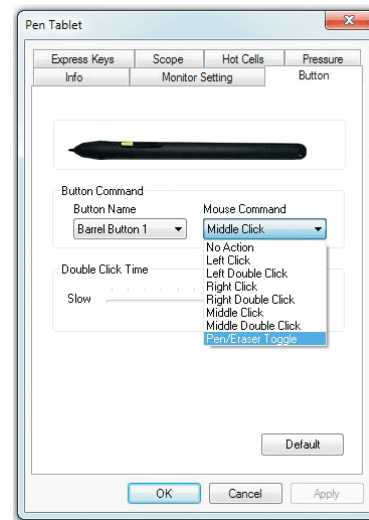
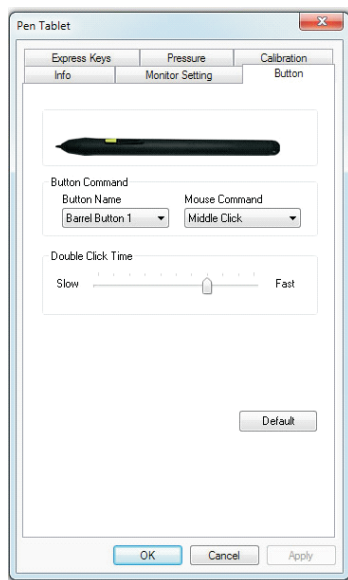
## 2. Support Digital Ink

Select to activate use of the stylus pen with your computer.

→ After the Artist 10 driver has been installed in Windows, your stylus pen should now fully function in MS Journal, OneNote (2003, 2007), etc.

→ If the Tablet PC setting is disabled, most of the art software pen's pressure (Photoshop, Illustrator, Corel Painter) is still working, but pen pressure will not be available when using MS Journal, OneNote (2003, 2007), etc.

### THE BUTTON SETTINGS TAB



### Button Name

You may re-program the functions of the pen's two-barrel buttons by selecting a command from the drop down menu for the designated Pen button.

When operating in Mouse Coordinate Mode, you can select from standard Mouse commands: "No Action", "Left Click", "Left Double Click", "Right Click", "Middle Click" or "Pen/Eraser" Toggle.

### Double Click Time

Move the Speed Slider toward "Slow" if you want a slower response in between clicks while double tapping. Move the Speed Slider toward "Fast" for a quicker response time when double clicking. This setting is the same as the Double-click Speed under the standard mouse settings: Start ► Control Panel ► Mouse ► Buttons. Changing the speed in one section is the same as changing the speed in the other tab.

## Pen/Eraser Toggle

Pen/Eraser toggle function only works on the supported graphics software or digital ink software. You must select "Supports Digital Ink" option on the info tab to activate this function.

### Default

Click on the Default button to restore the system to the original manufacturer settings.

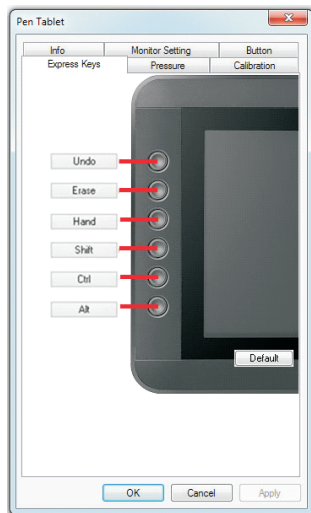
## EXPRESS KEYS SETTINGS TAB

### Express Keys:

You can modify the Express Keys & Scroll settings using the Express Keys configuration page.

#### Default

Return the Express Keys to the default settings.



## Customizing the Express Keys

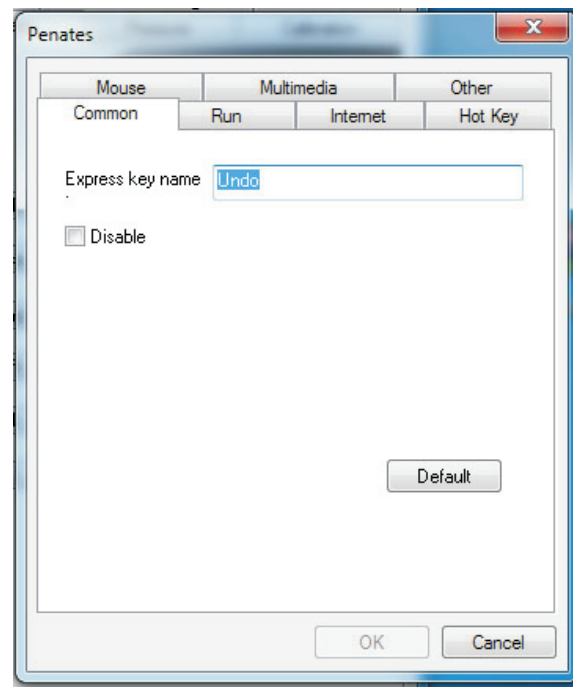
Select "Common", "Mouse", "Multimedia", "Other", "Run", "Internet" or "Hot Key" from the drop down menu to re-define the Express Key command.

### Common

**Express key name:** Rename the Express Key.

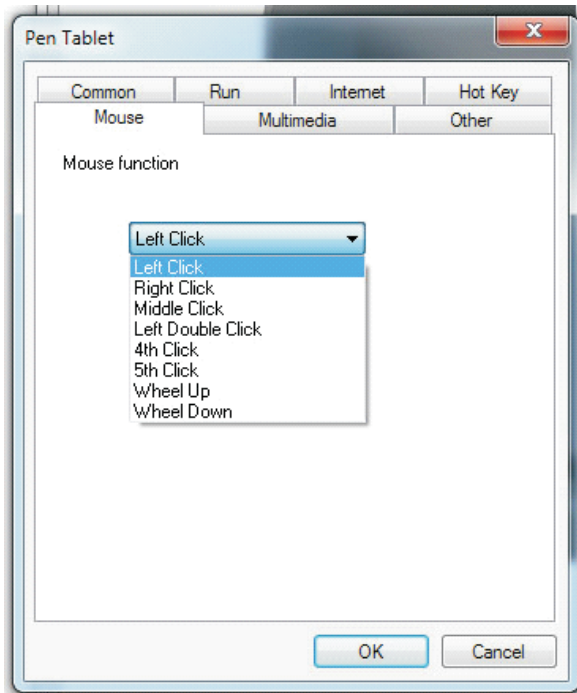
**Disable:** Disable the Express Key name display on the Artist 10 control panel.

**Default:** Return the Express Key name to the default setting.



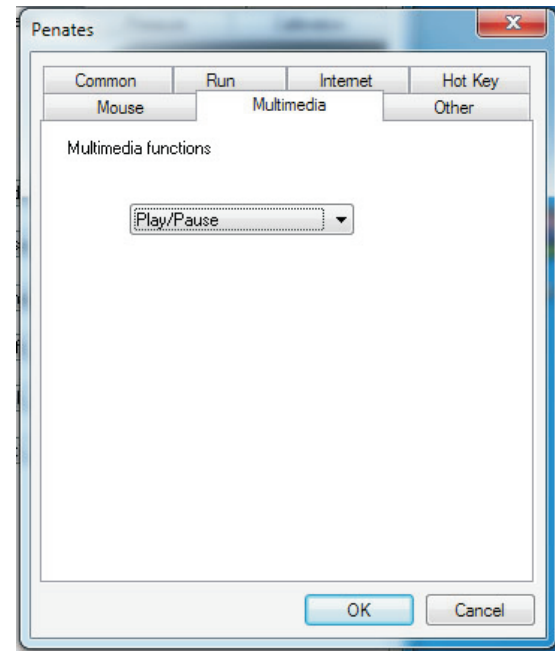
## Mouse

**Mouse function:** Select to use traditional Mouse mode settings.



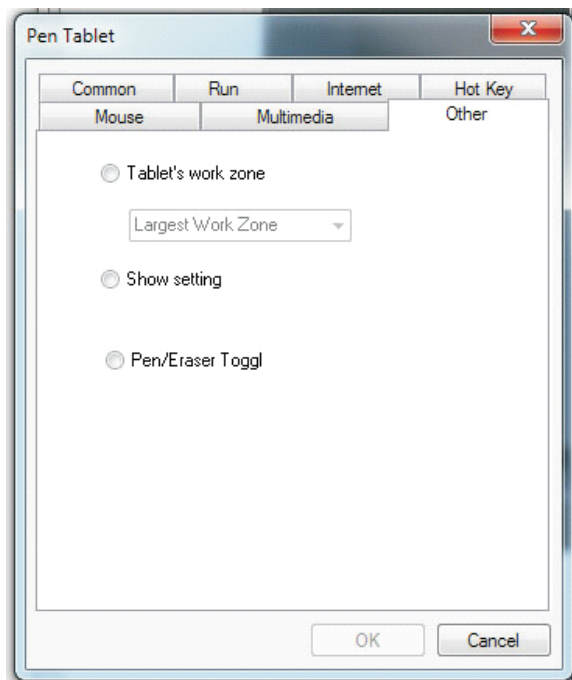
## Multimedia function settings

**Multimedia functions:** "Play/Pause", "Stop", "Previous", "Next", "Mute", "Volume Up", and "Volume Down".



## Other

**Tablet's work zone:** Select "Largest Work Zone" or "Screen Ratio".  
**Show setting:** select to display current settings.

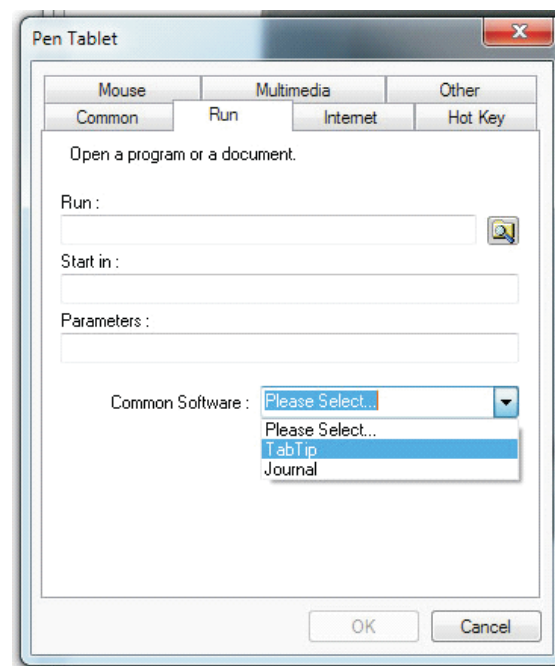


## Run

**Run:** Use the browser search button to select a file and run, or type in a file name with the complete path.

**Start in:** This is the initial folder where the program executes from.

**Parameters:** The string type will be passed to the program as parameters. For example, you may type in a document name here and pass it to a word processing program specified in the Run line above.





## Internet

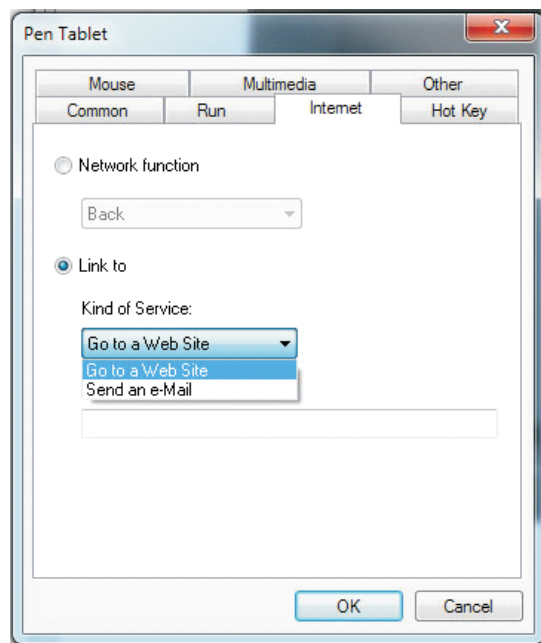
### Network function:

Select "Previous Page", "Next Page", "Refresh", "Stop", "My Favorite", "IE", "Email".

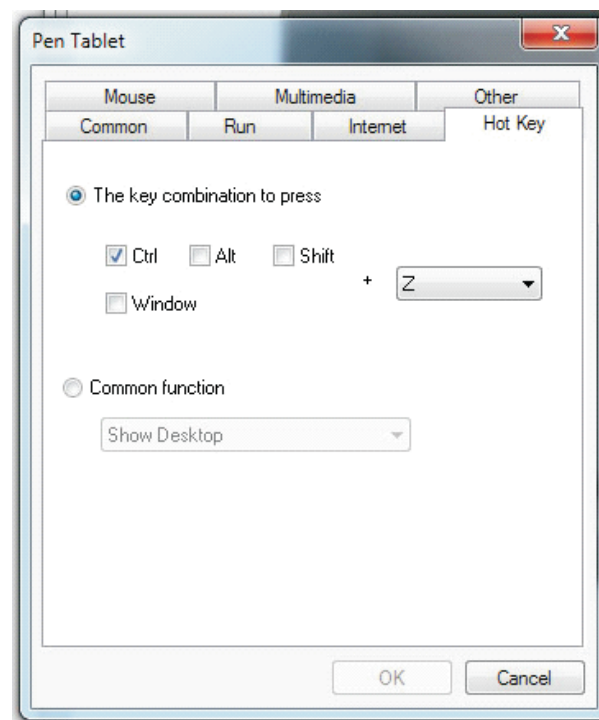
### Link to:

**Kind of Service:** Select an Internet service to start. For example: browsing a website, or opening your email. The exact program initiated (for example, the browser program) depends on system settings.

**Address:** Enter the URL address for the selected service. For example, the Website or e-mail address.



## Hot Key



**The key combination to press:** Select Ctrl, Alt, Shift or Window in combination and a key from the drop down menu to create your preferred keystroke combination.

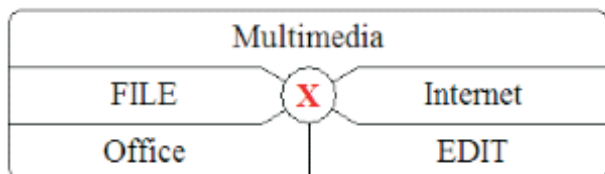
**Common function:** Select a hot-key command from the commonly used functions.

**Show Desktop:** press the hot-key to display the desktop immediately.

**Switch Application:** press the hot-key to switch between all the opened windows. (This function only works on compatible systems that support this feature.)

**3D Switch Application (Win 7/Vista):** press the hot-key to activate the Windows Flip 3D function to quickly preview all your open windows. (This function only works on compatible systems that support this feature.)

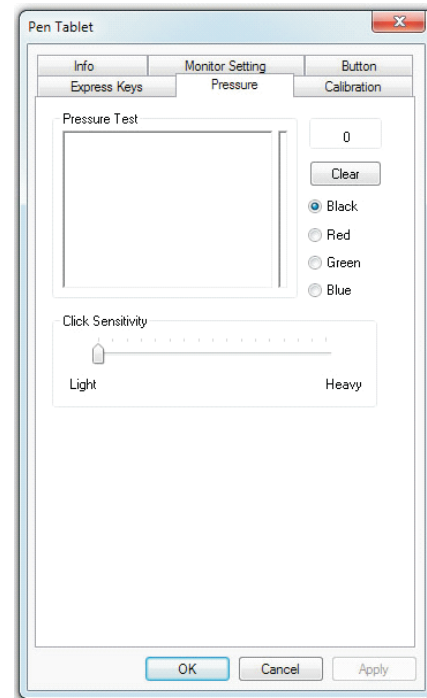
**POP MENU:** press the hot-key to activate the POP UP MENU for these frequently used functions:



## THE PRESSURE TAB

### Pressure Test:

The Pressure Test area allows you to adjust the Click Sensitivity, which corresponds to the width of your pen stroke lines based on the sensitivity of your applied hand pressure; A Lighter setting will create thinner lines, while a Heavier setting will create thicker lines. We suggest you take the time to adjust the Click Sensitivity to your ideal preference. There are four different colors you can select while testing the pressure sensitivity.



## Clear

Tap on the **【Clear】** button to delete and refresh the Pressure Test area.

## Click Sensitivity

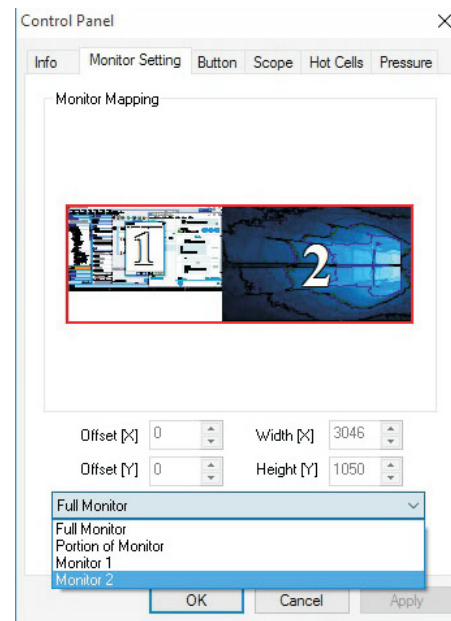
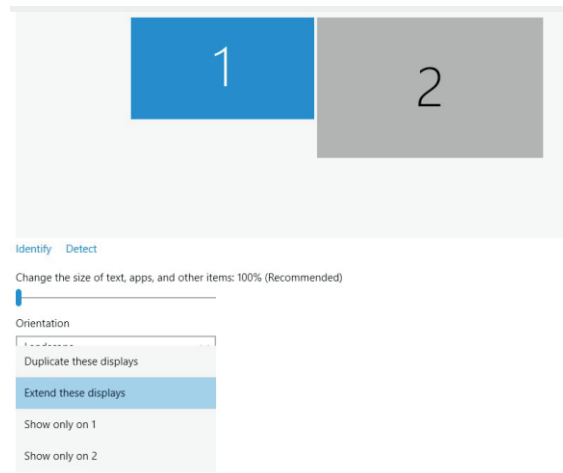
The Click Sensitivity corresponds to the width of your pen stroke lines based on the sensitivity of your applied hand pressure; A Lighter setting will create thinner lines, while a Heavier setting will create thicker lines. On the default setting, tapping with the pen tip is equivalent to a left click on a traditional mouse. Move the slider in the sensitivity bar to adjust the response of the pen tip.

## THE MONITOR SETTINGS TAB

When selecting the "Extend these displays" mode under the "Multiple Displays" options, please use the Artist 10 "Monitor Setting" page to select your tablet's corresponding screen number first in order to facilitate the customized settings.

Multiple Displays: Monitor 1 and 2 must set the same DPI.

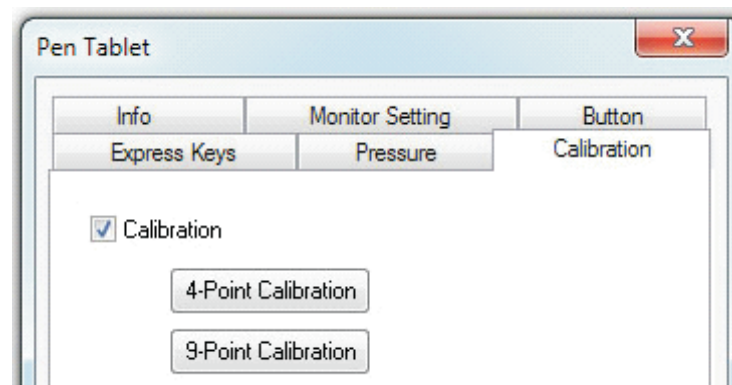
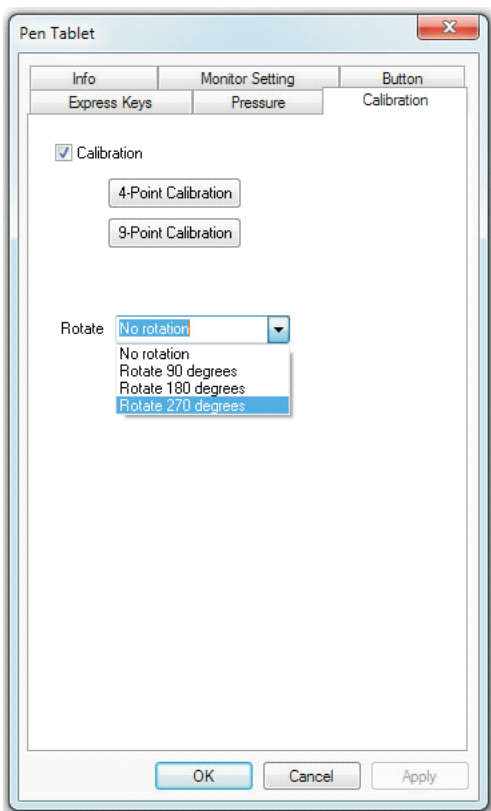
Extend these display: You must go the "Pen Tablet - Monitor Setting" to select your Artist 10 corresponding screen monitor 1 or 2.



Click "OK" when you are finished configuring the settings.

## THE CALIBRATION TAB

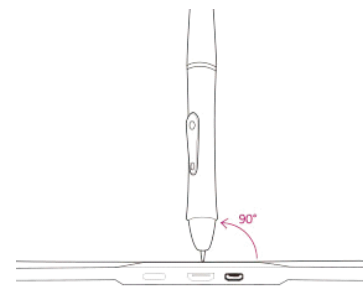
### Calibration



Check "Calibration" and select "4-Point Calibration" or "9-Point Calibration" to activate the calibration screen.

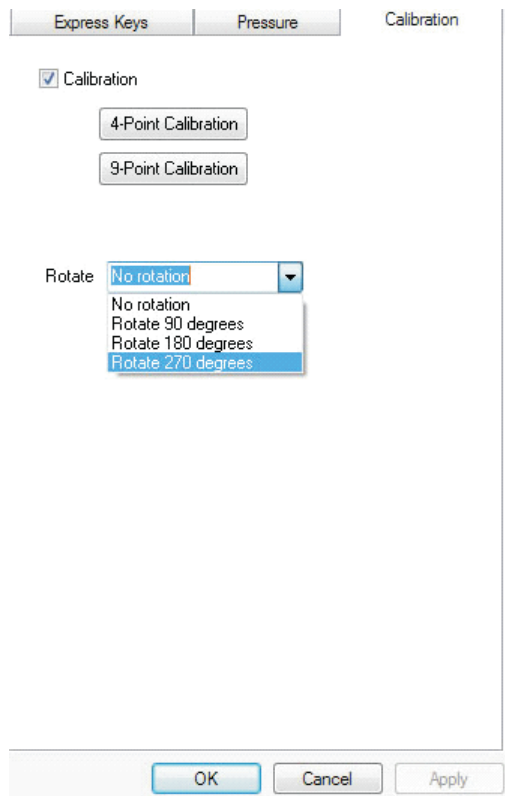
Hold the pen vertically at 90° and use the pen tip to click on the center of the crosshairs to calibrate.

Click "OK" to end the calibration.



## Rotate

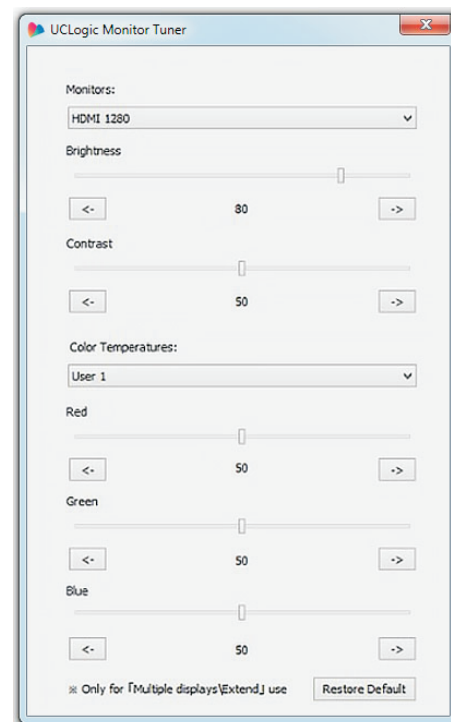
Select the degree of rotation that you would like to apply to the orientation of your Artist 10 screen.



## THE MONITOR TUNER

If you are selecting the "Extend the displays" mode under the "Multiple Display" function, you may configure the Artist 10 monitor's Brightness, Contrast and Color Temperatures.

[Start] > [All Programs] > [Tablet] > [Logic Monitor Tuner]



### Brightness

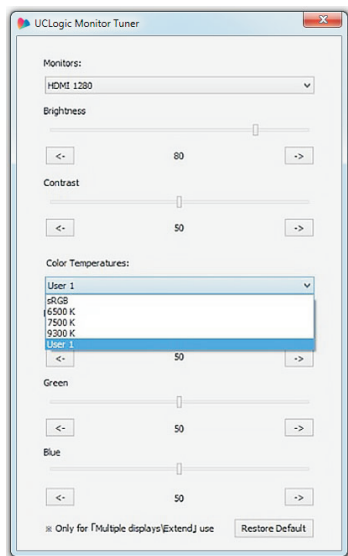
Adjust the brightness of your Artist 10 screen by selecting “Increase” or “Decrease”.

### Contrast

Adjust the contrast of your Artist 10 screen by selecting “Increase” or “Decrease”.

### Color Temperatures

You can select the default color temperature settings or “User 1” to customize it.



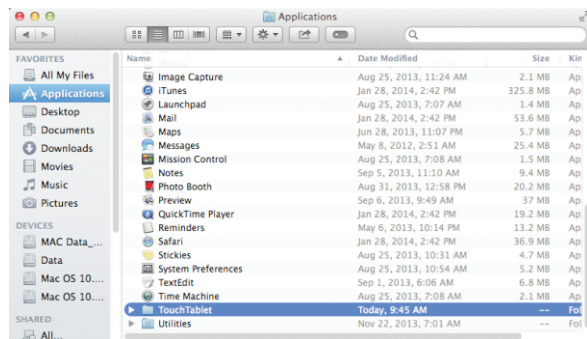
### Restore Default

Click “Restore Default” to restore the original manufacturer settings.

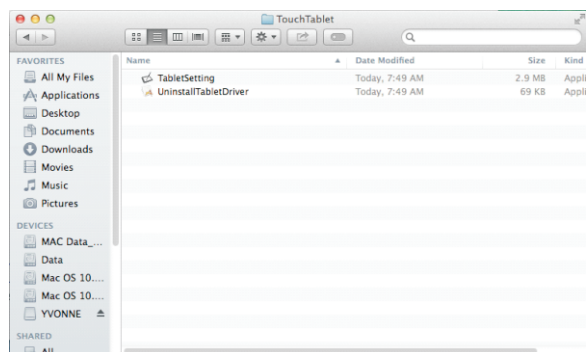
## III.Artist 10 Mac configuration

## Artist 10 Settings

### 1.1 Click 【GO】 ▶ 【Applications】

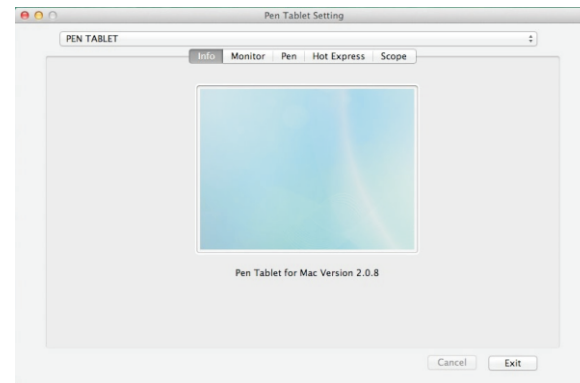


### 1.2 Click 【TouchTablet】 ▶ 【Tablet Setting】

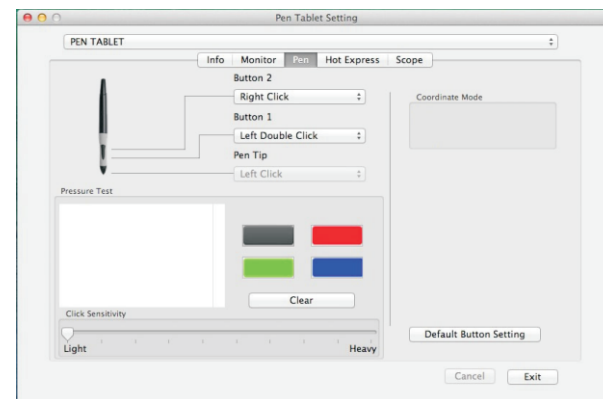


## THE INFO TAB

The Info tab displays the current driver software version and OS.



## THE PEN SETTINGS TAB

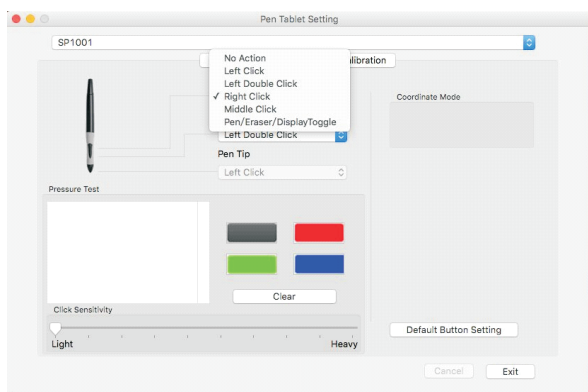


## Pen Button Settings

You may re-program the functions of the pen's two-barrel buttons by selecting a command from the drop down menu for the designated Pen button.

When operating in Mouse Coordinate Mode, you can select from standard Mouse commands: "No Action", "Left Click", "Left Double Click", "Right Click", "Middle Click" or "Pen/Eraser" Toggle.

**Note:** Pen/Eraser toggle function only works on the supported graphics software or digital ink software.



## Pressure Test

The Pressure Test area allows you to adjust the Click Sensitivity, which corresponds to the width of your pen stroke lines based on the sensitivity of your applied hand pressure; A Lighter setting will create thinner lines, while a Heavier setting will create thicker lines. We suggest you take the time to adjust the Click Sensitivity to your ideal preference. There are four different colors you can select while testing the pressure sensitivity.

**Clear:** Tap on the **【Clear】** button to delete and refresh the Pressure Test area.

## Click Sensitivity

The Click Sensitivity corresponds to the width of your pen stroke lines based on the sensitivity of your applied hand pressure; A Lighter setting will create thinner lines, while a Heavier setting will create thicker lines. On the default setting, tapping with the pen tip is equivalent to a left click on a traditional mouse. Move the slider in the sensitivity bar to adjust the response of the pen tip.

## Default Button Setting

Tap on the **【Default Button Setting】** to recover the manufacturer settings.



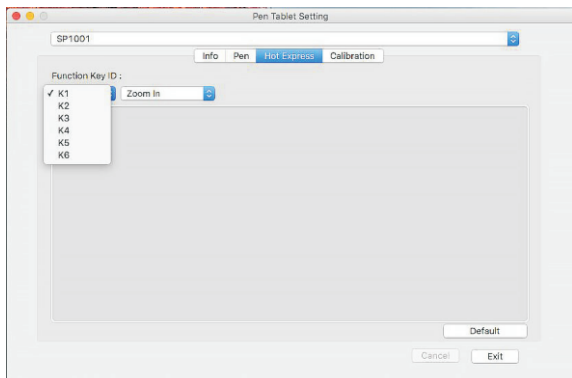
## HOT EXPRESS KEYS TAB

### Hot Express keys:

You may re-program the functions from the Hot Express Keys configuration page.

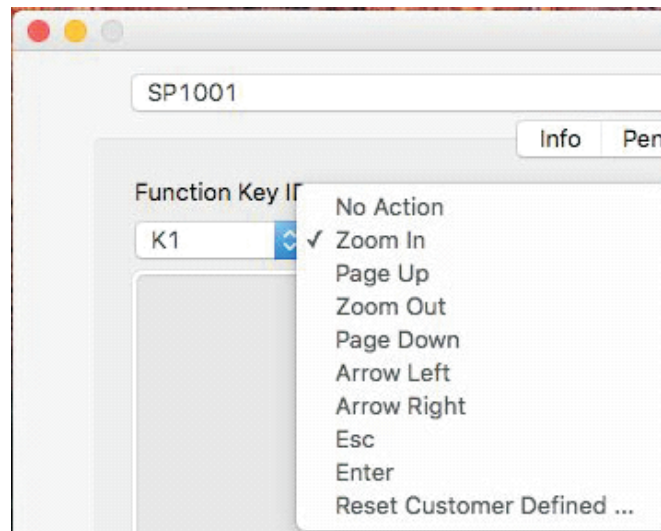
### Default Button Setting

Tap on the **Default** button to recover the original manufacturer settings.



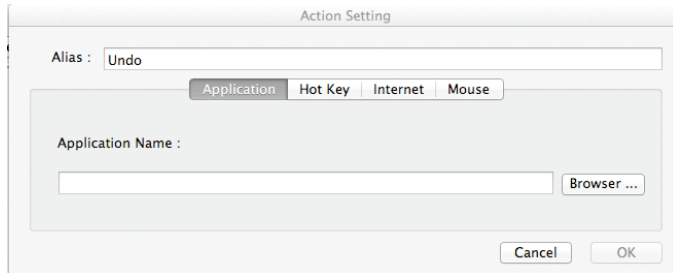
### Re-define Hot Express Keys

**Function Key Define:** Tap on the **【K1-K6】** button to select the function which you would like to re-define.

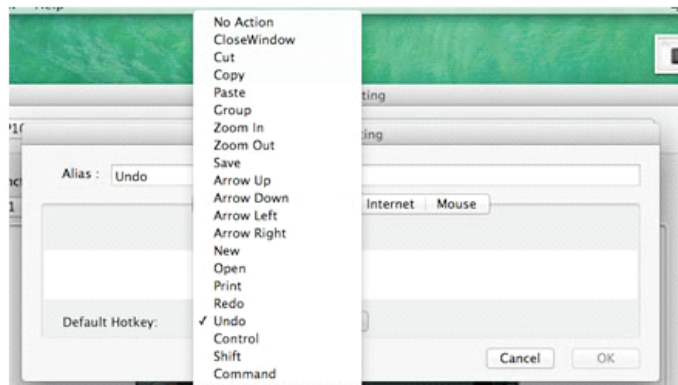


**Reset Customer Defined:** You can scroll down the **Reset Customer Defined** list for advanced re-define settings: "Application", "Hot-key", "Internet" and "Mouse" tabs.

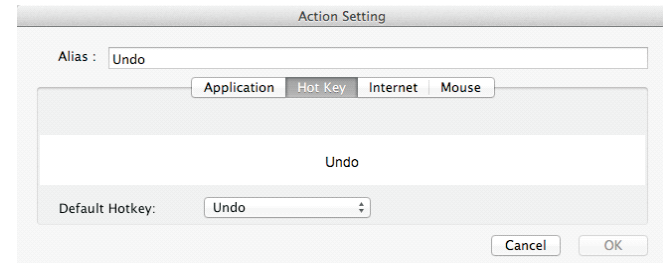
**Application:** Use the browser button to select a file or application.



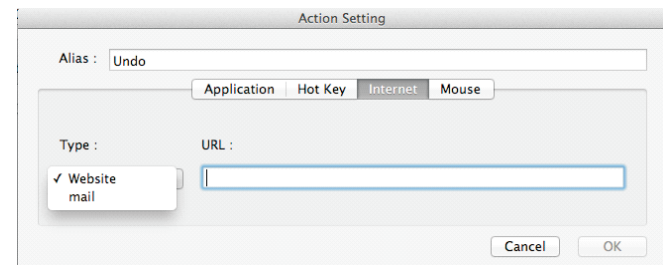
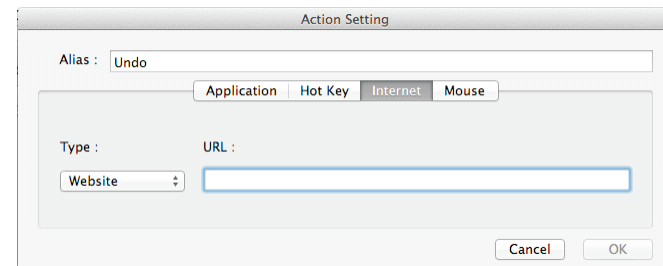
**Hot-key:** You can choose the common settings from the **Default Hotkey** drop-down menu.



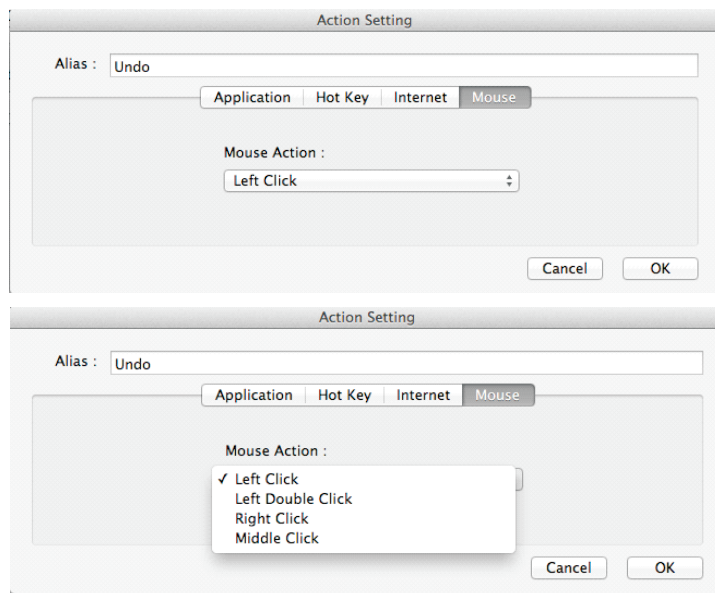
Enter a keystroke combination in the area below marked by the red frame, enter your desired keystroke combination to execute your chosen command from the Default Hotkey drop down menu.



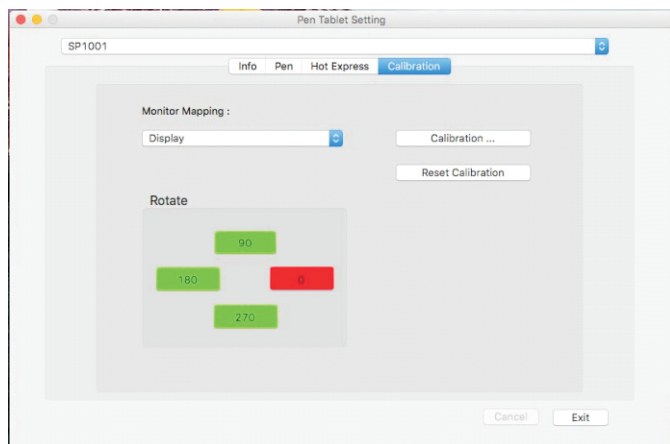
**Internet:** Enter the URL for quick access.



**Mouse:** Select mouse mode settings.



### THE CALIBRATION SETTINGS TAB



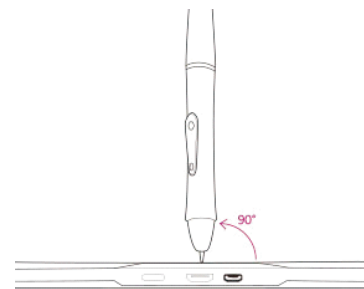
**Calibration:** Click "Calibration" to activate the calibration screen.

**Reset Calibration:** Return to the default settings.

**Rotate:** Select the degree of rotation that you would like to apply to the orientation of your Artist 10 screen.

**Monitor Parameter:** Adjust the brightness and contrast of your Artist 10. If you would like to restore to the original manufacturer settings, click "Monitor Default Setting".

→ **Notice:** When adjusting the calibration, hold the pen vertically at 90° on the calibration screen, and use the pen tip to click on the center of the crosshairs.



## IV.Question & Answer

### Q: How can I get the latest updated software?

**A: You can download the new driver from our website ([www.xp-pen.com](http://www.xp-pen.com)).**

- A. Uninstall your old driver: Click [Start] ► [All Programs] ► [TABLET] ► [Uninstall].
- B. Download the latest driver version in the download section and save it onto your hard disk.
- C. Unzip the file in a folder on your hard disk (with Windows built-in unzip utility or a program like WinZip for instance).
- D. Double-click the Setup.exe in the folder where you unzipped the file.

### Q: My Artist 10 does not work. What can I do?

**A: Follow these steps as shown below:**

- A. Remove the USB and HDMI plug from the computer.
- B. Un-install the Artist 10 driver from the system.
- C. Re-connect your Artist 10 with the USB and HDMI cables to the computer.
- D. You can download the latest version of the driver directly from our website.
- E. After installing the new driver version, the system will require you to restart your computer.
- F. After you restart your computer, on the bottom right of the screen, you should see the Artist 10 icon (🖊️) .
  - a.If you can't find the Artist 10 icon (🖊️) on the bottom right of the screen, it means the driver has failed in startup. This may be caused by compatibility issues.
  - b.Or check [My Computer] ► [Properties] ► [Hardware] ► [Device Manager], if there is an exclamation mark that is found, it means that the Artist 10 installed driver is incompatible with the Windows system. If you have this problem, can contact us for assistance.
- G. By clicking the Artist 10 icon (🖊️) on the bottom right of the screen, you can test the pressure sensitivity to see whether the pen pressure function works or not.

**If you do not have pen pressure, it means the pen might be faulty and you should contact us for a solution.**