



# Graphic Pen Tablet

## Star G540 / G430

English, Русский язык, 日本語, 中文,  
Deutsch, 한국어, Español, Français

For Gameosu!&Drawing

QUICK  
START  
GUIDE

Windows 10/8/7/Vista/XP Mac OS X 10.6.8 or above



XP-Pen

Any questions, please contact us

Web site: [www.xp-pen.com](http://www.xp-pen.com)



# User Manual

Thank you for purchasing the XP-Pen tablet. Our product quick guide currently supports English, Russian, Japanese, German, Korean, Chinese, Spanish, and French. We apologize if your preferred language is not supported.

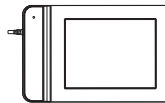
## Attention:

The XP-Pen Star G540/G430 is designed for OSU! Gameplay, Drawing, Painting, Sketching, etc.

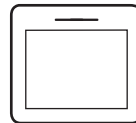
You DO NOT need to install any drivers or softwares to use the G540/G430 tablet for OSU! Gameplay.

However, you must install the G540/G430 driver for Drawing, Painting, and Sketching. You can download the latest driver and manual from the [www.xp-pen.com](http://www.xp-pen.com) "Support" page.

## Product and Accessories:



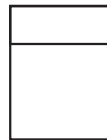
G430 Tablet



G540 Tablet



Battery-free Stylus



Nibs Bag

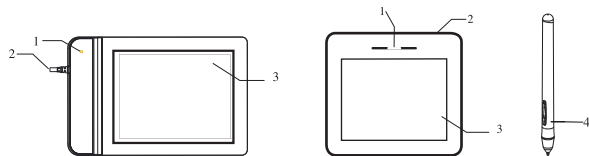


Quick Manual



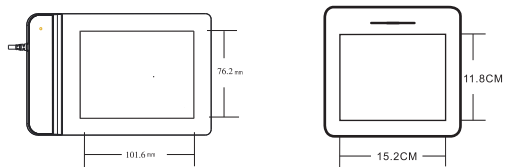
10 Replacement Nibs

## Product Overview:

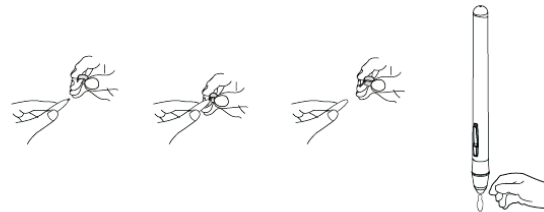


- (1) Status indicator light
- (2) USB Cable
- (3) Working area
- (4) Stylus

## Working Area:

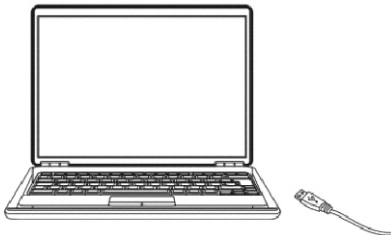


## Replacing the Stylus' pen tip:



## Plug and Play for Game OSU:

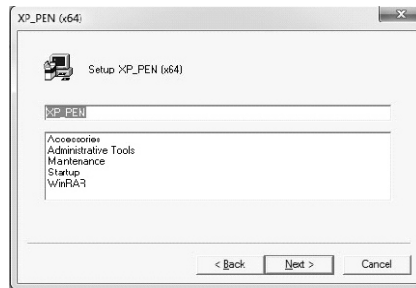
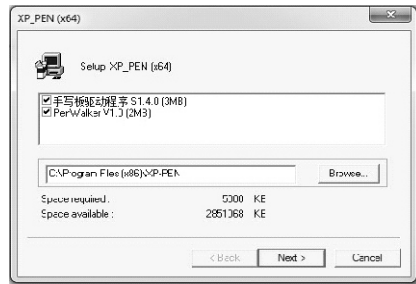
When plugging the XP-Pen G540/G430 into your computer, your operating system will automatically identify the hardware and Stylus Pen for instant use without any additional setup.

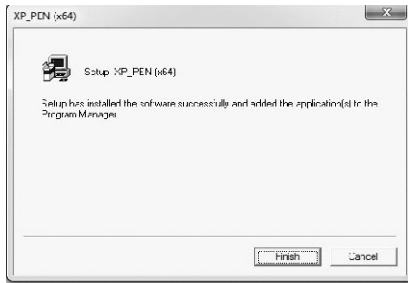
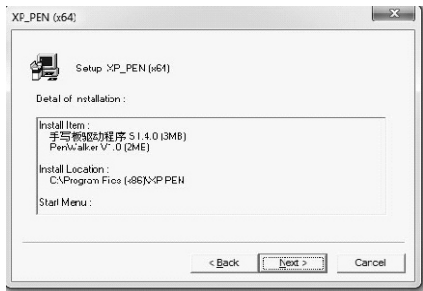



## Driver installation for Drawing, Painting, and Sketching:

### Windows driver installation

- (1) Please go to the XP-Pen web site to download the latest driver.  
It is located at [www.xp-pen.com](http://www.xp-pen.com) under the “Support” page.
- (2) Plug the XP-Pen G540/G430 into your computer.
- (3) Unzip then explore the file and execute “setup.exe” or “install.exe” to install the driver.

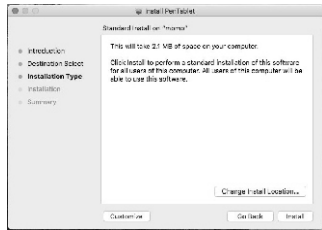


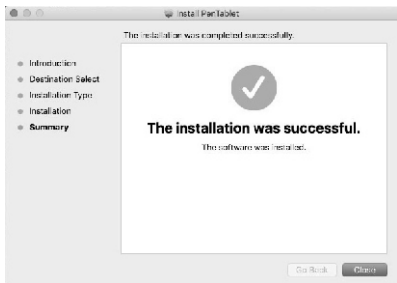
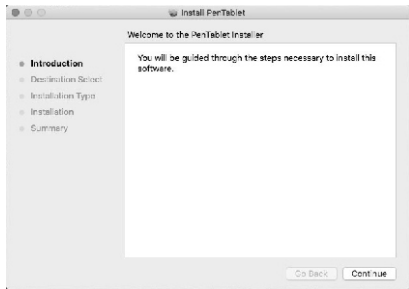


- (4) When the driver installation is completed, reboot your computer. At right bottom of your computer desktop, the small icon “” should appear indicating that the graphic tablet has succeeded in installing and is ready to be used.

### Mac driver installation:

- (1) Please go to the XP-Pen web site to download the latest driver from the [www.xp-pen.com](http://www.xp-pen.com) “Support” page.
- (2) Plug the XP-Pen G540/G430 into your computer.
- (3) Unzip then explore the file and execute “PenTabletDriver.pkg” to install the driver..





- (4) When the driver installation is completed, reboot your computer. At right top of your computer desktop, the tablet small icon should appear indicating the graphic tablet has succeed in installing and is ready to be used.



If you have any questions, please contact us at:

Skype: XP-Pen

Web: [www.xp-pen.com](http://www.xp-pen.com)

Email: [service@xp-pen.com](mailto:service@xp-pen.com)