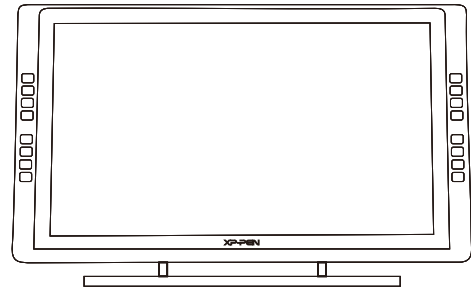




Graphic Pen Display

Artist 22E Pro Manual

Windows 10,8,7 and Mac 10.10 or above



XP-PEN

Website: www.xp-pen.com

Mail: service@xp-pen.com

Please contact us with any questions



Artist 22E Pro User Manual

Safety Precautions

This manual uses the following symbols to ensure that the XP-PEN Tablet is used correctly and safely. Be sure to read and observe the Safety Precautions.



Do not use this product in a control system area that requires a high degree of safety and reliability.

In such a system, this product could negatively affect other electronic devices and



Turn the power off in areas where use of electronic devices is prohibited.

Turn the power off your tablet when onboard an aircraft or in any other location where use of electronic devices is prohibited, otherwise it may negatively affect other electronic devices in the area.



Keep the product away from infants and young children.

Accessories to this gadget may present a choking hazard to small children. Keep all accessories away from infants and young children.



CAUTION

Do not place this product on unstable surfaces.

Avoid placing this product on unstable, tilted surfaces or any locations exposed to excessive vibrations. This may cause the tablet to fall or impact surfaces which can

Do not place heavy objects on top of this product.

Do not place heavy objects on the product. Do not step on, or place your body weight on this product as this may cause damage.



Avoid extreme high or low-temperature exposure to the XP-Pen tablet.

Do not store this product in areas that drop below 5°C or above 40°C. Avoid locations with excessive temperature fluctuations. This may result in damage to the product and



Do not disassemble

Do not disassemble or modify this product. Doing so may expose you to heat, fire,



Do not use alcohol for cleaning

Never use alcohol, thinner, benzene or other mineral solvents that may discolor and cause deterioration to the product.



Do not expose to water

Be cautious of water and all liquids that may be near the tablet. Exposure to water or



CAUTION

Avoid placing metallic objects and especially magnetic objects on the tablet.

Placing metallic and/or magnetic objects on this product during operation may cause malfunction or permanent damage.



Do not strike the pen against hard objects.

Striking the pen against hard objects can cause damage to the pen.



Avoid gripping the pen too tightly, and DO NOT use excessive weight/pressure on the Express Key button and pen.

The stylus pen is a high-precision instrument. Avoid pressing too tightly on the Express Key button, and keep any objects from covering the pen to avoid potential damage. Keep the pen away from areas of high dust, contaminants, or any particulate

Limitation of Liability

- XP-Pen shall in no event be liable for damages resulting from fires or earthquakes, including those caused by third parties and those arising from user misuse, abuse or neglect.
- XP-Pen shall in no event be liable for incidental damages- including but not limited to loss of business income, interruption of business activities, corruption or loss of data – that arise from use or failure to use this product correctly.
- XP-Pen shall in no event be liable for damage resulting from uses not documented in this manual.
- XP-Pen shall in no event be liable for damages or malfunction arising from the connection to other devices or use of third party software.

Artist 22E Pro User Manual

Thank you for purchasing the XP-Pen tablet. Our product user manual currently supports English, Russian, Japanese, German, Korean, Chinese, Italian, Spanish, and French. We apologize if your preferred language is not supported.

Contents

I. Product Overview	2
Overview.....	2
Active area.....	2
II. Stylus	3
Overview.....	3
Pen tip replacement.....	4
III. Connect the Artist 22E Pro	5
IV. Driver Installation	5
Windows.....	5
Mac.....	7
V. Driver Settings UI	10
Windows.....	10
Mac.....	15
VI. Driver Uninstallment	18
Windows.....	18
Mac.....	18
VII. FAQ	19

{ I.Product Overview }

Overview



Image 1-1: Artist 22E Pro Overview

- (1). Display/Working area
- (2). Express key
- (3). Power indicator light
 - a. On, Blue: The Artist 22E Pro is connected to your computer and powered on.
 - b. On, Red: The Artist 22E Pro is powered on, but not connected to a computer.
 - c. Off: The Artist 22E Pro is powered off.
- (4). Power button
- (5). Menu button
- (6). + button
- (7). - button
- (8). Display auto adjust button
- (9). USB port
- (10). Power jack
- (11). HDMI port
- (12). DVI port
- (13). VGA port
- (14). Stand adjustment lever

Active area

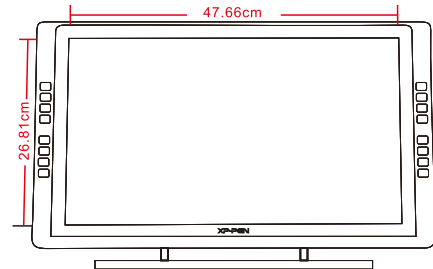


Image 1-2: Active area

{ II. Stylus }

Overview

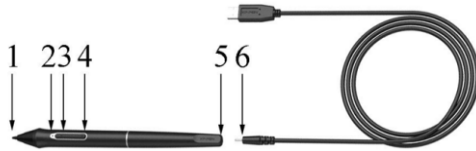


Image 2-1: Artist 22E Pro Stylus

- (1). Pen tip
- (2). Power indicator
 - a. On, red: Low battery.
 - b. On, green: Battery is charging.
 - c. Off: Battery is fully charged.
- (3). Barrel button 2
- (4). Barrel button 1
- (5). Charger port

NOTES:

Barrel button functions can be customized in the tablet's driver settings.

Pen Case and Pen clip

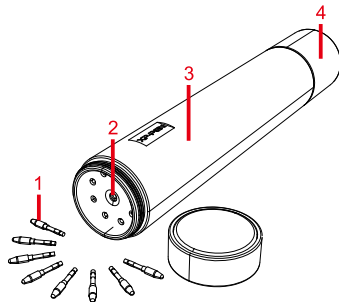


Image 2-2: Pen case & clips

- (1). Pen clip
- (2). Pen clip hole
- (3). Pen case

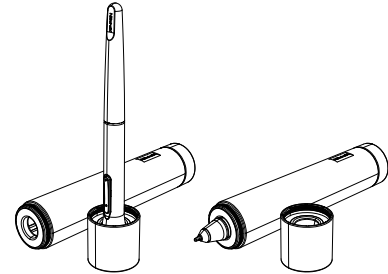


Image 2-3: Pen stand

Pen tip replacement

- (1). Twist the pen stand's top cover counter-clockwise to separate it from the pen stand. Insert the stylus tip into the hole in its center. Tilt the stylus slightly so that the tip catches on the edge of the hole, then pull the stylus and pen stand apart to remove the pen tip.
- (2). Take a new pen tip from the inside of the pen stand.

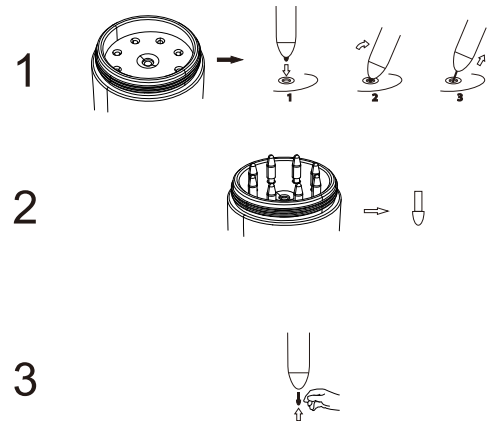


Image 2-4: Pen tip replacement

{ III. Connect the Artist 22E Pro }

1. Connect the Artist 22E Pro to your computer via the included USB cord.
2. Connect the Artist 22E Pro's power cord. Plug the cord into the included adapter, then into a wall outlet.
3. Connect the Artist 22E Pro to your computer via the included HDMI cord.



Image 3-1: Artist 22E Pro ports
(1.VGA; 2.DVI; 3.HDMI; 4. Power jack; 5.USB)

{ IV. Driver Installation }

Supported operating systems:

Windows 10, 8, and 7

NOTES:

- (1). Disable any antivirus or firewall software and close any non-essential background software before beginning the installation. Some software, such as OneDrive and Dropbox, may monopolize important files and prevent a successful installation. On a Windows operated computer, check the system tray on the bottom-right of the screen and close any software unrelated to your computer hardware.
- (2). Uninstall any existing tablet software before attempting to install the Artist 22E Pro driver. Other tablet drivers will conflict with the Artist 22E Pro driver or prevent installation entirely.
- (3). You can download the latest driver version from the XP-Pen website (www.xp-pen.com) and be sure to extract the ".zip" file contents before running ".exe" or ".pkg."

Windows

- (1). Connect the Artist 22E Pro to your computer using the included HDMI/VGA, USB & Power cords. Turn on the tablet.
- (2). Please download the Artist 22E Pro's latest driver from the support section of our website, www.xp-pen.com
- (3). Extra the ".zip" file contents before running ".exe"
- (4). After a successful installation, the driver's icon (🖱️) will appear in your system tray and on your desktop. If the icon is not present, uninstall the driver, reboot, and repeat step 2.
- (5). (Recommended) Open [Control Panel] > [Display], then set Change the size of text, apps, and other items to 100%.

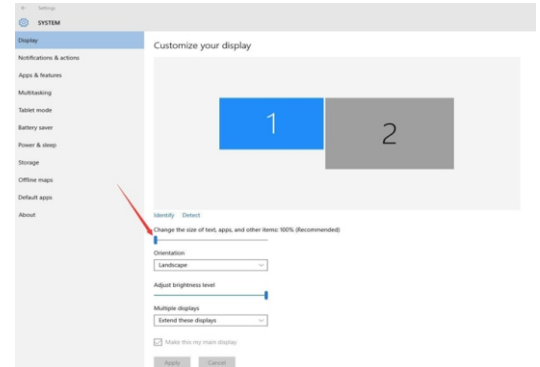


Image 4-1: Display setting

- (6). In [Control Panel] > [Display], change your dual monitor settings to Extend mode/Extend these displays.
- (7). In Extend mode, set your Artist 22E Pro to monitor 2 and choose a resolution of 1920x1080.
- (8). In Duplicate these displays mode, set both of your monitors' resolutions to 1920x1080.

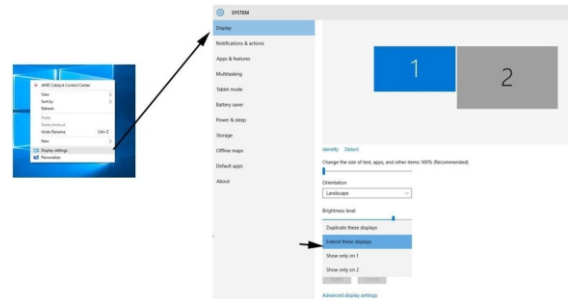


Image 4-2: Extend mode

- (9). Apply and exit.
- (10). Double-click the driver's system tray icon to open your tablet settings, then set your Artist 22E Pro to Monitor 2 under "Current screen." Apply and exit.

Note:
To use Paint Tool Sai (SAI) with the Artist 22E Pro, please open your computer's Display setting and set "Size of text, apps, etc" to 100%.

Mac

- (1). Connect the Artist 22E Pro to your computer using the included HDMI/VGA, USB& Power cords. Turn on the tablet.
- (2). Please download the Artist 22E Pro's latest driver from the support section of our website, www.xp-pen.com
- (3). Extra the ".zip" file contents before running ".pkg".

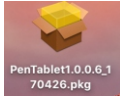


Image 4-3: Mac driver

- (4). If you run into the error message below, please complete the following steps.

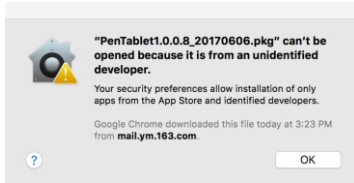


Image 4-4: unidentified developer

- a. Open "System Preferences," then "Security & Privacy."

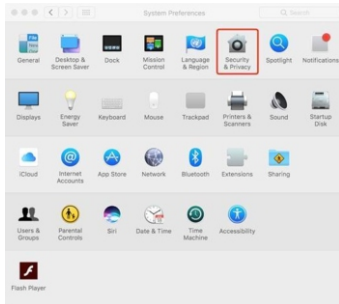


Image 4-5: Security & Privacy

- b. Click "Open Anyway" button.

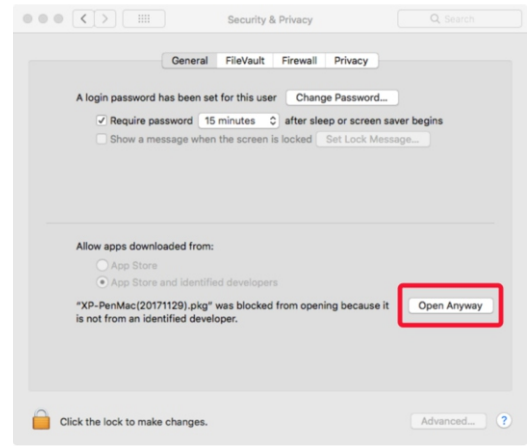


Image 4-6: Lock

- c. Input your user name and password, then click "Unlock."

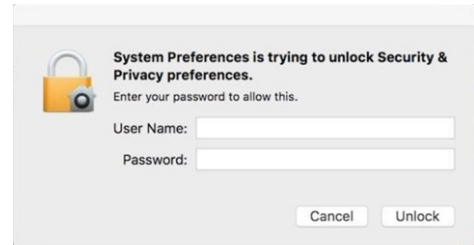


Image 4-7: Password

- (5). Open [System Preferences] > [Display]. In the Display tab, set your resolution to Default for display.

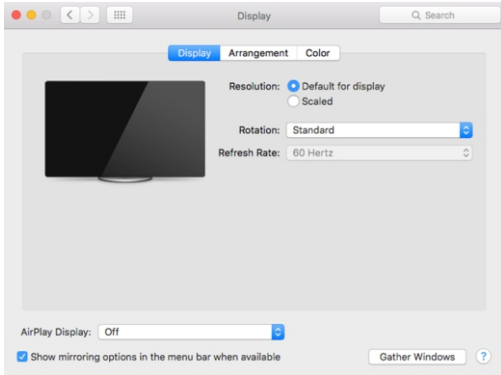


Image 4-8: Display

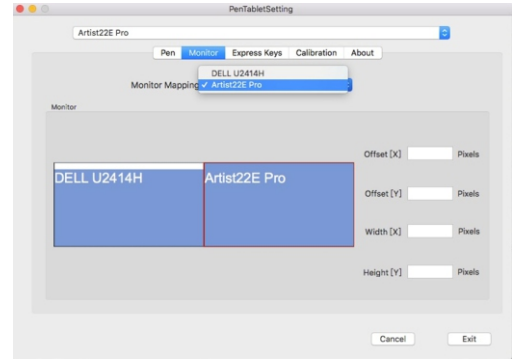


Image 4-10: Monitor

{ V. Driver Settings UI }

Notes:

- (a). The Artist 22E Pro's express keys are designed to work with US English keyboards. Keys may not function correctly with the other keyboard languages.
- (b). By default, the Artist 22E Pro express keys are mapped to standard Photoshop keyboard shortcuts. Keys can be customized to function efficiently in other software.

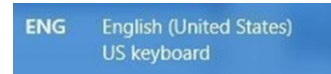


Image 5-1: Keyboard

Windows

The Artist 22E Pro's driver settings can be opened in two ways:
 Double-click the driver's icon (XP-PEN) in system tray or your desktop.

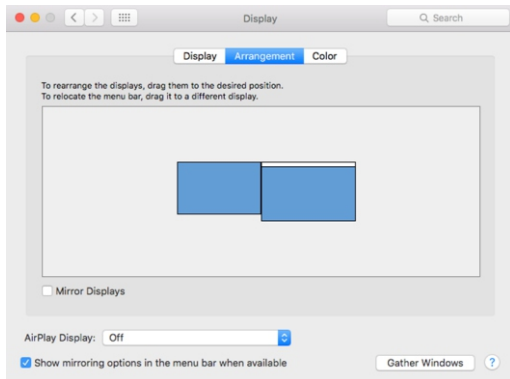


Image 4-9: Arrangement

- (6). In the Arrangement tab, you may choose to Mirror Displays. With Mirror Displays enabled, both monitors' resolutions should be set to 1920x1080.
 - (6.1). Open [Finder] > [Applications] > [Touch Tablet] > [Pen Tablet Setting].
 - (6.2). In the Monitor tab, set Monitor Mapping to Color LCD.
- (7). With Mirror Displays disabled, set your Artist 22E Pro's resolution to 1920x1080.
 - (7.1). Open [Finder] > [Applications] > [Touch Tablet] > [Pen Tablet Setting].
 - (7.2). In the Monitor tab, set Monitor Mapping to Artist 22E Pro.

Driver UI

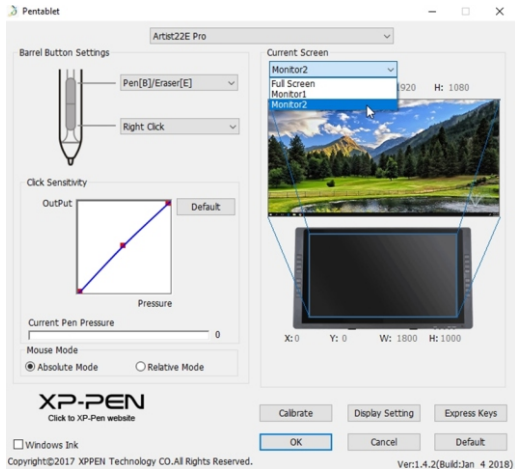


Image 5-2: UI

1.1. Barrel Button Settings

You may customize the functions of your tablet pen's barrel buttons here. Use the "Function Key" option to program custom keystrokes.

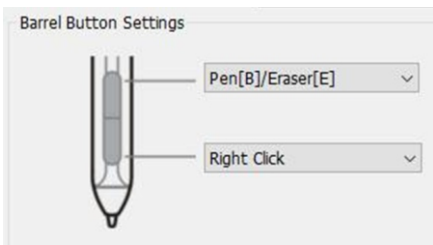


Image 5-3: Pen Functions Setting

Note:

Pen/Eraser Toggle

With the stylus in range of the Artist 22E Pro's working area, press the assigned barrel button to toggle between pen and eraser modes in compatible drawing software. The current mode will briefly be displayed on your monitor.

1.2. Click Sensitivity & Current Pen Pressure

You can adjust pen pressure to "Output" or "Press" sensitivity on here.

Current Pen Pressure shows the current pressure level being exerted on your tablet and can be used to test pen pressure.

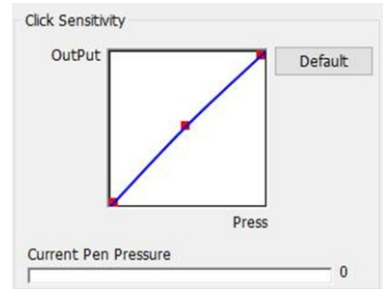


Image 5-4: Click Sensitivity & Current Pen Pressure

1.3. Current Screen

The Artist 22E Pro may be configured for use with single or dual monitors.

Generally, this should be set to "Monitor1" or "Monitor 2."

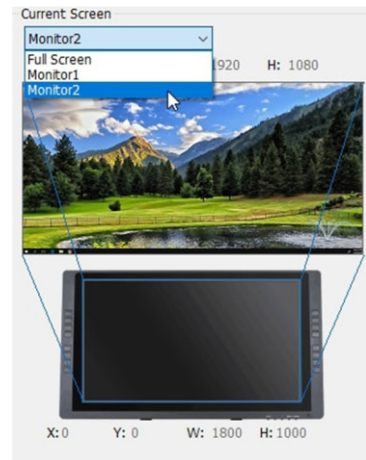


Image 5-5: Current Screen

1.4. Mouse Mode

Absolute (Pen) Mode: Standard tablet mode; Each point of the tablet's work area corresponds to an absolute point on your computer display.
 Relative (Mouse) Mode: Mouse mode; The tablet's work area does not correspond to absolute points on your computer display and your pen works as a standard mouse.

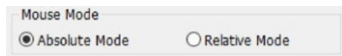


Image 5-6: Mouse Mode

1.5. Windows Ink

Windows Ink capability can be toggled on and off here. Enabling this will allow support for Windows Ink and applications that run using Windows Ink.



Image 5-7: Windows Ink

1.6. Calibration

The Calibration tab allows you to set up calibration for your tablet.

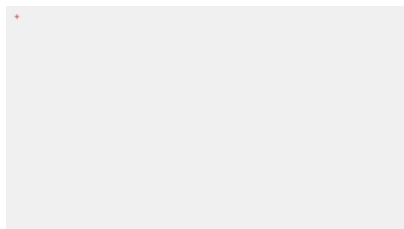


Image 5-8: Calibration

1.7. Display Setting

Rotate: You may rotate the Artist 22E Pro's display in this tab.

Note:

The Artist 22E Pro cannot adjust "Color temperature" and "User" in the display settings. This can be done through your video card settings."

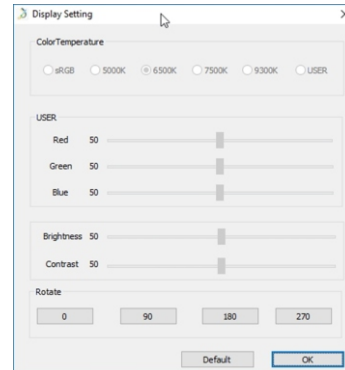


Image5-9: Display Setting

1.8. Express Keys Setting

In this tab, you may edit the functions of the Artist 22E Pro's shortcut keys. Use the "Definition" option to program custom keystrokes.
 Disable express keys: When you enable it, all of the express keys function will be disabled.
 Hide Hints: When you enable it, and click any express keys the message will not popup on the bottom of screen.

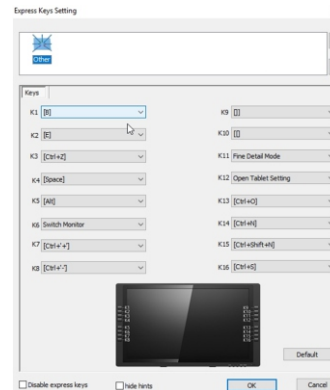


Image 5-10: Display Setting

1.9. XP-Pen Logo

If a driver update is available, you will see a blue arrow here (🔵). Click the arrow to update your driver.
Click our logo to visit our website.



Image 5-11: XP-Pen logo

Mac

To open the Artist 22E Pro's driver settings, open Finder > Applications > PenTabletSetting.

Driver UI



Image 5-12: Tablet Setting

1.1. Pen

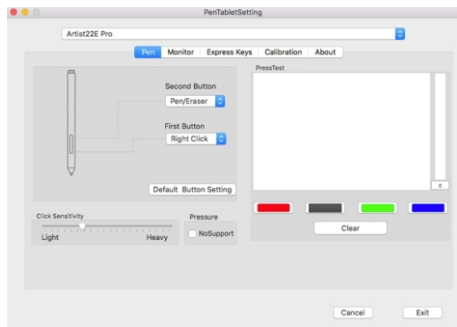


Image 5-13: Mac UI

Note:

Pen/Eraser Toggle

With the stylus in range of the Artist 22E Pro's working area, press the assigned barrel button to toggle between pen and eraser modes in compatible drawing software.

In this tab, you may customize the functions of your stylus' barrel buttons, adjust pressure sensitivity, and test your pen pressure.

Pressure No Support function can disable pen pressure when drawing Click "Default Button

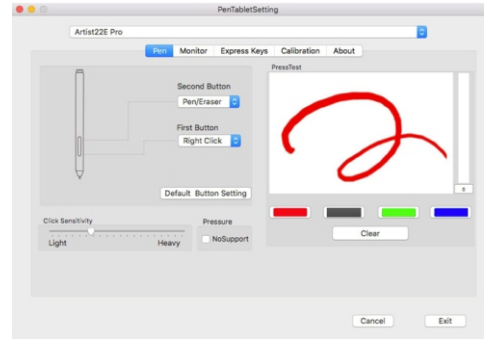


Image 5-14: Pressure Test

1.2. Monitor

The "Monitor" tab allows you to configure your tablet for use with Moniro1 or Monitor2.

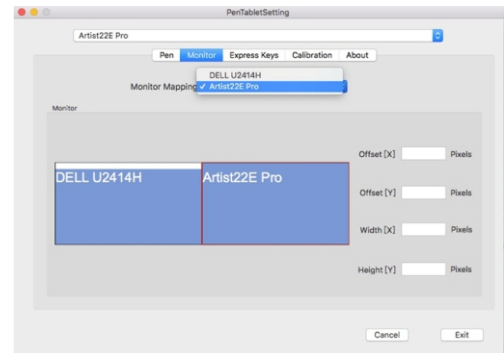


Image 5-15: Monitor

1.3. Express Keys

In the Express Keys tab, you may choose your preferred functions for the Artist 22E Pro's shortcut keys. Use the "Reset Customer Defined" option to program custom keystrokes.

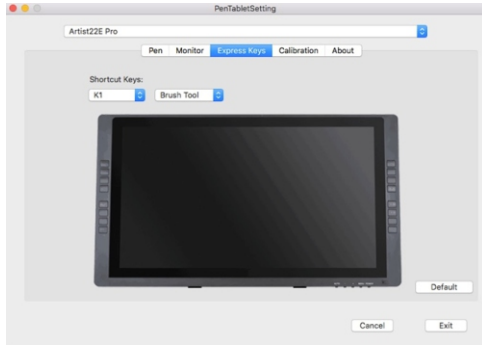


Image 5-16: Express keys

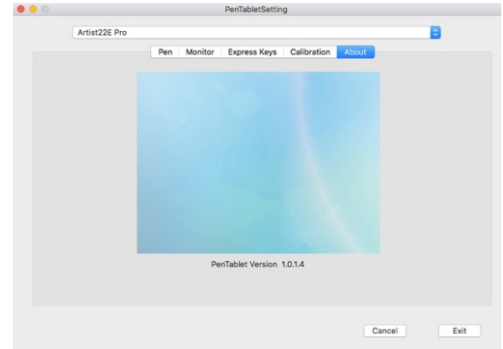


Image 5-18: About

1.4. Calibration

The Calibration tab allows you to calibrate your tablet, map your monitor, or rotate your display.

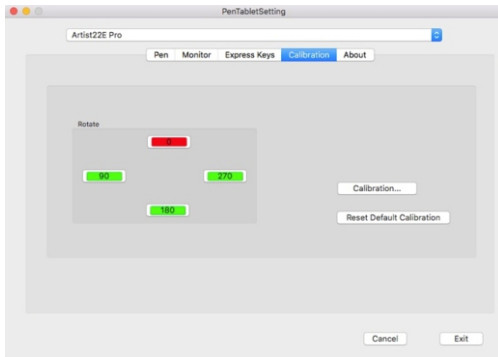


Image 5-17: Calibration

1.5. About

This tab displays the current version of your driver software.

{ VI. Driver Uninstallment }

Windows

In the Start menu, open [Settings] → [Apps & features]. Find "Pentablet" and click "Uninstall." Follow the on-screen instructions.

Mac

Open [Finder] → [Application] → [Pen Tablet], then click "Uninstall Pen Tablet" and follow the on-

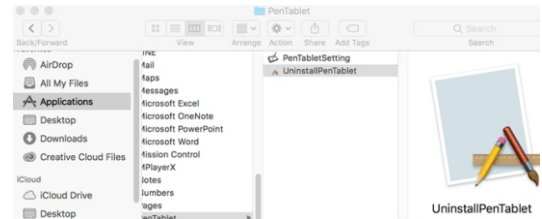


Image 6-1: Mac uninstall

NOTE :

When attempting to reinstall the Artist 22E Pro driver, be sure to reboot your computer after the uninstallment is complete.

{ VII. FAQ }

1. Where can I download the latest Artist 22E Pro driver?

- a. Latest driver releases can be downloaded from our website (www.xp-pen.com).

2. I can't use the stylus to control the cursor.

- a. Please turn on your Artist 22E Pro and make sure you can see the display.
- b. Please install the driver again then find the tablet icon in the system tray or desktop.
- c. Open it then test the pen pressure gauge inside.
- d. If you can't test the pen pressure, please uninstall the driver and reboot. Make sure your computer login account has Administrator authority.
- e. The Artist 22E Pro supports plug and play, please test your stylus pens function before reinstalling the driver. If you have control, please disable your antivirus then go to the XP-Pen website to download the latest driver.
- g. When the download is complete, please unzip and extract the contents of the folder to run the .exe or .pkg installation file.
- h. Open the tablet setting again then make sure can you use the pen pressure on it

3. How do I know that the Artist 22E Pro driver installed successfully?

- a. After installing the driver, the Artist 22E Pro's driver icon should be visible in your system tray on the bottom-right of your screen (Windows OS) and desktop.
Pen input will control the cursor and pressure sensitivity will be functional in the driver.

4. Why can't I use the pen pressure on the drawing software?

- a. Please make sure the drawing software can support pen pressure
- b. Make sure you have the latest driver installed.
- c. Open the tablet setting and make sure you can test the pen pressure in it
- d. Enable the "windows ink" function then click the ok button to exit. Open the drawing software again and test your pen pressure.

If you have any questions, please contact us at:

Skype: XP-Pen

Web: www.xp-pen.com

Email: service@xp-pen.com