

Star 05 User Manual

Contents

- I.** Product Overview
 - Overview
 - Working area
- II.** Stylus
 - Overview
 - Pen tip replacement
- III.** Connecting the Star 05
 - Wireless USB
 - Corded USB
 - Sleep mode
- IV.** Driver Installation
 - Windows
 - Mac
- V.** Driver Settings UI
 - Windows
 - Mac
- VI.** Driver Uninstallation
 - Windows
 - Mac
- VII.** FAQ

Thank you for purchasing the XP-Pen tablet. Our product user manual currently supports English, Russian, Japanese, German, Korean, Chinese, Italian, Spanish, and French. We apologize if your preferred language is not supported.

I. Product Overview

Overview

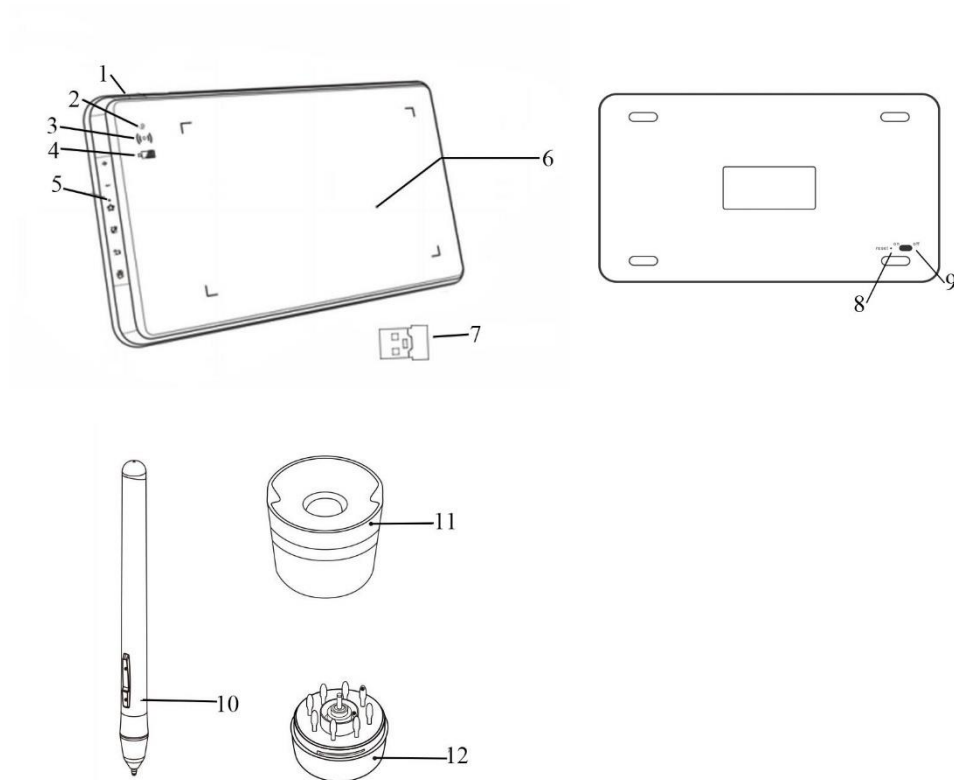


Image 1-1: Overview

- (1). USB plug in
- (2). Status indicator light
 - a. White, blinking: Stylus is in range, but not touching the working area.
 - b. White, solid: Stylus is touching the working area.
 - c. No light: Stylus is out of detection range.
- (3). Wireless indicator light
 - a. Green: Tablet is connected via wireless USB.
 - b. Off: Tablet is not connected via wireless USB.

- (4). Battery indicator light
 - a. Blue: Tablet is connected and charging via corded USB.
 - b. Red: Tablet battery is low.
 - c. Green: Tablet is sufficiently charged.
- (5). Touch keys
- (6). Working area
- (7). USB receiver
- (8). Reset button
- (9). Power on/off button
- (10). Stylus
- (11). Pen Stand
- (12). Pen tip replacements (stored inside the pen stand)

Active area

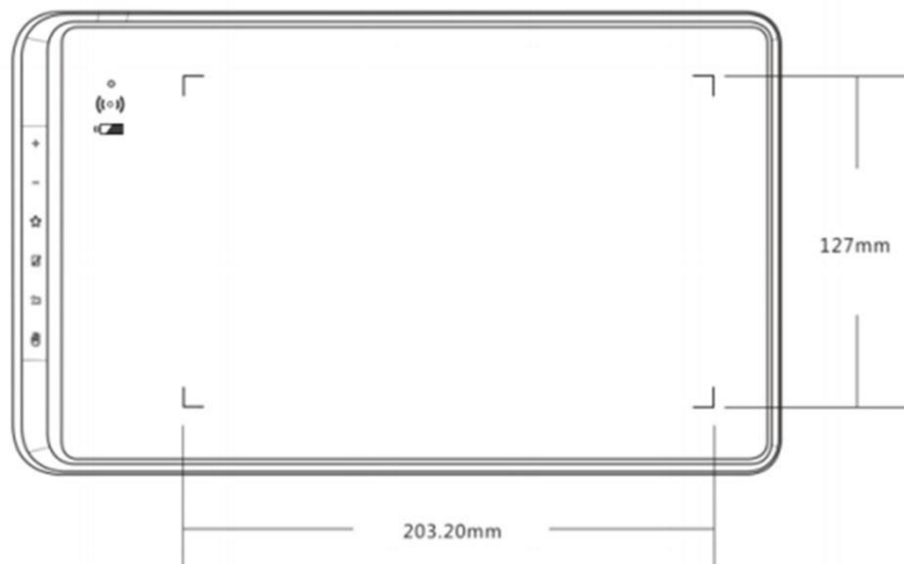


Image 1-2: Active area

II. Stylus

Overview

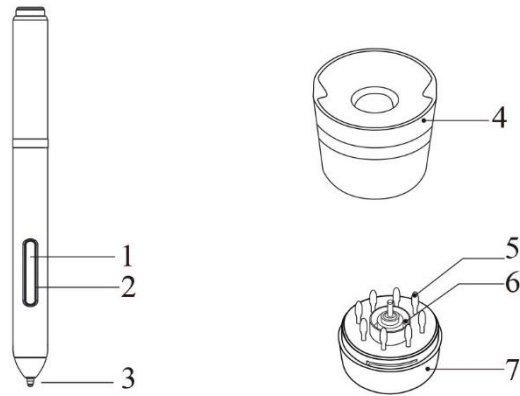


Image 2-1: Stylus

- (1). Barrel button 2
- (2). Barrel button 1
- (3). Pen tip
- (4). Pen stand top
- (5). Replacement pen tips
- (6). Pen clip
- (7). Pen stand bottom

NOTES:

- a. Barrel button functions can be customized in the tablet's driver settings.**
- b. Stylus does not use a battery or require charging.**

Pen tip replacement

- (1). Hold the upper half of the pen stand and twist counterclockwise to remove it.
- (2). Remove the pen clip located in the center of the lower pen stand.
- (3). Use the pen clip to grip the pen tip and pull it out of the stylus.
- (4). Push the new pen tip into the stylus.

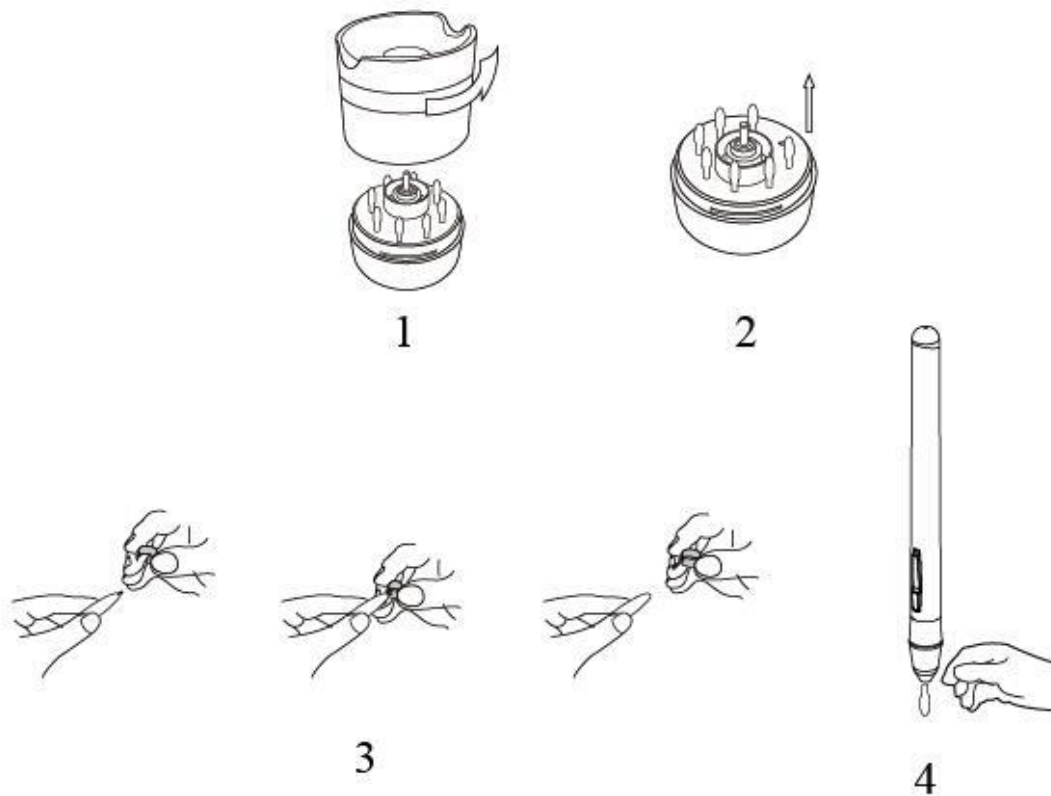


Image 2-2: Pen tip replacement

III. Connecting the Star 05

Wireless USB

- (1). Insert the included USB wireless receiver into your computer's USB port.
- (2). Use a toothpick, needle, or other small object to press the reset button on the back of the Star 05.
- (3). While continuing to press the reset button, slide the on/off switch to the right to turn on the tablet.
- (4). If successful, the Star 05's green wireless indicator light will light up and remain on. If the wireless indicator light does not light up, repeat steps 2 and 3.

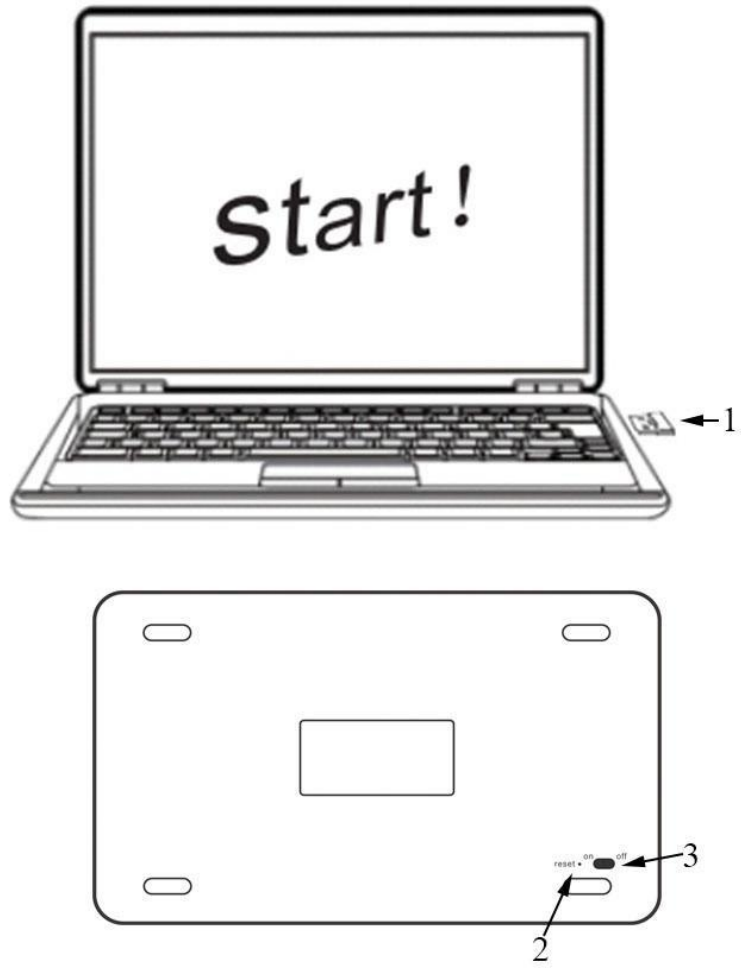


Image 3-1: Wireless USB

Corded USB

- (1). Connect the Star 05 to your computer with the included USB cable.
- (2). Switch the tablet on.



Image 3-2: USB

Sleep mode

When connected wirelessly, the Star 05 will automatically enter sleep mode after being idle for 30 minutes. The tablet can be woken up two ways:

- (1). Hold the “**Hand**” touch key for 3 to 5 seconds.

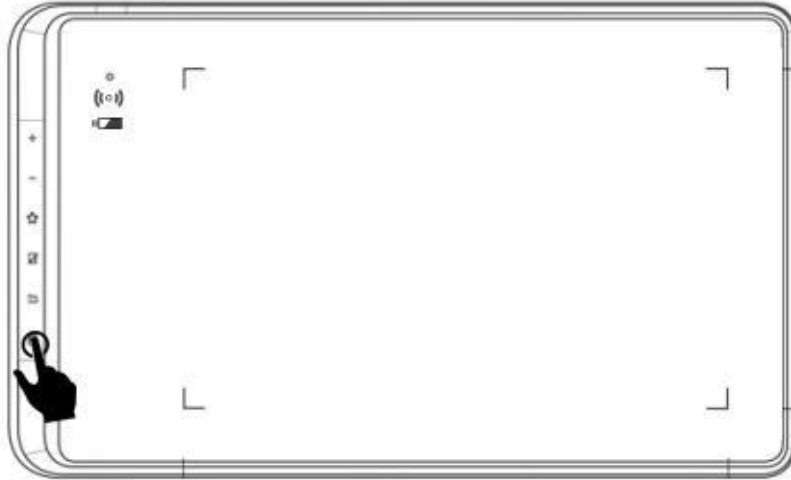


Image3-3: Sleep mode

(2). Turn the tablet off and back on with the power switch on the back.

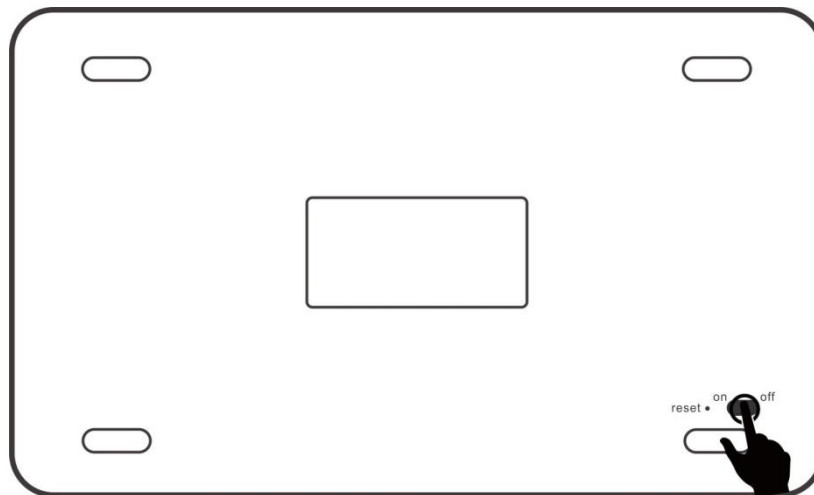


Image3-4: Sleep mode-1

IV. Driver Installation

Supported operating systems:


Windows 10, 8 or 7

Mac OS X 10.10 or above

NOTES :

- (1). **Disable any antivirus or firewall software and close any non-essential background software before beginning the installation. Some software, such as OneDrive and Dropbox, may monopolize important files and prevent a successful installation. On Windows computers, check the system tray on the bottom-right of the screen and close any software unrelated to your computer hardware.**
- (2). **Uninstall any existing tablet software before attempting to install the Star 05 driver. Other tablet drivers will conflict with the Star 05 driver or prevent installation entirely.**
- (3). **You can download the latest driver version from the XP-Pen website (www.xp-pen.com). If you choose to download the driver from the website, be sure to extract the .zip file contents before running “.exe” or “.pkg.”**

Windows

- (1). Connect the Star 05 to your computer with the included USB cable or USB receiver.
- (2). Download the Star 05's latest driver from the **support** section of our website, www.xp-pen.com
- (3). After a successful installation, the driver's icon () will appear in your system tray and on your desktop. If the icon is not present, uninstall the driver, reboot, and repeat step 2.

Mac

- (1). Connect the Star 05 to your computer with the included USB cable or USB receiver.
- (2). Download the Star 05's latest driver from the **support** section of our website: www.xp-pen.com
- (3). Extract the “.zip” file contents before running “.pkg”.



Image 4-1: Mac driver

- (4). If you run into the error message below, please go to “System Preferences” then “Security & Privacy” to unlock it.

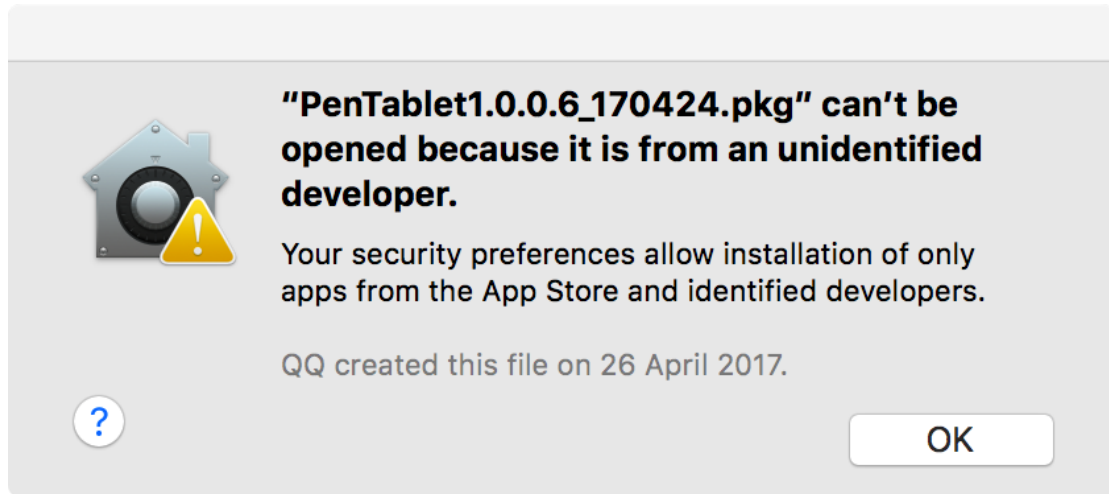


Image 4-2: Unidentified developer

- a. Open "System Preferences," then "Security & Privacy".

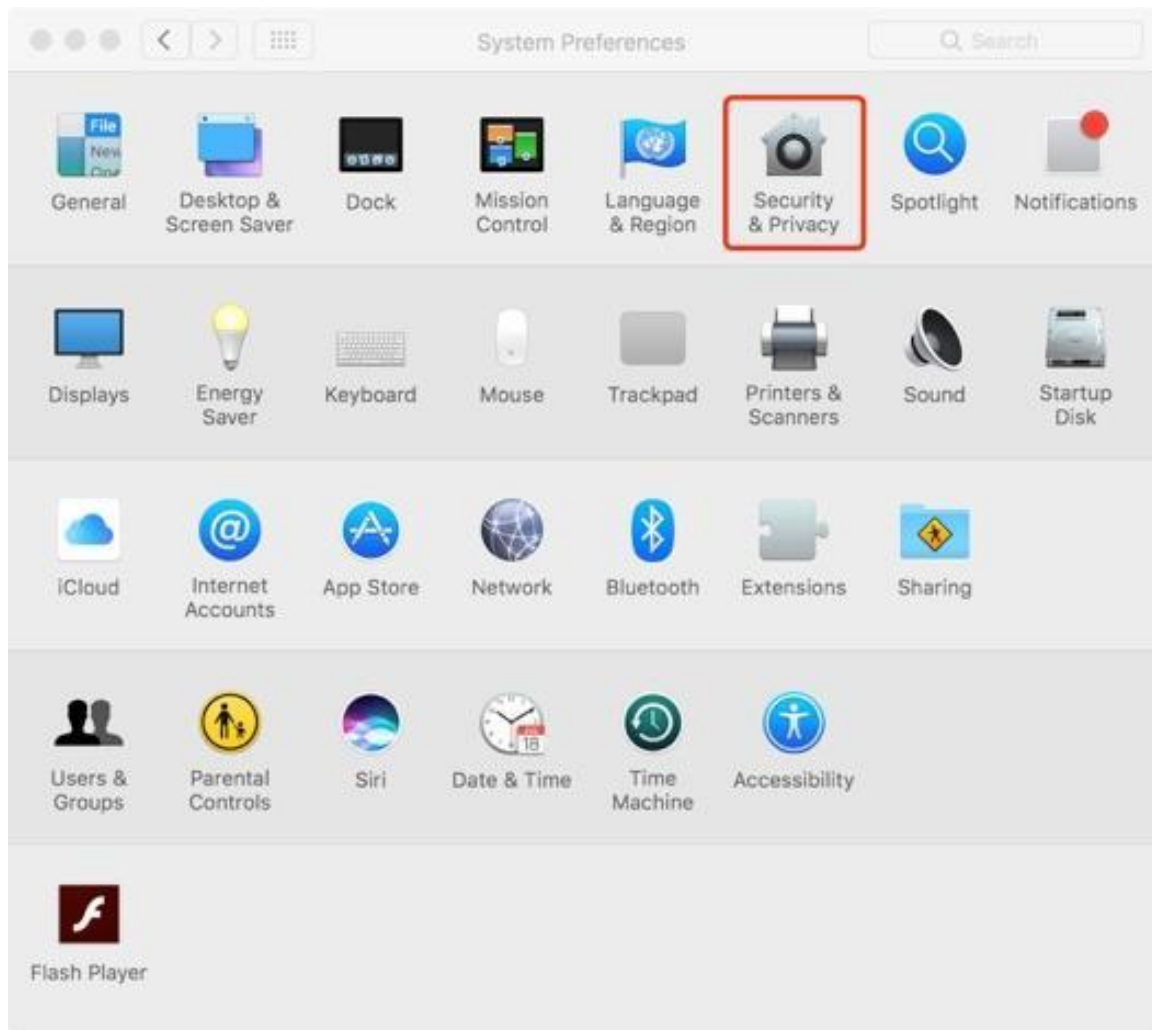


Image 4-3: Security & Privacy

b. Click “Open Anyway” button.

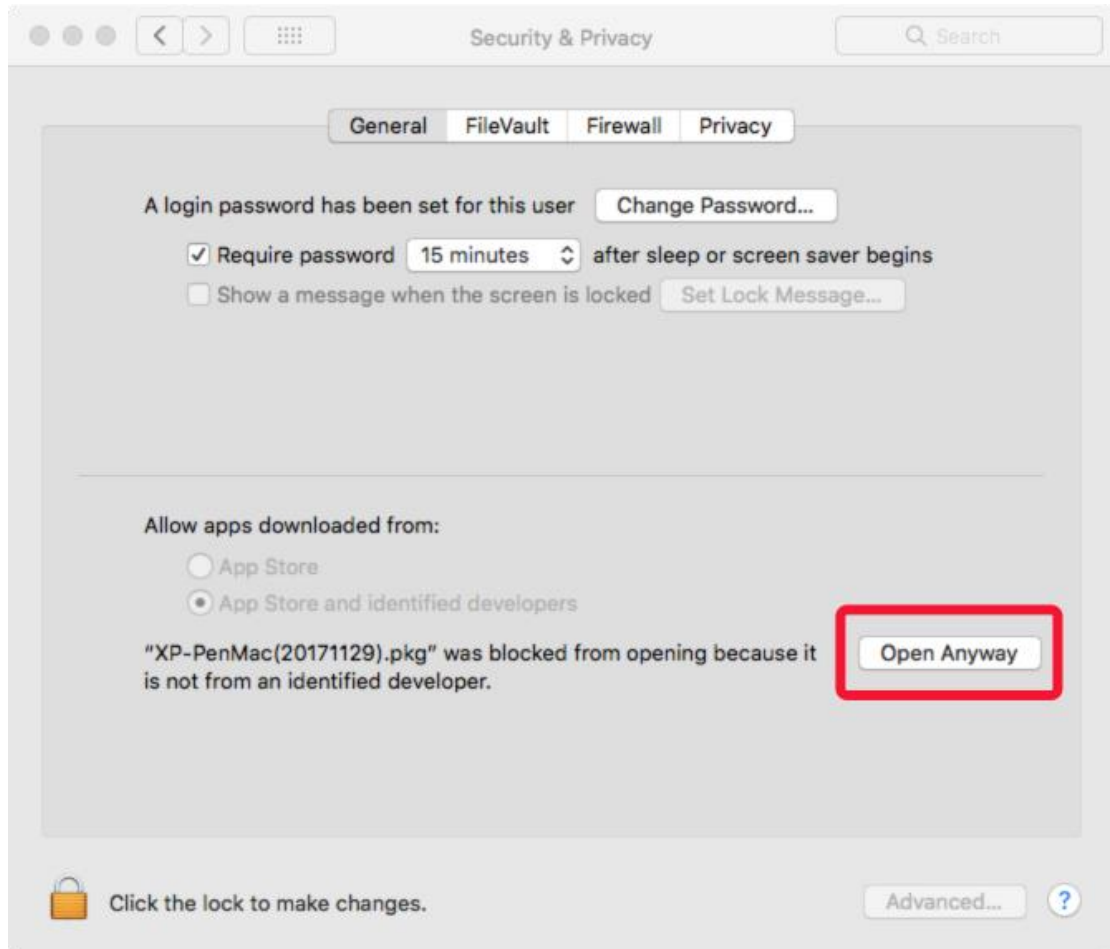


Image 4-4: Open Anyway

c. Input your username and password, then click “Unlock.”

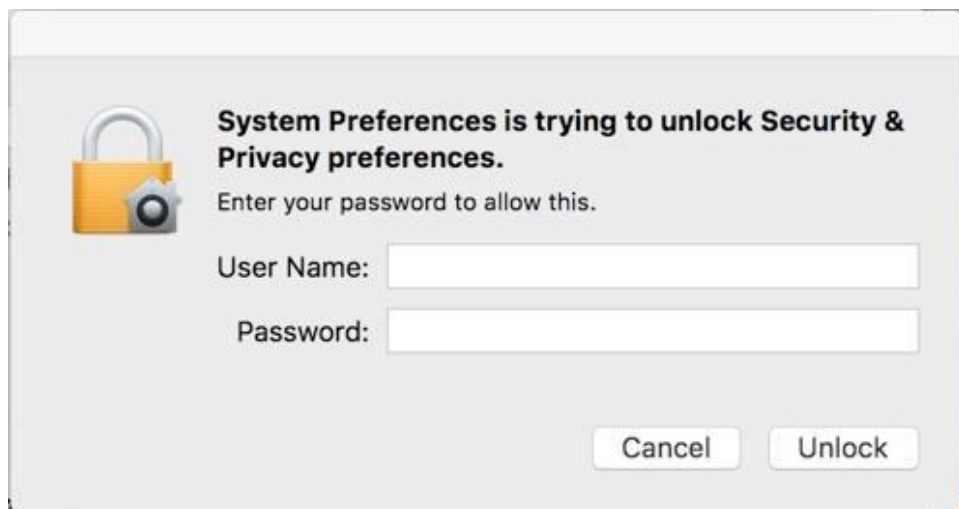


Image 4-5: Password

V. Driver Settings UI

Notes:

- (a). The Star 05's express keys are designed to work with US English keyboards. Keys may not function correctly with the other keyboard languages.
- (b). By default, the Star 05 express keys are mapped to standard Photoshop keyboard shortcuts. Keys can be customized to function efficiently in other software.

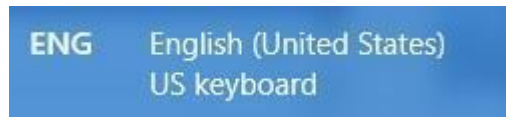


Image 5-1. Keyboard

Windows

The Star 05's driver settings can be opened in two ways:

Double-click the driver's icon () in system tray or your desktop.

Driver UI

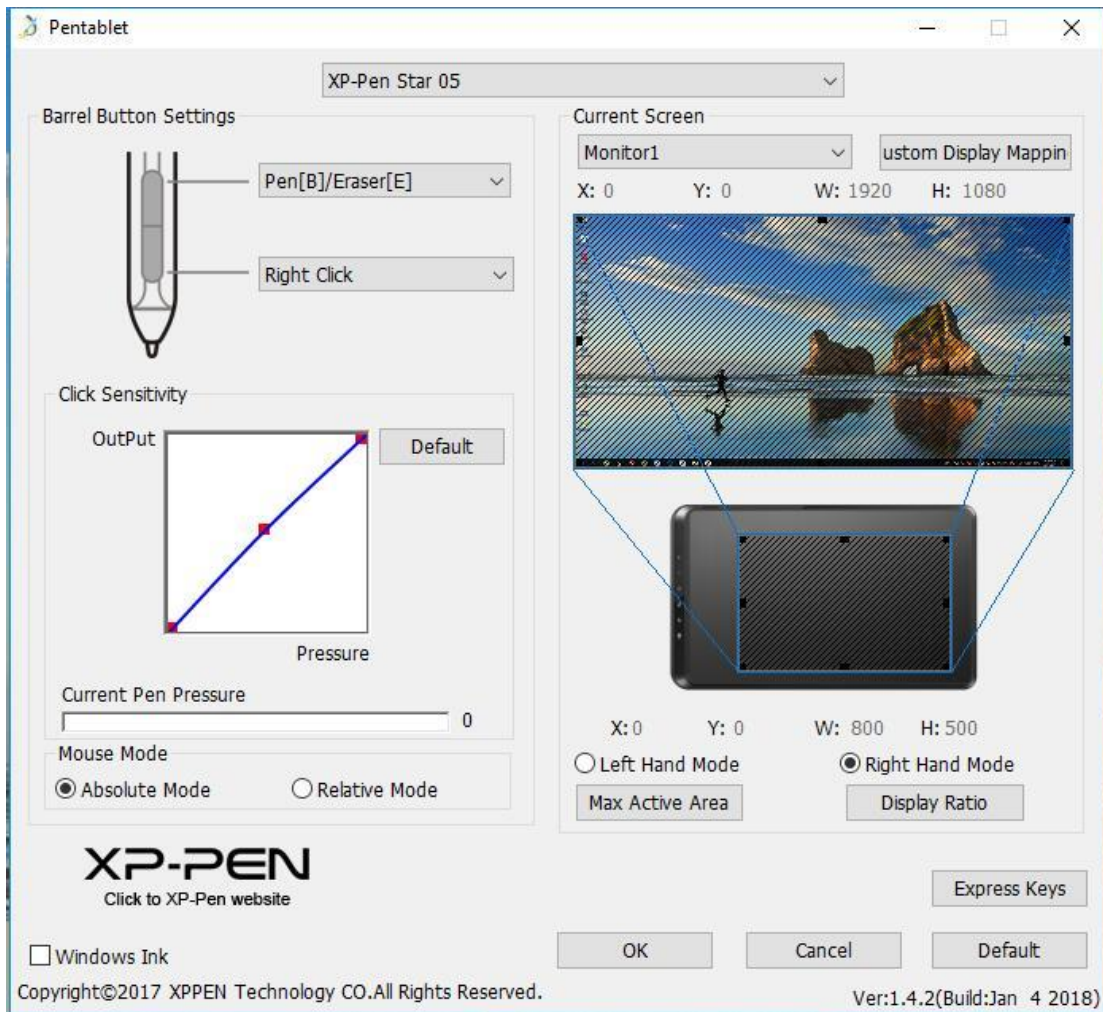


Image 5-2: UI

1.1. Pen Function Settings

You may customize the functions of your tablet pen's barrel buttons here. Use the "Function Key" option to program custom keystrokes.

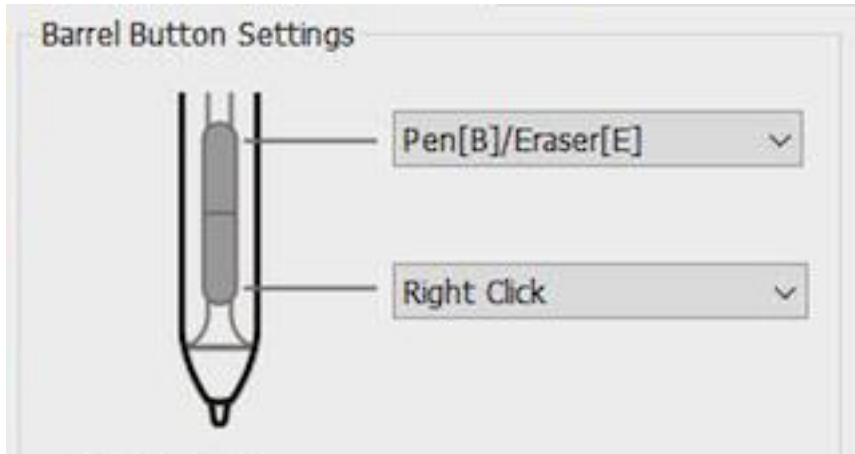


Image 5-3: Pen Functions Setting

Note:

Pen/Eraser Toggle

With the stylus in range of the Star 05's working area, press the assigned barrel button to toggle between pen and eraser modes in compatible drawing software. The current mode will briefly be displayed on your monitor.

1.2. Click Sensitivity & Current Pen Pressure

You can adjust pen pressure to "Output" or "Press" sensitivity on here.

Current Pen Pressure shows the current pressure level being exerted on your tablet and can be used to test pen pressure.

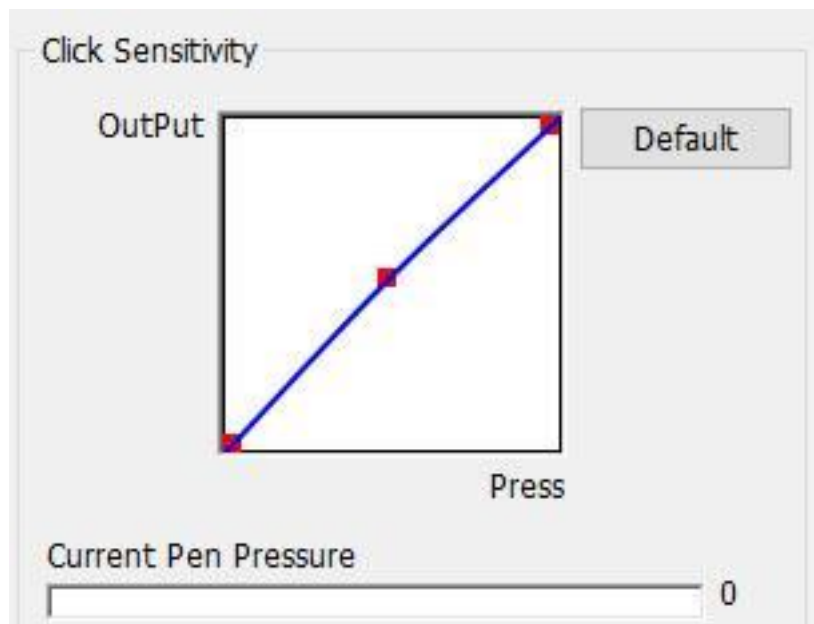


Image 5-4: Click Sensitivity & Current Pen Pressure

1.3. Current Screen

The Star 05 may be configured for use with single or dual monitors.

If only one monitor is selected, your tablet input will be limited to that particular monitor.

And the dimensions of your tablet's on-screen work area can be changed here.

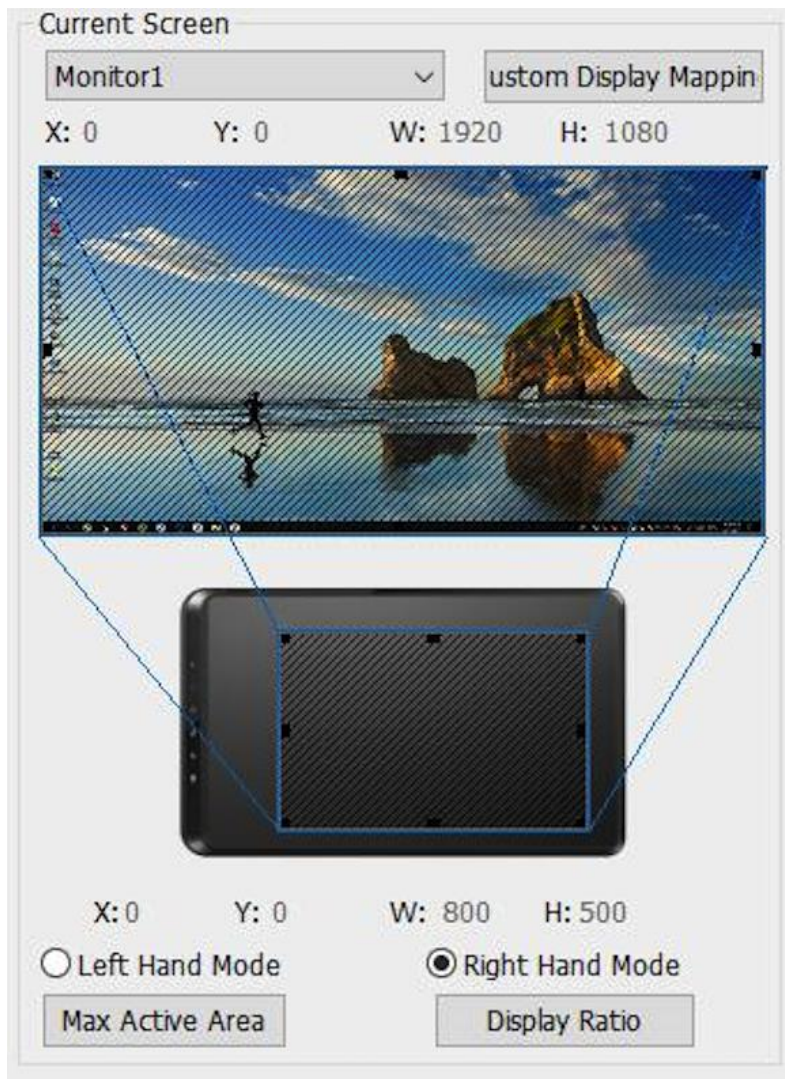


Image 5-5: Update Screen & Full Screen

1.4. Mouse Mode

Absolute (Pen) Mode: Standard tablet mode; Each point of the tablet's work area corresponds to an absolute point on your computer display.

Relative (Mouse) Mode: Mouse mode; The tablet’s work area does not correspond to absolute points on your computer display and your pen works as a standard mouse.



Image 5-6: Mouse Mode

1.5 Windows Ink

Windows Ink capability can be toggled on and off here. Enabling this will allow support for Windows Ink and applications that run using Windows Ink.



Image 5-7: Windows Ink

1.6. Right/Left Hand Mode & Max Active Area/Display Ratio

The Star 06 are set up for right-handed use by default. When switching to left-handed mode, be sure to rotate the actual physical tablet 180 degrees to place its shortcut keys on its opposite side.

Max Active Area & Display Ratio

You can set your Star 05 work area to the max or adjusts the tablet’s on-screen working area to match your monitor’s resolution.

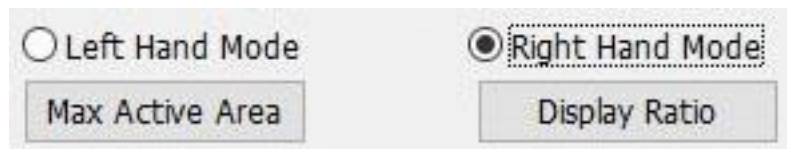


Image 5-8: Right/Left Hand Mode & Max Active Area/Display Ratio

1.7. Express Keys Setting

In this tab, you may edit the functions of the Star 05’s shortcut keys. Use the “Definition” option to program custom keystrokes.

Disable express keys: When you enable it, all of the express keys function will be disabled.

“Hide hints”: When you enable it, and click any express keys the message will not popup on the bottom of screen.

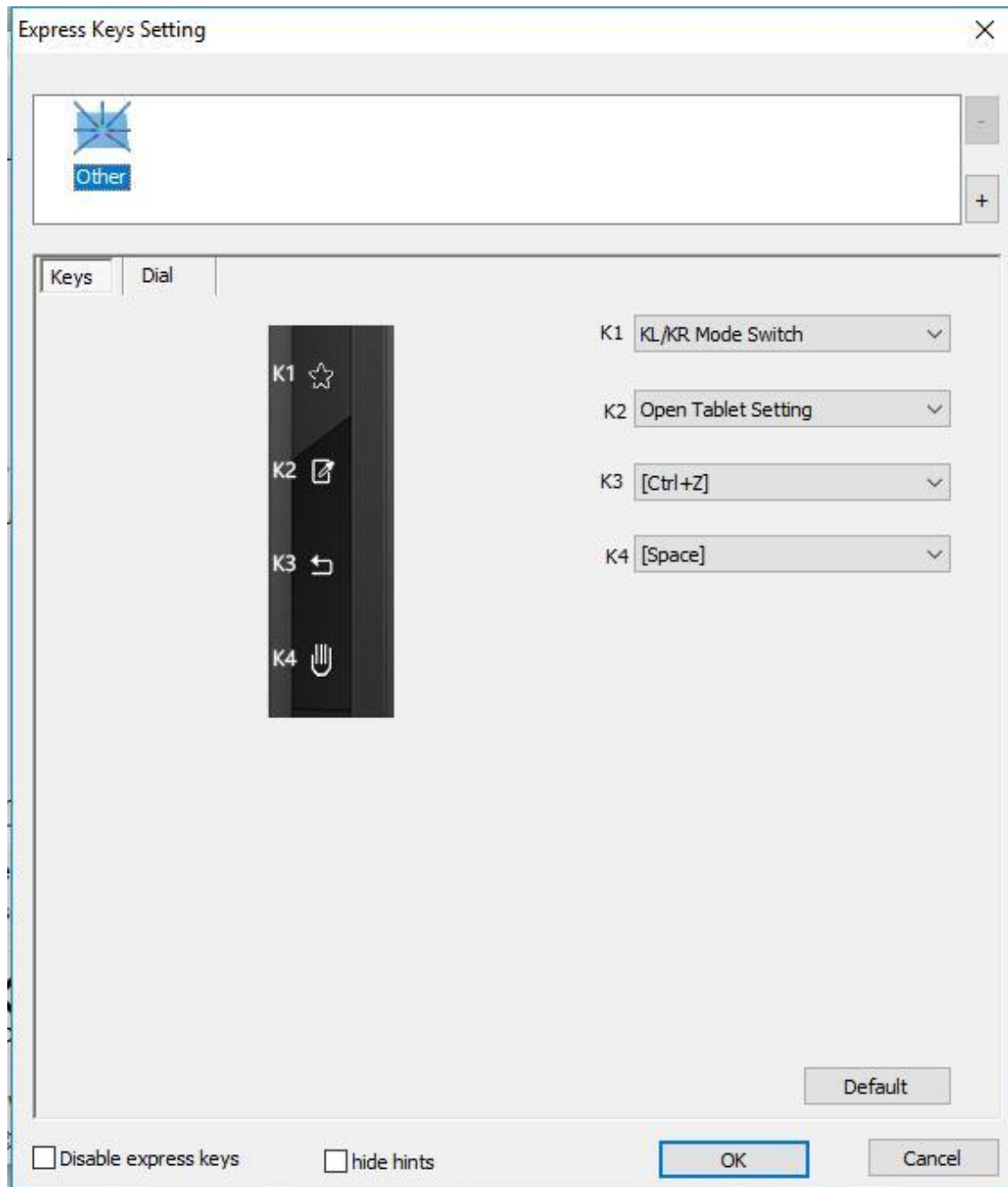


Image 5-9: Keys

You also can define 5 suites dial functions on it.
Click "Default" to revert to manufacturer settings.

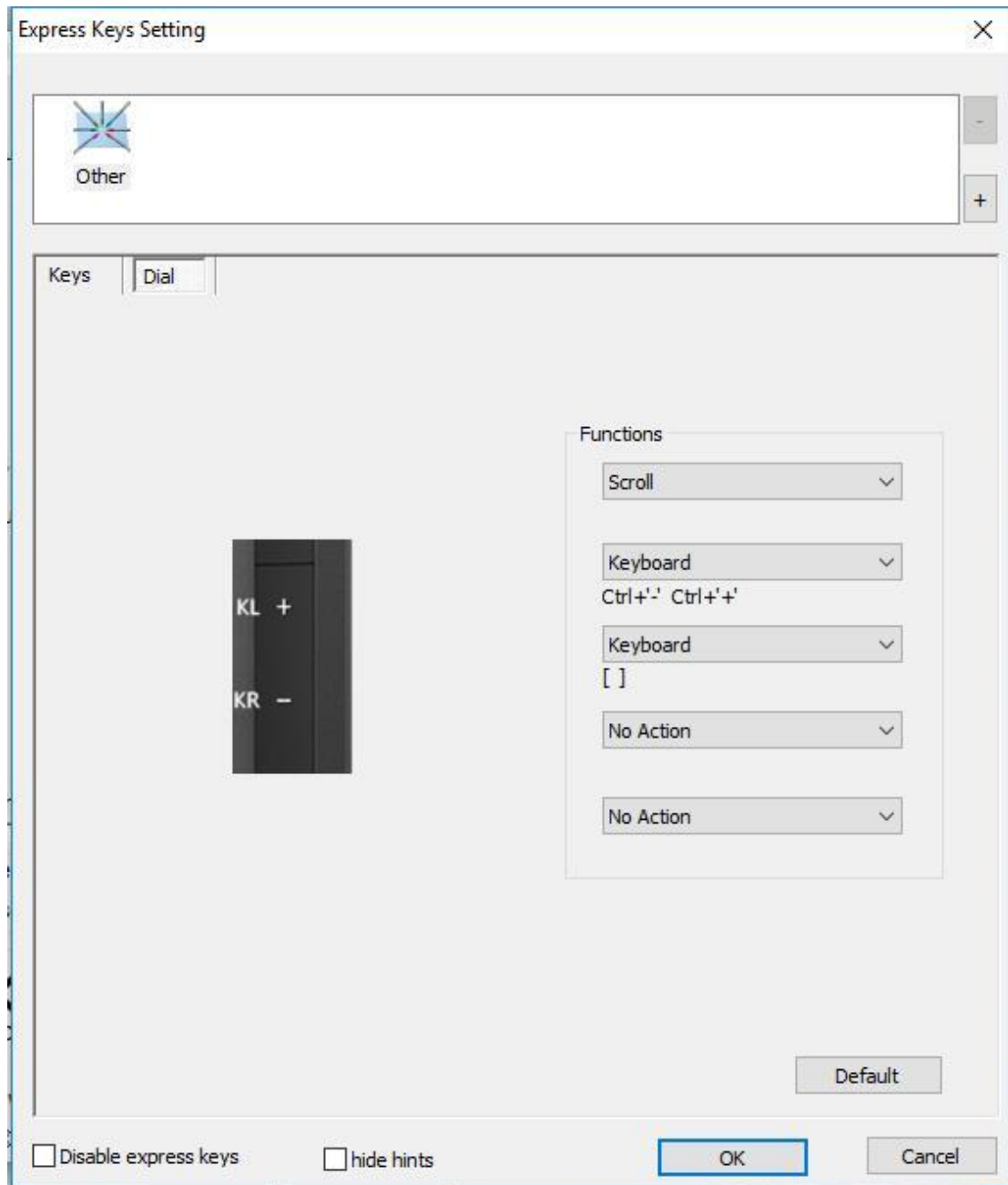


Image 5-10: Dial

Mac

To open the Star 05's driver settings, open Finder > Applications > PenTabletSetting.

Driver UI

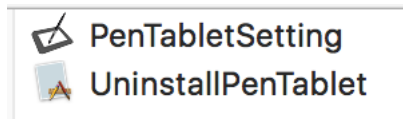


Image 5-11: Tablet Setting

1.1. Pen

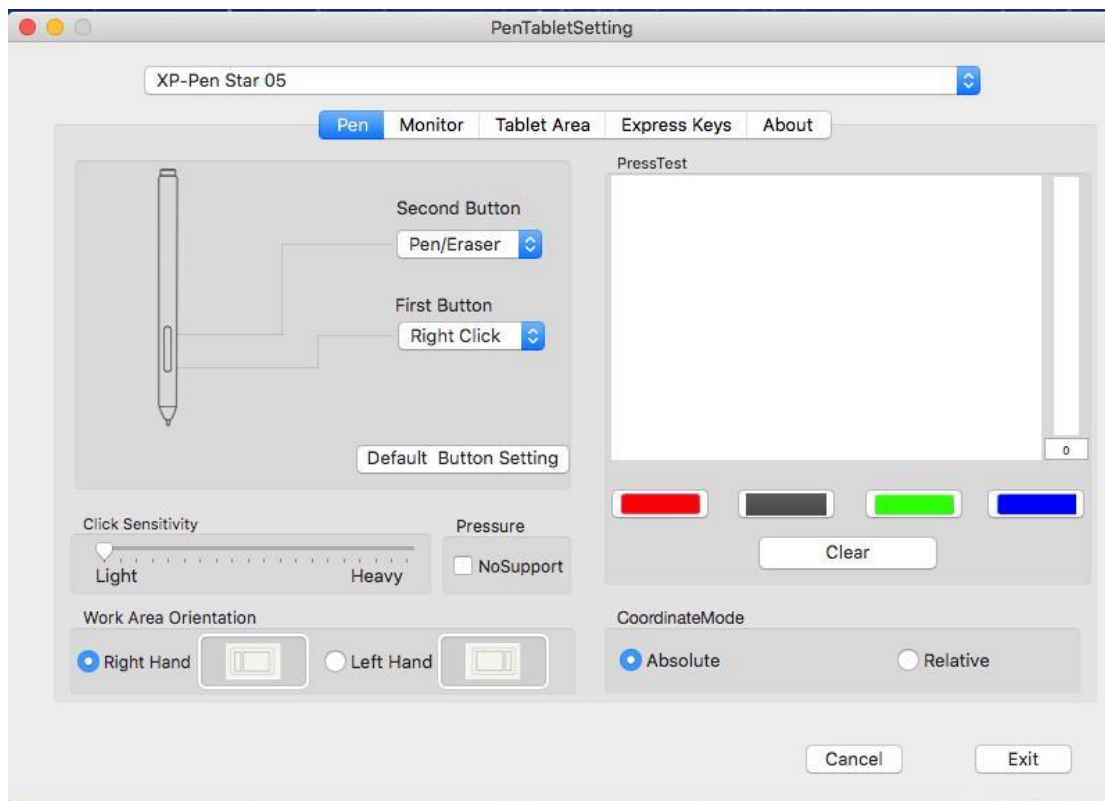


Image 5-12: Mac UI

In this tab, you may customize the functions of your stylus's barrel button, adjust pressure sensitivity, and test your pen pressure.

Click "Default Button Setting" to revert to manufacturer settings.

The Star 05 can also be configured for right or left-handed use in this tab. When switching to left-handed mode, be sure to rotate the actual physical tablet 180 degrees to place its shortcut keys on its opposite side.

Absolute (Pen) Mode: Standard tablet mode; Each point of the tablet's work area corresponds to an absolute point on your computer display.

Relative (Mouse) Mode: Mouse mode; The tablet’s work area does not correspond to absolute points on your computer display and works as a standard mouse.

Pressure: When the “No Support” function is enabled, you can disable the pen pressure function.

Note:

Pen/Eraser Toggle

With the stylus in range of the Star 05’s working area, press the assigned barrel button to toggle between pen and eraser modes in compatible drawing software. The current mode will briefly be displayed on your monitor.

1.2. Monitor

The “Monitor” tab allows you to configure your tablet for use with single or dual monitors. The tablet can also be configured to use only a portion of your display.

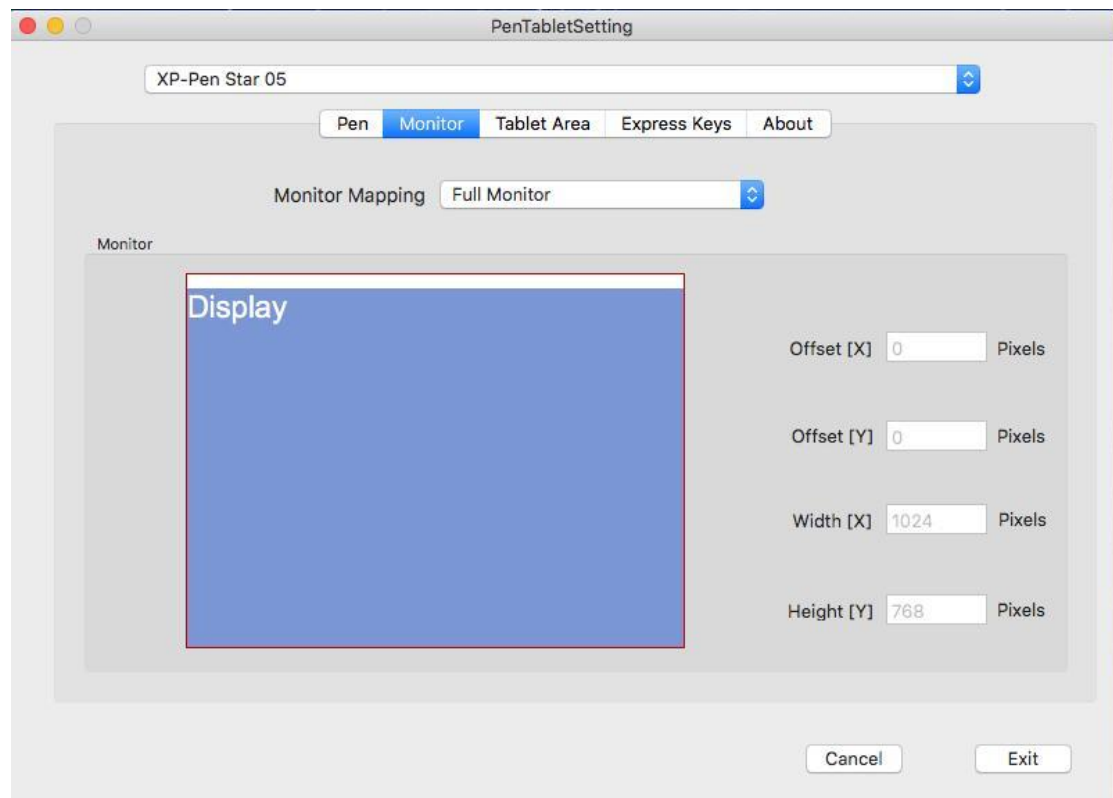


Image 5-13: Full Monitor

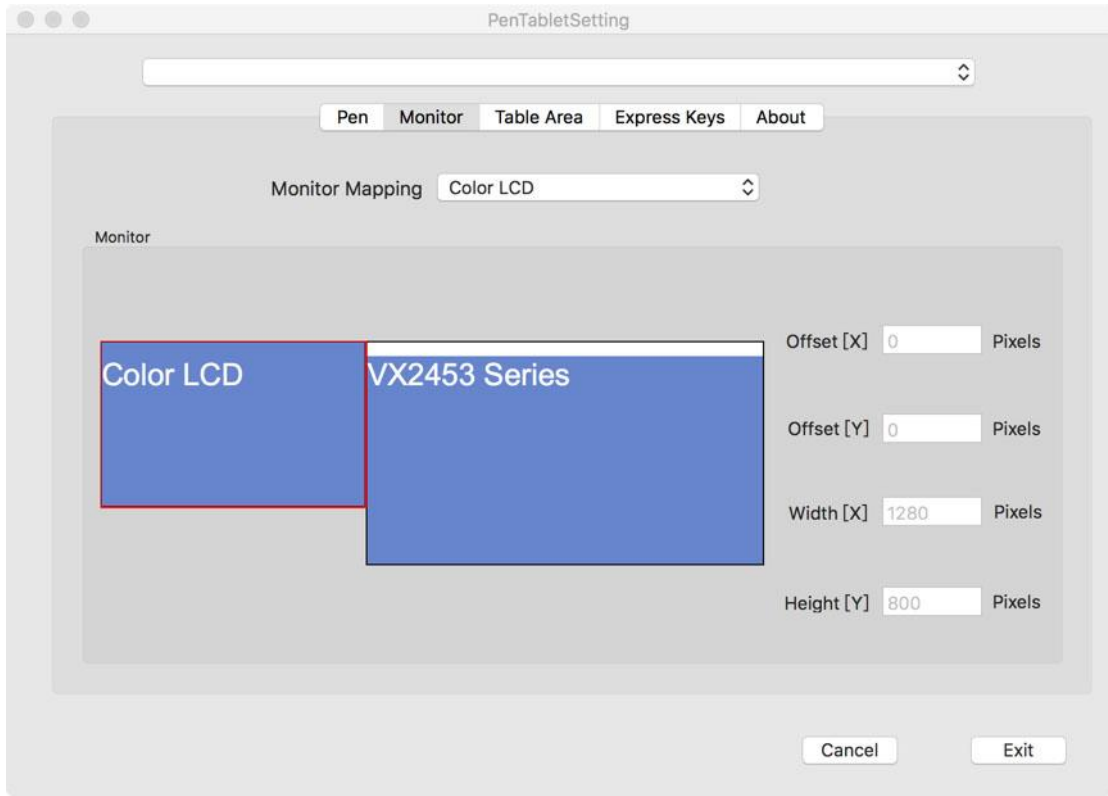


Image 5-14: Single Monitor

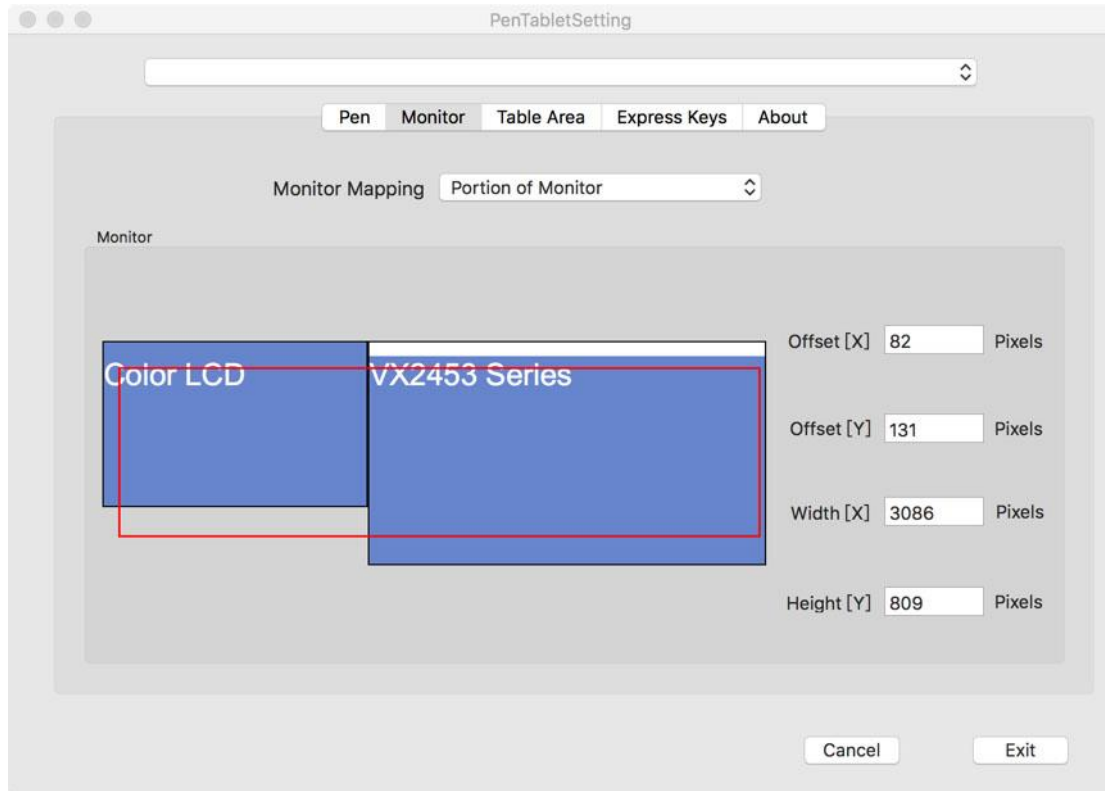


Image 5-15: Single Monitor (Portion)

1.3. Tablet Area

You may adjust your tablet's on-screen working area in this tab.

“Full Area” automatically selects the largest possible working area.

“Screen Ratio” adjusts the tablet's on-screen working area to match your monitor's resolution.

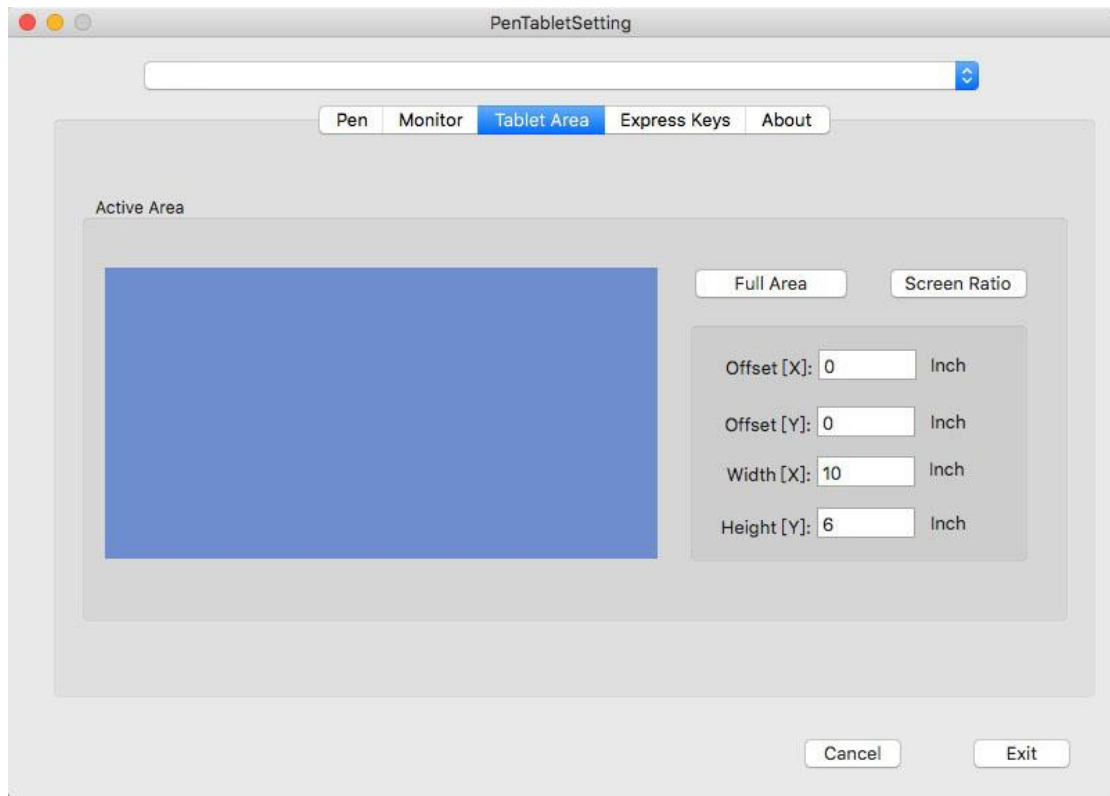


Image 5-16: Full Area

1.4. Express Keys

In the Express Keys tab, you may choose your preferred functions for the Star 05's shortcut keys. Use the "Reset Customer Defined" option to program custom keystrokes.

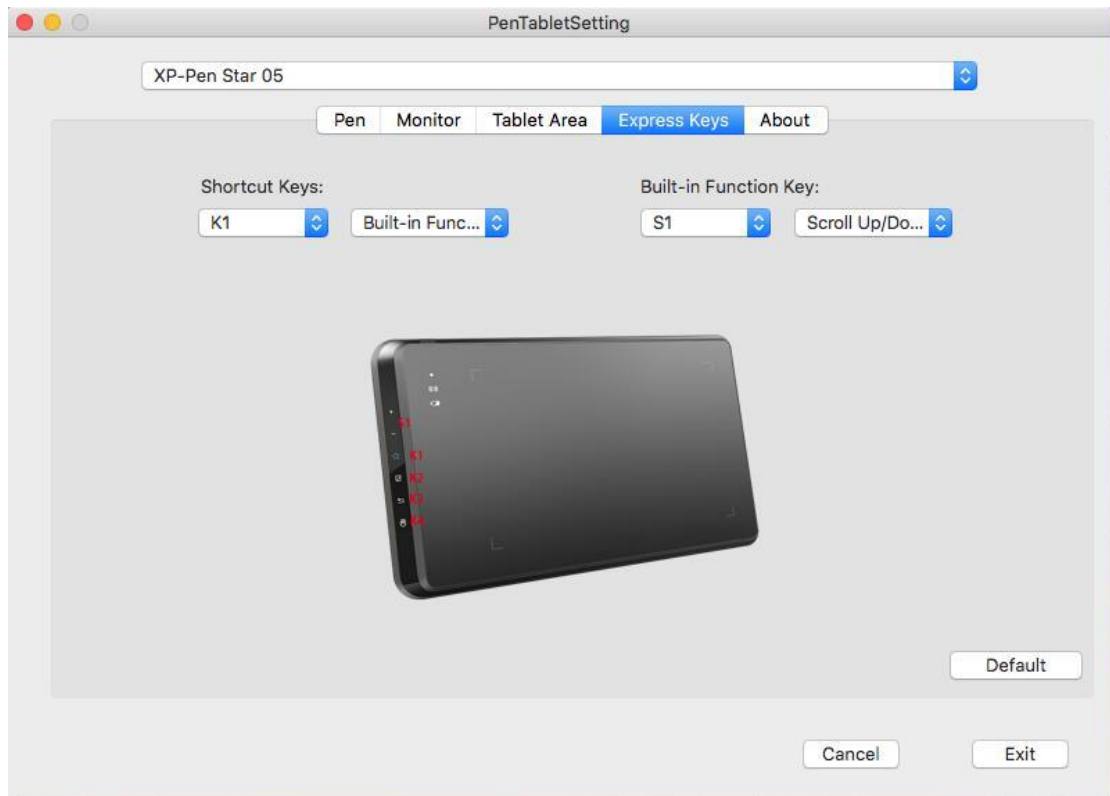


Image 5-17: Express Keys

Click “Built-in Function Key:” to add or remove functions from the S1 key’s queue.

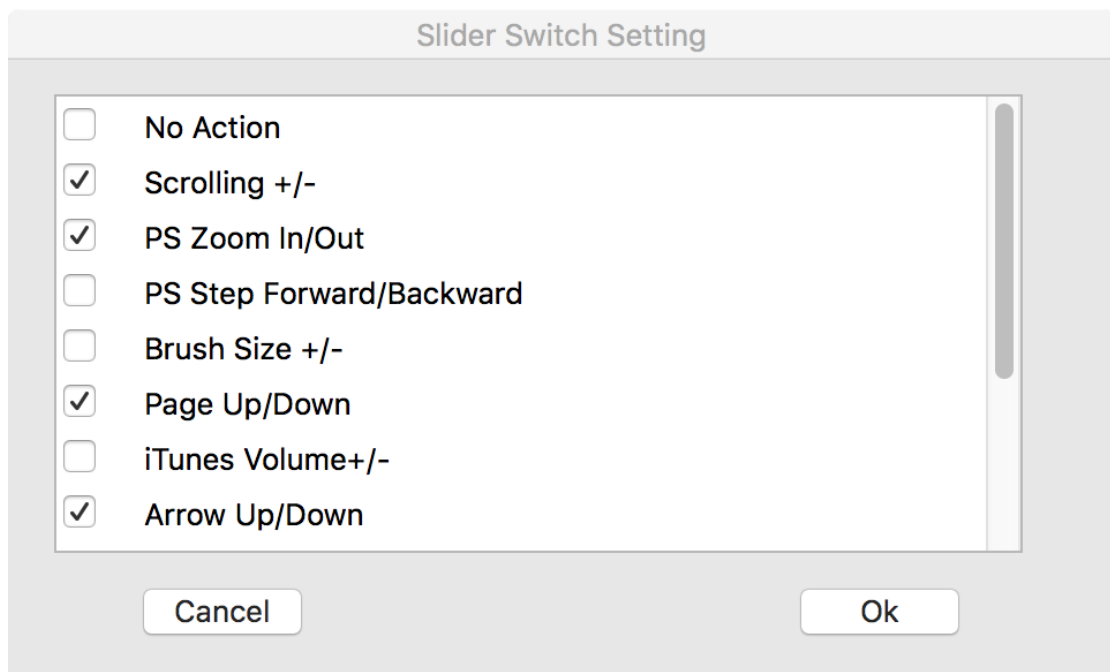


Image 5-18: Slider Switch Setting

5. About

This tab displays the current version of your driver software.

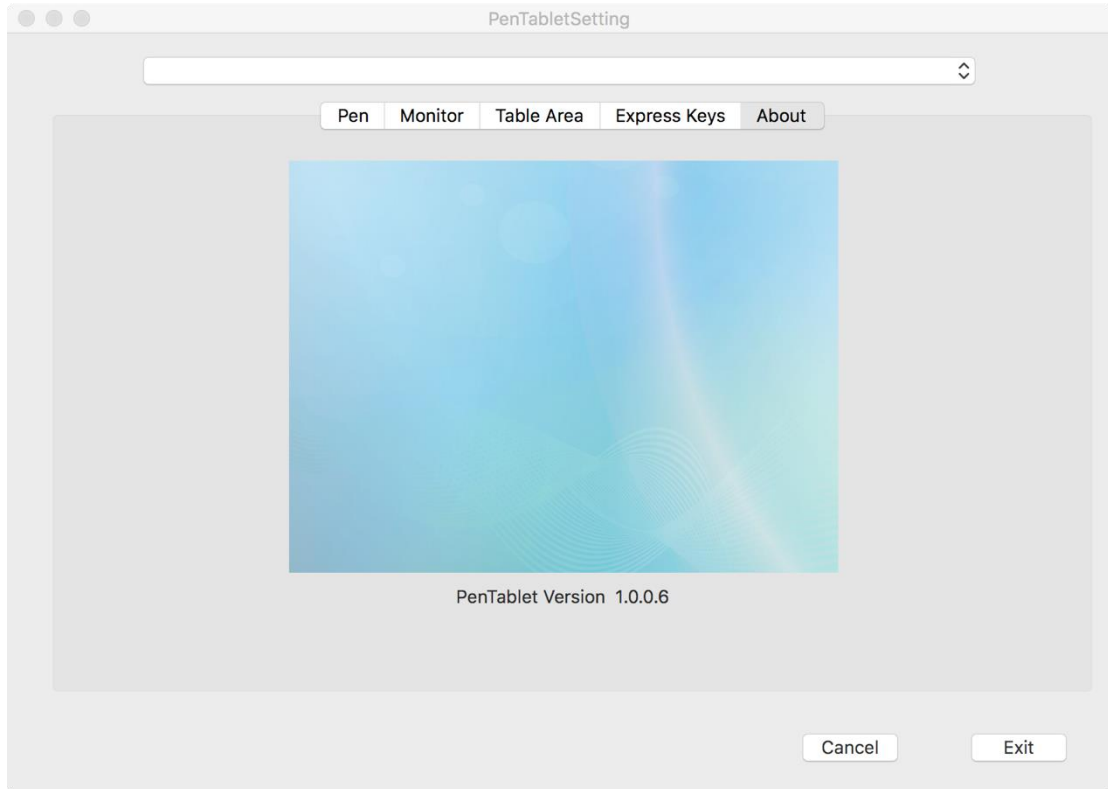


Image 5-19: About

VI. Driver Uninstallment

Windows

In the Start menu, open [Settings] → [Apps & features]. Find “Pentablet” and click “Uninstall.” Follow the on-screen instructions.

Mac

Open [Finder]→ [Application]→ [Pen Tablet], then click “Uninstall Pen Tablet” and follow the on-screen instructions.

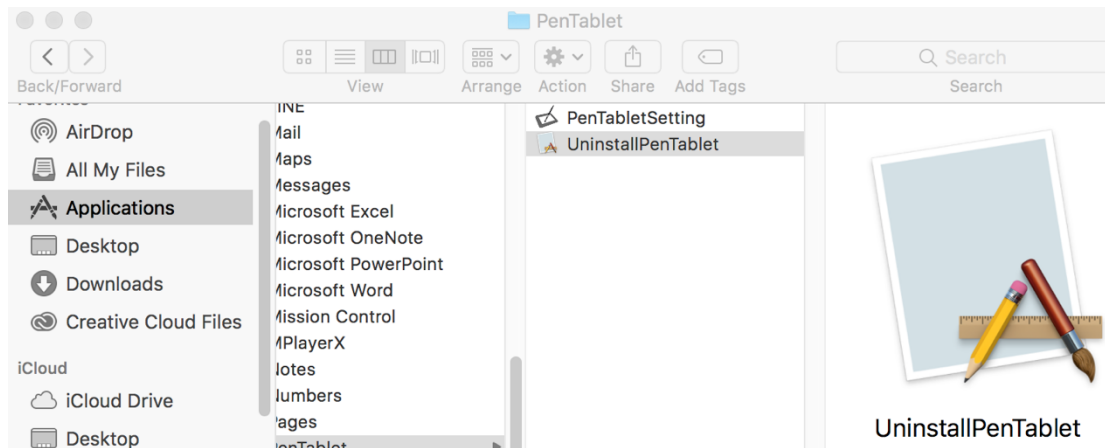


Image 6-1: Mac uninstall

NOTE :

When attempting to reinstall the Star 05 driver, be sure to reboot your computer after the uninstall is complete.

VII. FAQ

1. I can't use the stylus to control the cursor.

a. Does the tablet's status indicator light come on when the stylus is in contact with the working area?

Yes: Uninstall the Star05 driver. If its uninstaller will not run, run the driver's installer again, then uninstall. Reboot, then connect the tablet to your computer and test your stylus. If the cursor responds to your pen input, the tablet's hardware is functional. Reinstall the Star05 driver according to these steps (Windows): Download the tablet's latest driver from www.xp-pen.com, then extract the ".zip" contents to the desktop.

Close all non-essential software and processes (Some software may use the wintab process and interfere with the driver installation. OneDrive in particular often causes issues; its system tray icon looks like two grey clouds.).

Open C:\Windows. Using the "search" box near the top-right of the window, search for "WinTab32.dll" and delete any instances.

Connect the tablet and power it on, then run the driver installation. Complete the installation, then reboot.

If the tablet's system tray icon is not visible after rebooting:

Open C:\Windows. Open File >> Folder and Search options >> View. Enable "Show


hidden files and folders,” then exit options. Search for “wtclient.” Right-click both instances and “Run” each as Administrator. The driver icon should appear.

No: Ensure that the tablet’s power switch is turned ON. If you are using wireless USB mode, test the tablet with a wired USB connection.

2. The Star05’s response time is slow during wireless USB use.

- a. The tablet’s battery may be running low. Test the tablet in wired USB mode.

3. How do I know that the Star05 driver installed successfully?

- a. After installing the driver, the Star05’s driver icon  should be visible in your system tray on the bottom-right of your screen (Windows OS). Pen input will control the cursor and pressure sensitivity will be functional in the driver UI’s “Pressure Test” tab.

4. How do I determine if a problem is software or hardware related?

- a. Connect and install the Star05 on a different computer. If the tablet functions properly on the new computer, you are experiencing a software issue—confirm that ALL tablet drivers (including the Star05) are uninstalled and removed from your computer, then reinstall the Star05.
- b. The Star05’s indicator lights will help you determine if an issue is hardware-related. When functioning properly, the white status indicator light will light up when the stylus pen is in range of or touching the tablet’s working area. If the light does not turn on under these conditions while the Star05 is powered ON, you may be experiencing a hardware issue.

If you have any questions, please contact us at:

Skype: XP-Pen

Web: www.xp-pen.com

Email: service@xp-pen.com