

# User Manual

Innovator ID160F&ID160F-E

## ■ Safety Precautions

- ◆ This manual uses the following symbols to ensure that the XP-PEN Tablet is used correctly and safely. Be sure to read and observe the Safety Precautions.



- ◆ **Do not use this product in a control system area that requires a high degree of safety and reliability.**

- ◆ In such a system, this product could negatively affect other electronic devices and could malfunction due to the effect of those devices.



- ◆ **Turn the power off in areas where use of electronic devices is prohibited.**

- ◆ Turn the power off your tablet when onboard an aircraft or in any other location where use of electronic devices is prohibited, otherwise it may negatively affect other electronic devices in the area.

- ◆ Unplug the USB connector from this product and turn the power off.

- ◆ **Keep the product away from infants and young children.**



- ◆ Accessories to this gadget may present a choking hazard to small children. Keep all accessories away from infants and young children.



### ◆ CAUTION

- ◆ **Do not place this product on unstable surfaces.**

- ◆ Avoid placing this product on unstable, tilted surfaces or any locations exposed to excessive vibrations. This may cause the tablet to fall or impact surfaces which can result in damage and/or malfunction to the tablet.

- ◆ **Do not place heavy objects on top of this product.**

- ◆ Do not place heavy objects on the product. Do not step on, or place your body weight on this product as this may cause damage.



- ◆ **Avoid extreme high or low-temperature exposure to the XP-Pen tablet.**

- ◆ Do not store this product in areas that drop below 5°C or above 40°C. Avoid locations with excessive temperature fluctuations. This may result in damage to the product and its components.



- ◆ **Do not disassemble**

- ◆ Do not disassemble or modify this product. Doing so may expose you to heat, fire, electric shock and injury. Disassembling the product will void your warranty.



- ◆ **Do not use alcohol for cleaning**

- ◆ Never use alcohol, thinner, benzene or other mineral solvents that may discolor and cause deterioration to the product.



- ◆ **Do not expose to water**

- ◆ Be cautious of water and all liquids that may be near the tablet. Exposure to water or liquid could damage the product.



## ◆ CAUTION



- ◆ **Avoid placing metallic objects and especially magnetic objects on the tablet.**

- ◆ Placing metallic and/or magnetic objects on this product during operation may cause malfunction or permanent damage.



- ◆ **Do not strike the pen against hard objects.**

- ◆ Striking the pen against hard objects can cause damage to the pen.

- ◆ **Avoid gripping the pen too tightly, and DO NOT use excessive weight/pressure on the Express Key button and pen.**



- ◆ The stylus pen is a high-precision instrument. Avoid pressing too tightly on the Express Key button, and keep any objects from covering the pen to avoid potential damage. Keep the pen away from areas of high dust, contaminants, or any particulate matter that can effect or damage the pen.

## ◆ Limitation of Liability

- XP-Pen shall in no event be liable for damages resulting from fires or earthquakes, including those caused by third parties and those arising from user misuse, abuse or neglect.
- XP- Pen shall in no event be liable for incidental damages- including but not limited to loss of business income, interruption of business activities, corruption or loss of data – that arise from use or failure to use this product correctly.
- XP- Pen shall in no event be liable for damage resulting from uses not documented in this manual.
- XP- Pen shall in no event be liable for damages or malfunction arising from the connection to other devices or use of third party software.

# Contents

## I. Product Overview

Overview

## II. Connection

## III. Driver Installation

Windows

Mac

## IV. Driver Settings UI

Windows

Mac

## V. Driver Uninstall

Windows

Mac

## VI. FAQ

Thank you for purchasing the XP-Pen product . Our product user manual currently supports English, Russian, Japanese, German, Korean, Chinese, Italian, Spanish, French and Polish. We apologize if your preferred language is not supported.

## { I. Product Overview }

### Overview

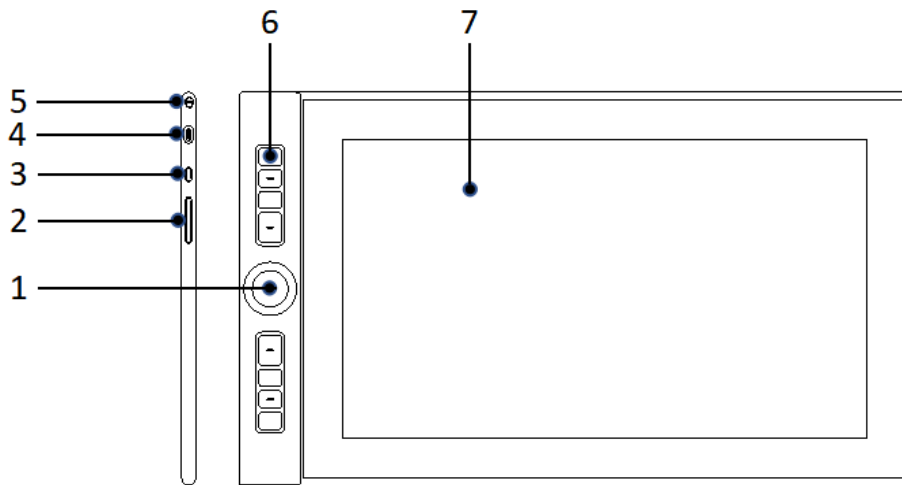


Image 1-1. Overview

1. Double wheel
2. Brightness up/down
3. Power key
4. USB port
5. Charm hole
6. Express key
7. Active area

## { II. Connection }

Connect the three-in-one HDMI cable and black USB-A cable to your computer, and connect the red USB-A cable to the adapter of your computer or wall outlet; then, connect the Type-C cable to the graphic display.

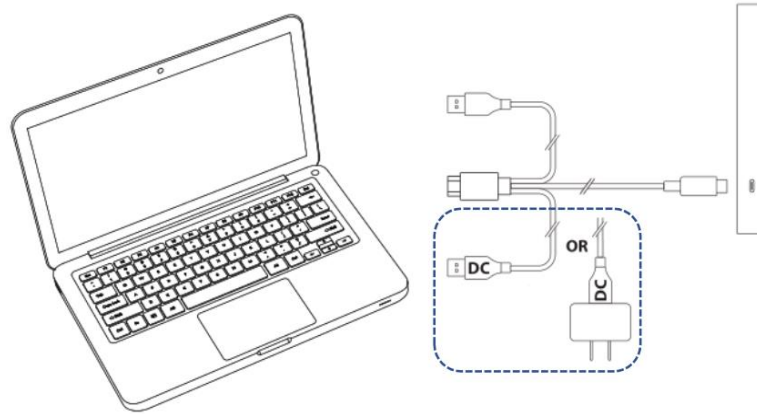


Image 2-1

**Notes:**

- a. Do not use a type-C to type-C USB cable to connect the graphic display.
- b. If your computer is a desktop, please connect the graphic display HDMI cable into the same video card as your general monitor.

## { III. Driver Installation }

**Supported operating systems:**

Windows 10, 8 or 7

Mac OS X 10.10 or above

**Notes:**

1. Connect the graphic display to your computer.
2. Log onto the official website of XP-Pen (<https://www.xp-pen.com/>) to download the latest version of the driver.
3. After downloading the driver, please temporarily disable the anti-virus software and unzip the driver file; then open the folder. For Windows users, please run the ".exe" file; for Mac users, please run the ".dmg" or ".pkg" file; and then drag the “PenTablet” folder to the “Applications” folder with the mouse (as shown below), so that the installation is completed.

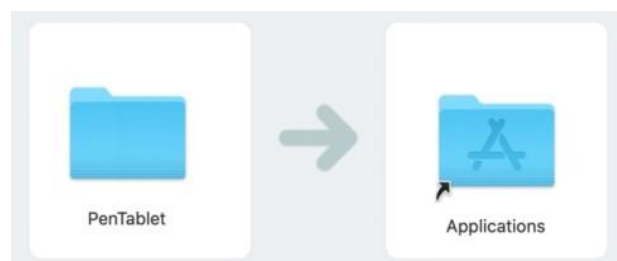


Image 3-1. Drag install Driver

**Notes:**

If your system Mojave (10.14) , please click this button to setup your graphic display and reboot.



Image 3-2. Mojave Authorization

4. Open the driver interface of the graphic display to set and test whether the stylus pressure is appropriate.
5. For Windows users, please go to the "Control Panel>Display Settings" window of the operating system, and set the size of the font, icons of Apps and other items to 100%.  
For Mac users, please navigate to the "System Preferences>Display" window of the operating system, and set the resolution to "Default Value" in the display window.

# { IV. Driver Settings UI }

## Windows Driver UI

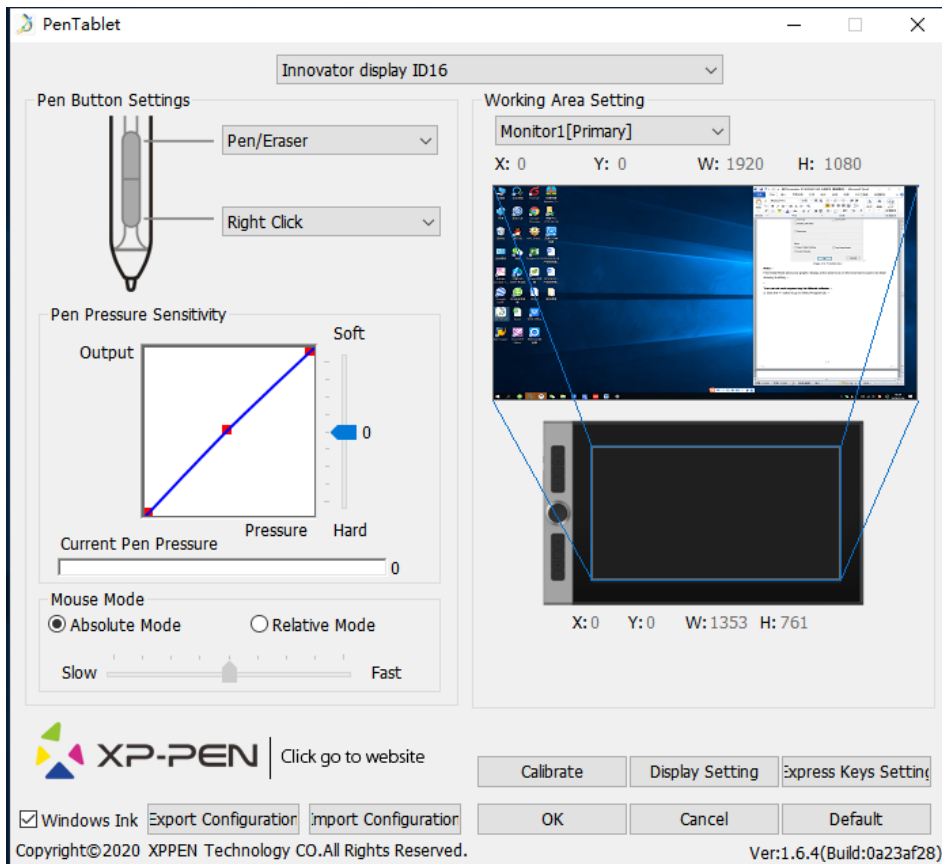


Image 4-1. Windows 驅動介面

## 1.1. Pen Function Settings

You may customize the functions of your tablet pen's barrel buttons here. Use the "Function Key" option to program custom keystrokes.

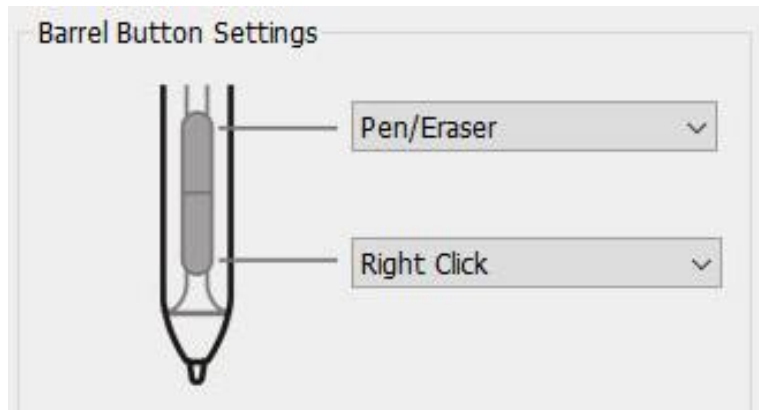


Image 4-2. Pen Functions Setting

### Note:

#### Pen/Eraser Toggle

With the stylus in range of the graphic display's active area, press the assigned barrel button to toggle between pen and eraser modes in compatible drawing software. The current mode will be displayed briefly on your monitor.

## 1.2. Click Sensitivity & Current Pen Pressure

You can adjust pen pressure to "Output" or "Press" sensitivity on here.

Current Pen Pressure shows the current pressure level being exerted on your graphic display and can be used to test pen pressure.

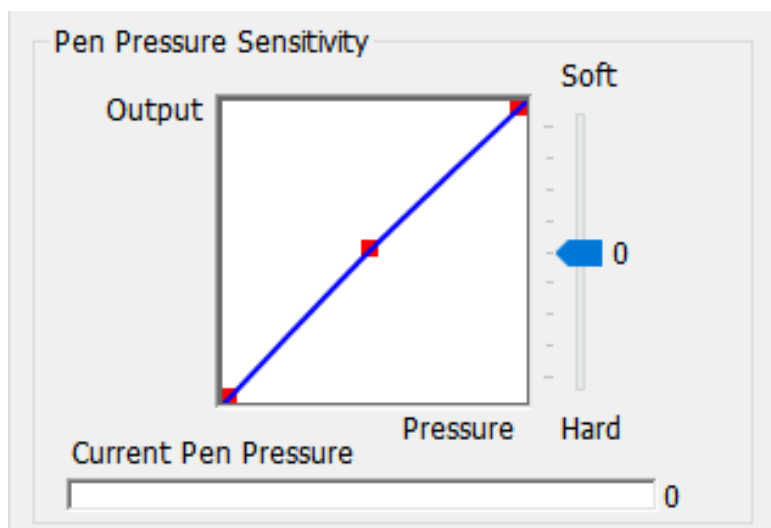


Image 4-3. Click Sensitivity & Current Pen Pressure



### 1.3. Mouse Mode

Absolute (Pen) Mode: Standard graphic display mode; Each point of the graphic display's active area corresponds to an absolute point on your computer display.

Relative (Mouse) Mode: Mouse mode; The graphic display's active area does not correspond to absolute points on your computer display and your pen works as a standard mouse.

#### Note:

The Innovator ID160F&ID160F-E is a graphic tablet monitor so please set it to Absolute mode to avoid stylus and cursor offset issue.

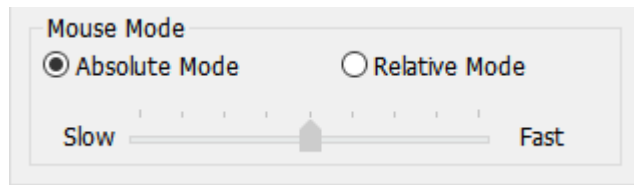


Image 4-4: Mouse Mode

### 1.4. Current Screen

The graphic display may be configured for use with single or dual monitors. Generally, this should be set to "Monitor 1" or Monitor 2."

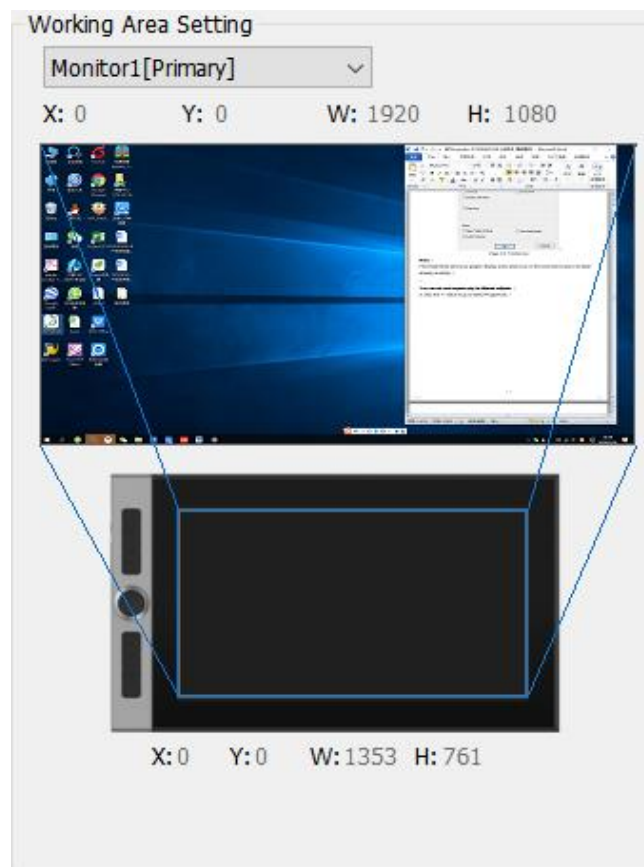


Image 4-5. 螢幕映射

## 1.5. Windows ink

This capability can be toggled on and off here. Enabling this will allow support for Windows Ink and applications that run using Windows Ink.



Image 4-6. Windows Ink

## 1.6. Import & Export Profiles



Image 4-7. Export & Import

You can use the Import & Export Profile function to save/load your barrel buttons and express keys setting.

### Note:

When you finish setting up your barrel buttons and express keys, click the OK button to save and exit the graphic display settings menu. Open graphic display setting again and click Export Configuration.

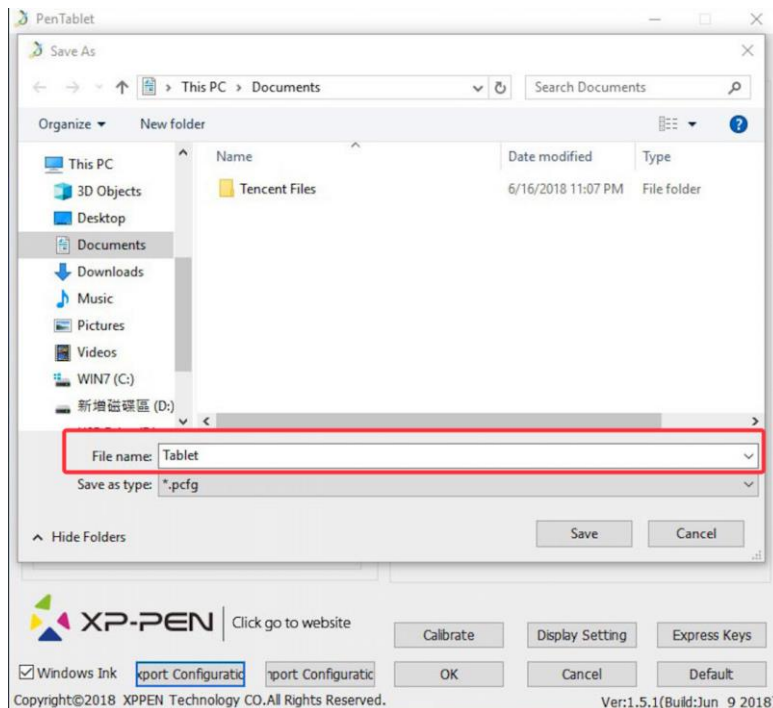


Image 4-8. Export Profile

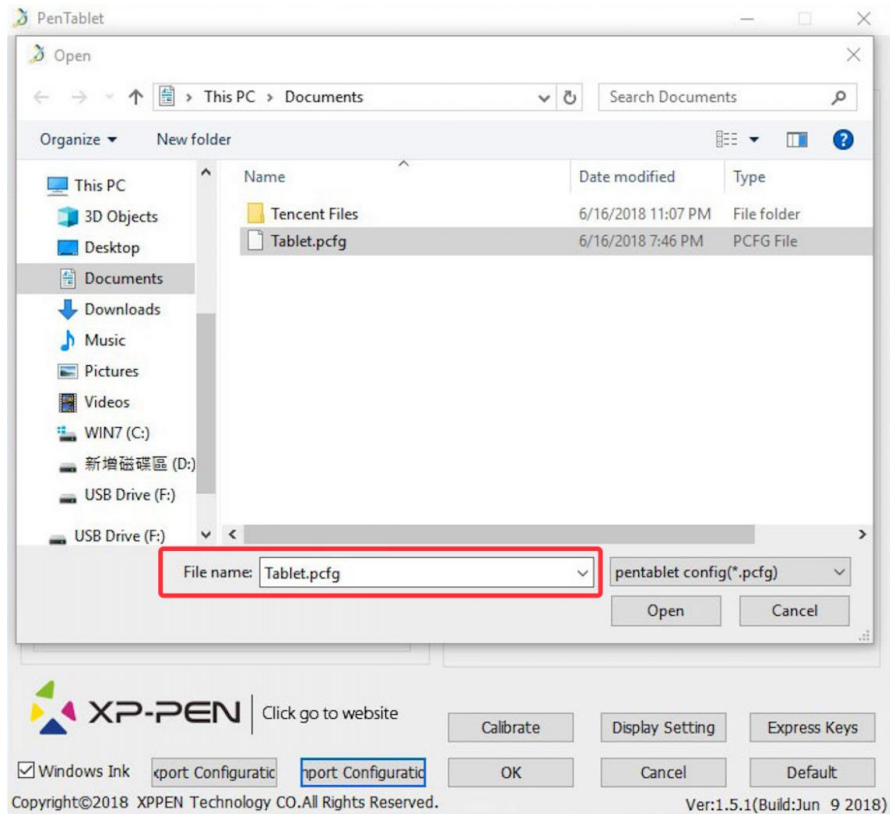


Image 4-9. Import Profile

## 1.7. Calibration

The Calibration tab allows you to set up calibration for your graphic display.

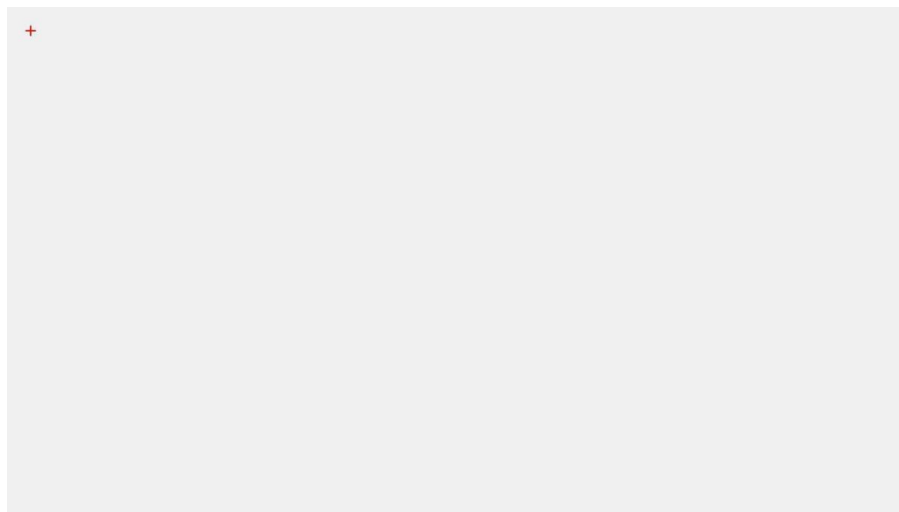


Image 4-10. Calibration

## 1.8. Display Setting

- Color Temperature: Use to adjust the graphic display' s color balance.
- User: Brightness and contrast can also be adjusted here.
- Rotate: You may rotate the graphic display' s display in this tab.

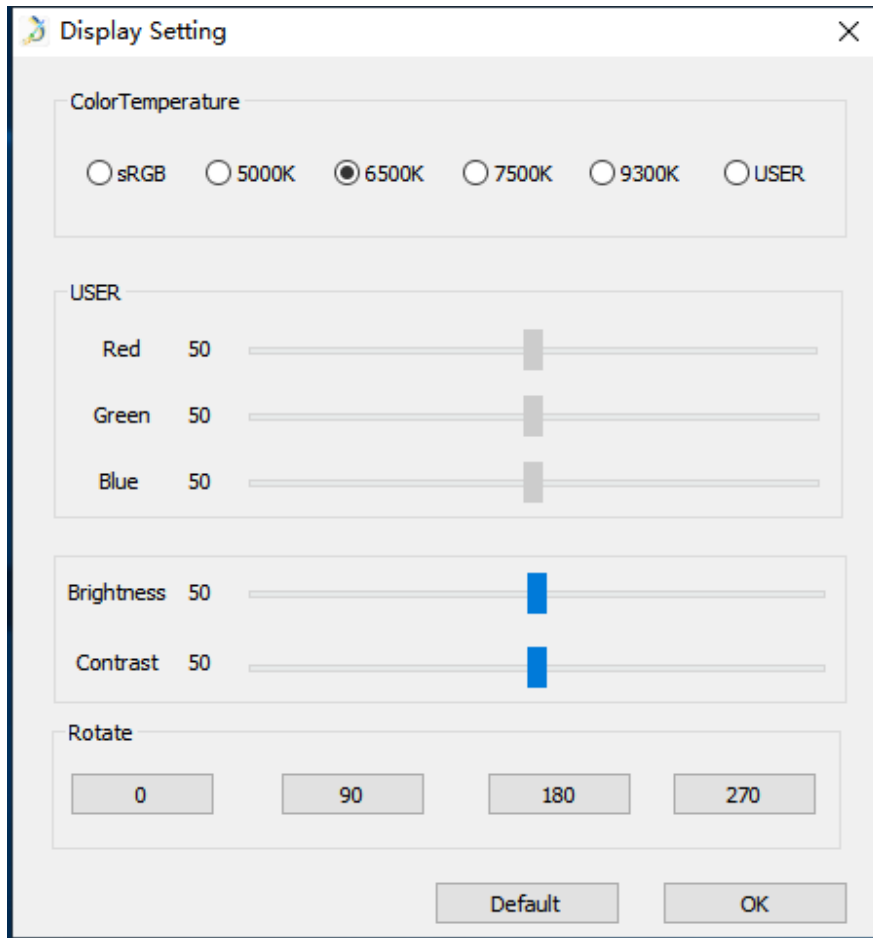


Image 4-11. Display Setting

**Note:**

- a. When you set the rotate function, you must also rotate your graphic display.
- b. You must set the graphic display to Extend These Displays first, after which you can change the rotation.

**1.9. Express Keys Setting**

**Notes:**

- a. The graphic display' s express keys are designed to work with US English keyboards. Keys may not function correctly with the other keyboard languages.
- b. By default, the graphic display express keys are mapped to standard Photoshop keyboard express. Keys can be customized to function efficiently in other software.
- c. You must set one express key from the Switch function to switch dial.

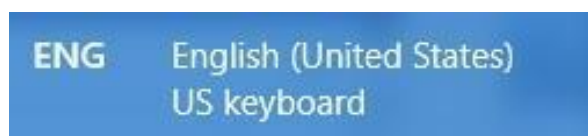


Image 4-12. Keyboard

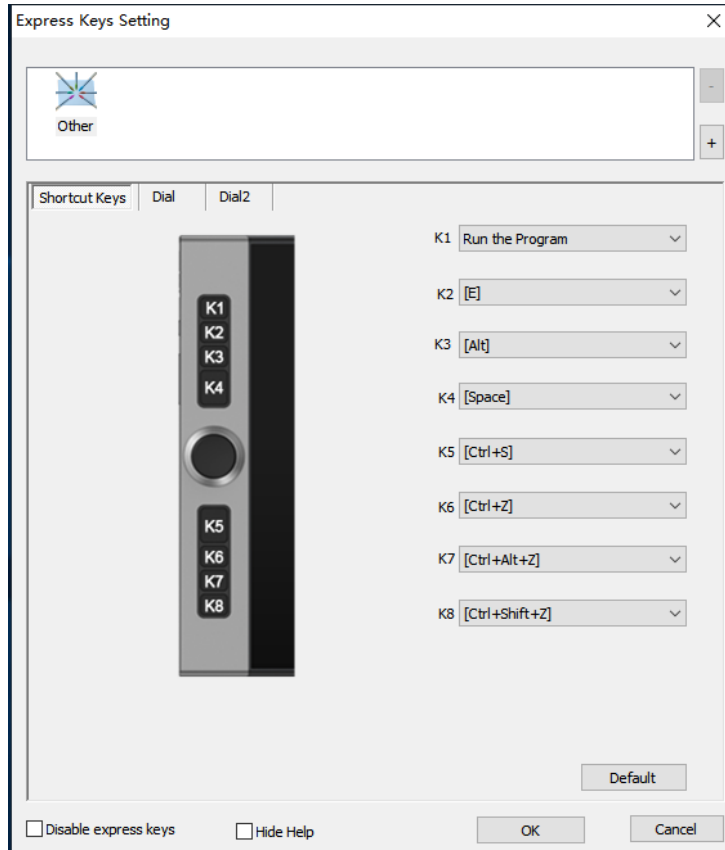


Image 4-13. Keys

You may edit the functions of the graphic display’s express keys. Use the “Definition” option to program custom keystrokes.

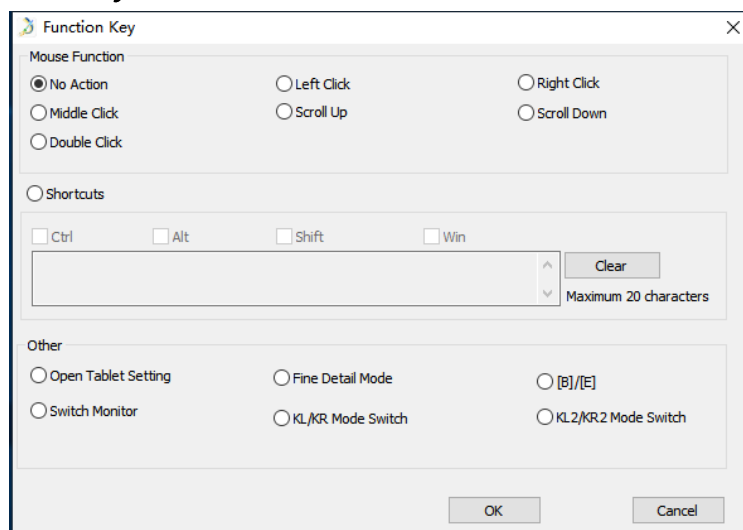


Image 4-14. Function Key

**Note:**

Find Detail Mode allow your graphic display active area focus on the small size scope to do detail drawing & editing.

**You can set each express key for different software.**

- a. Click the “+” button to go to Select Program tab.

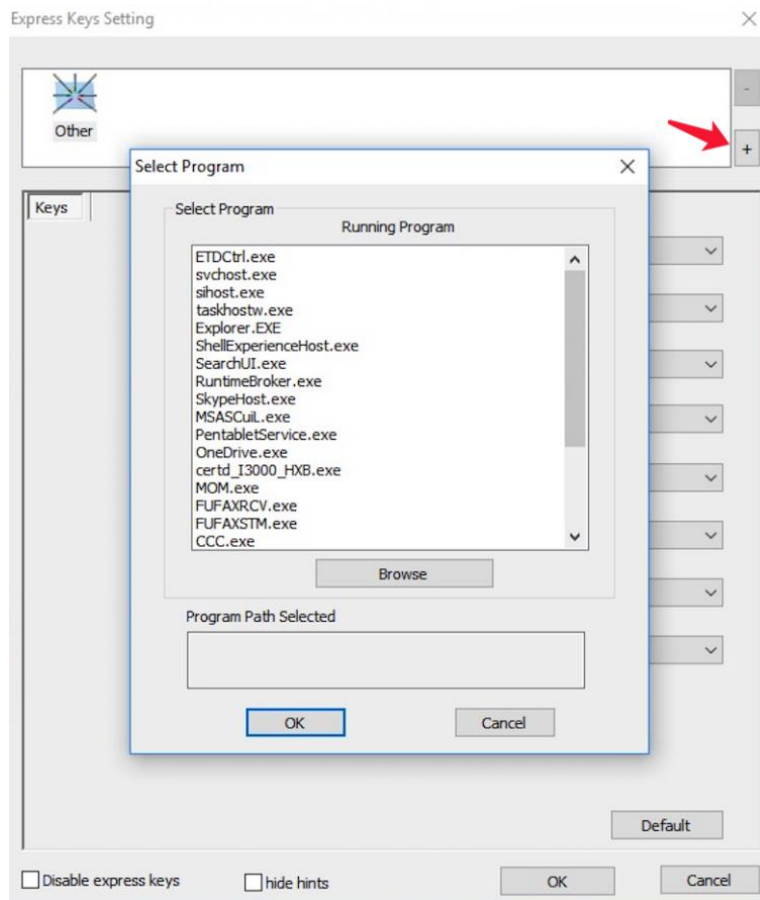


Image 4-15. Select Program

b. You can choose Default or use Browse to select your choice of software.

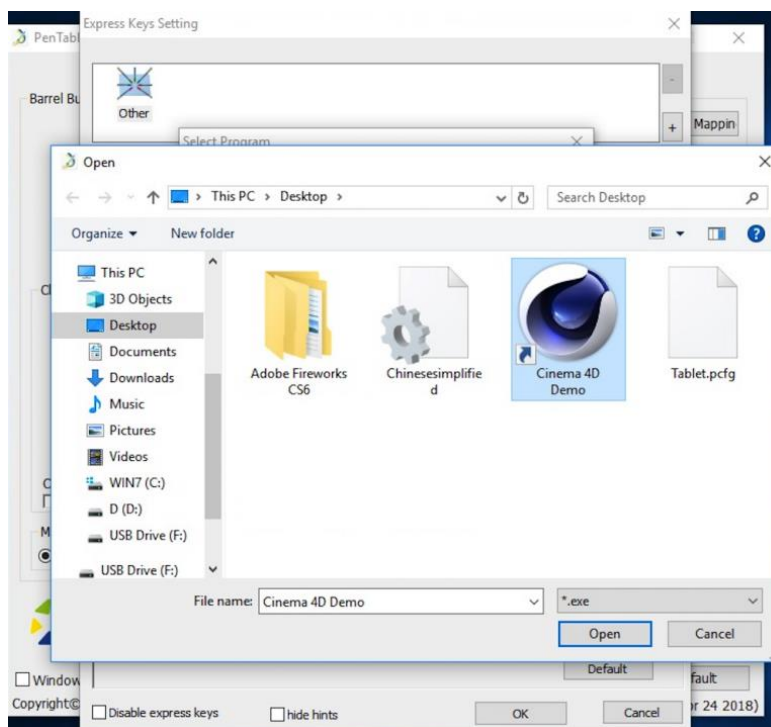


Image 4-16. Select Program

c. Return to the express key settings tab, click software icon, and then customize the express keys. When you are finished, click the OK button and exit the graphic display settings menu.

**You can set each dial for different software.**

a. Click software icon first then go to Dial or Dial2 tab.

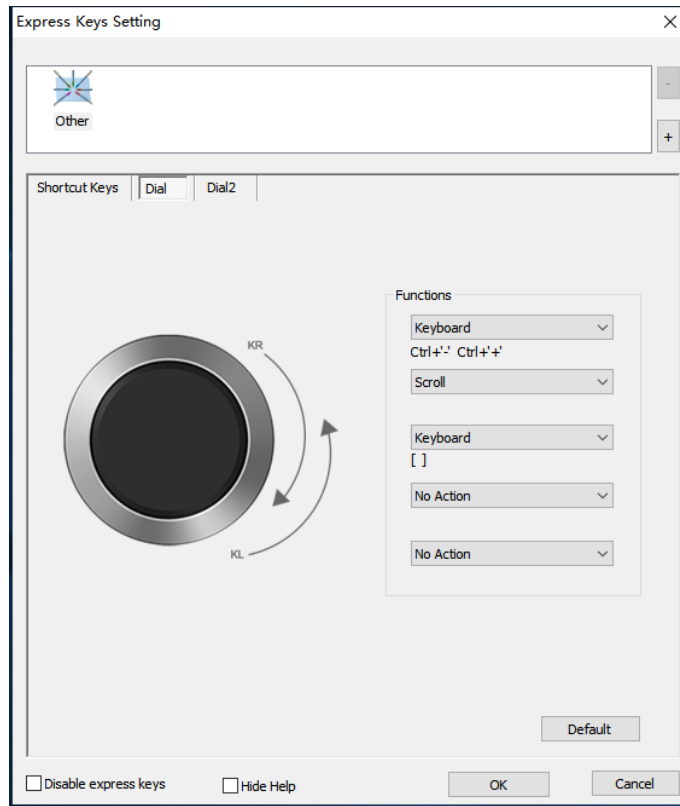


Image 4-17. Dial

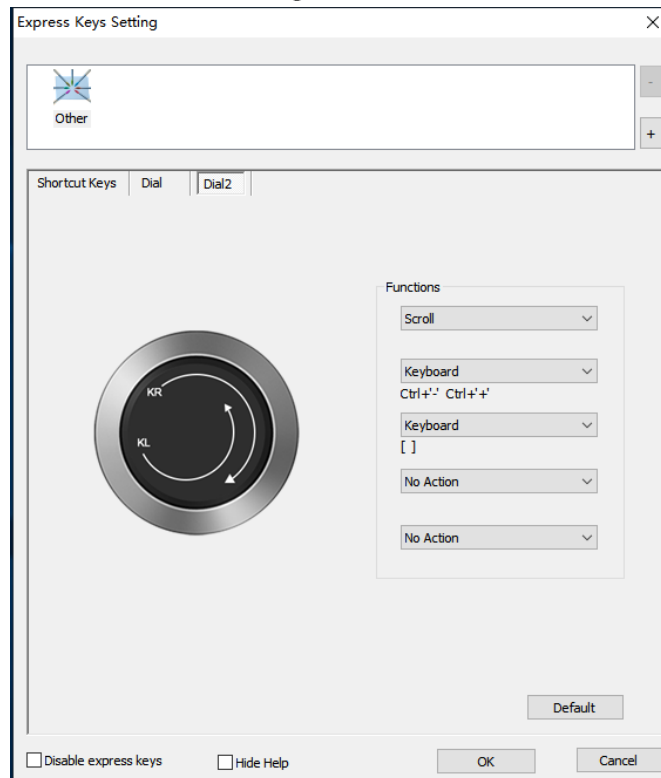


Image 4-18. Dial2

b. Click each dial function to “Function key” .

c. On the setting tab, you can customize “KL” and “KR” to different express like Ctrl+ & Ctrl-.

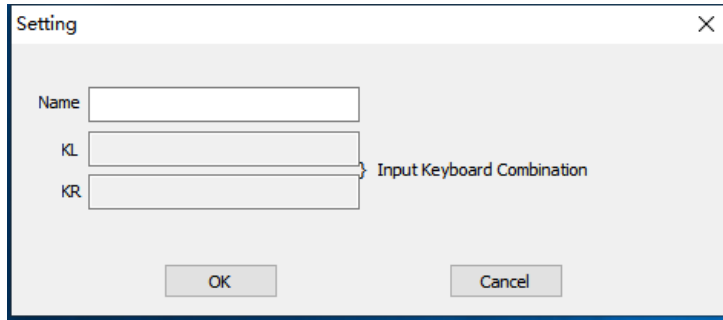


Image 4-19. Setting

### 1.10. Default

You can click the Default button to restore default settings.

### 1.11. XP-Pen Logo

Click our logo to visit our website.



Image 4-20. XP-Pen Logo

## Mac Driver UI

To open the graphic display's driver settings, open Finder - Applications - PenTabletSetting.

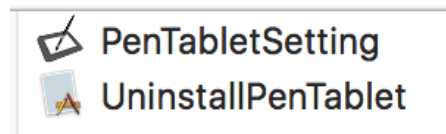


Image 4-21. Tablet Setting

### 1.1. Pen

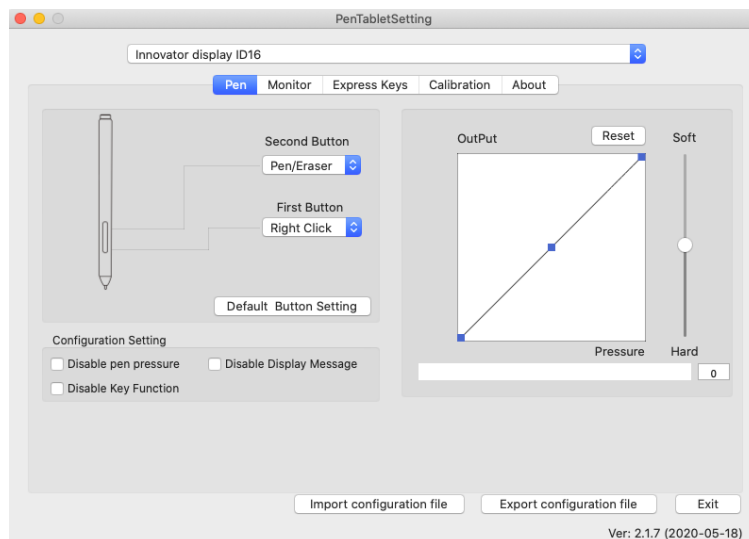


Image 4-22. Mac UI



- a. In this tab, you may customize the functions of your stylus' s barrel buttons, adjust pressure sensitivity, and test your pen pressure.
- b. Click “Default Button Setting” to revert to manufacturer settings.

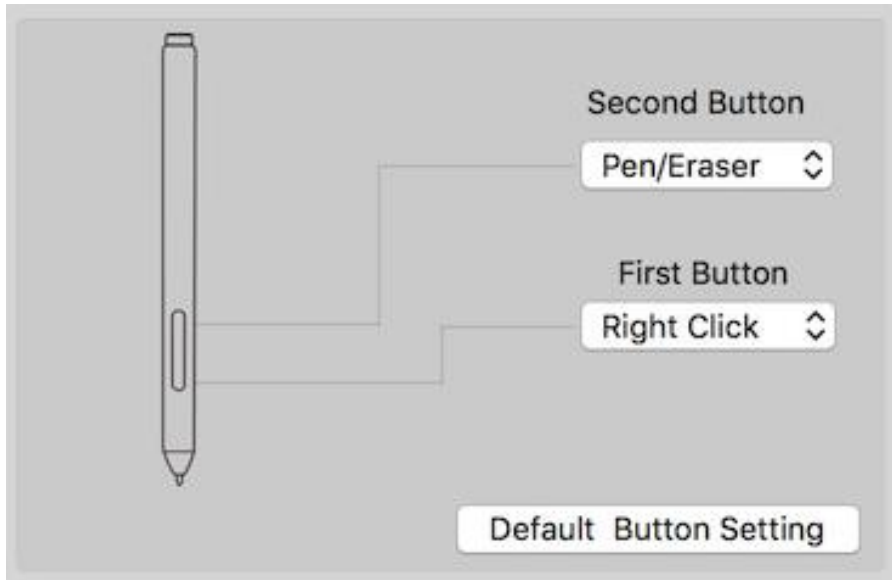


Image 4-23. Pen

**Note:**

**Pen/Eraser Toggle**

With the stylus in range of the graphic display' s active area, press the assigned barrel button to toggle between pen and eraser modes in compatible drawing software. The current mode will briefly be displayed on your monitor.

- c. Disable pen pressure: When the “Disable pen pressure” function is enabled, you can disable the pen pressure function.
- d. Disable Key Function: When you enable it, all of the express keys function will be disabled.
- e. Disable Display Message: When you enable it and press any express key, the message will not popup on the bottom of your screen.

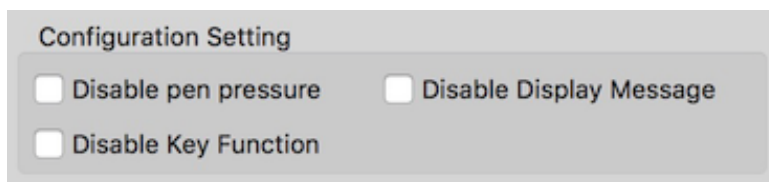


Image 4-24. Configuration Setting

- f. Output: You can adjust pen pressure to “Output” or “Press” sensitivity on here. It shows the current pressure level being exerted on your graphic display and can be used to test pen pressure.

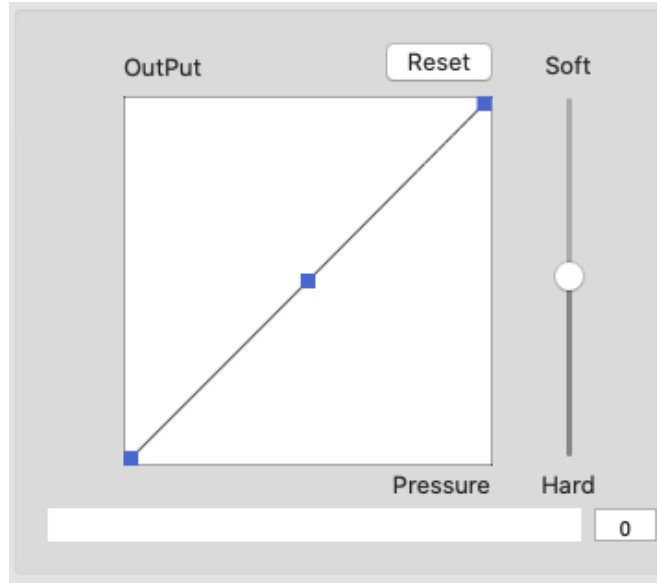


Image 4-25. Output

g. Import & Export Profiles: You can use the Import & Export Profile function to save/load your barrel buttons and express keys setting.



Image 4-26. Import & Export Profiles

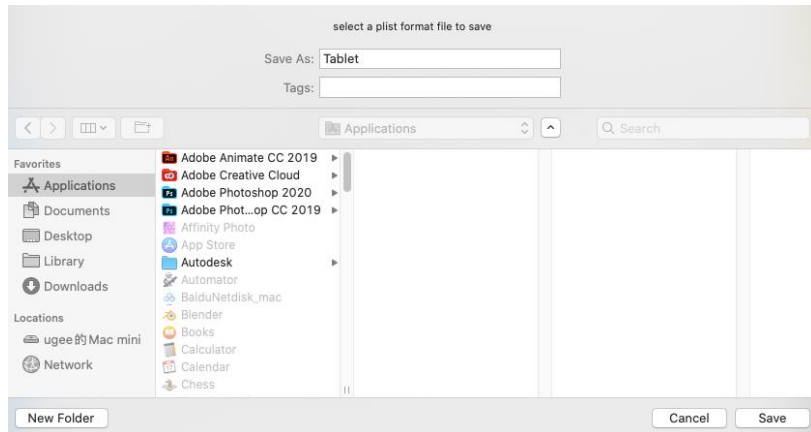


Image 4-27. Export configuration file

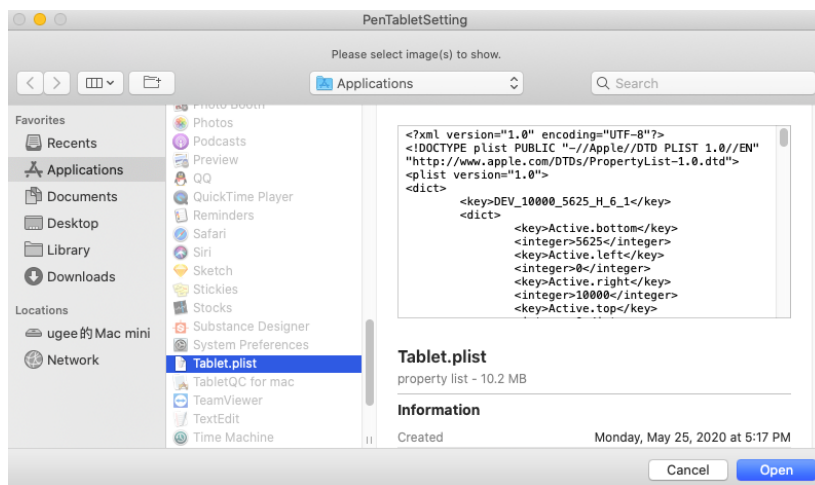


Image 4-28. Import configuration file

## 1.2. Monitor

The “Monitor” tab allows you to configure your graphic display to use Main monitor (monitor1) or graphic display (monitor2).

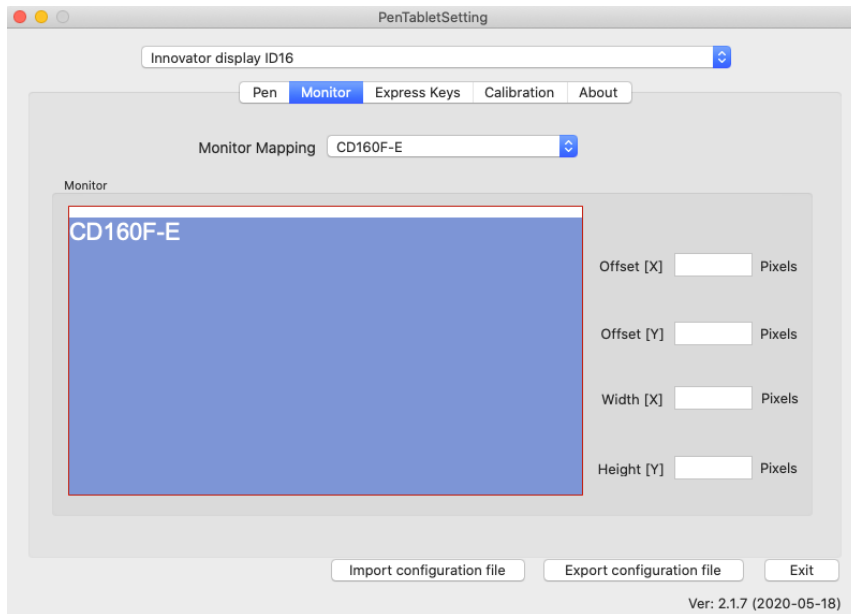


Image 4-29. Monitor

## 1.3. Express Keys

### Notes:

- The graphic display’ s express keys are designed to work with US English keyboards. Keys may not function correctly with the other keyboard languages.
- By default, the graphic display express keys are mapped to standard Photoshop keyboard express. Keys can be customized to function efficiently in other software.
- You must set one of the express keys from Switch function to switch dial.

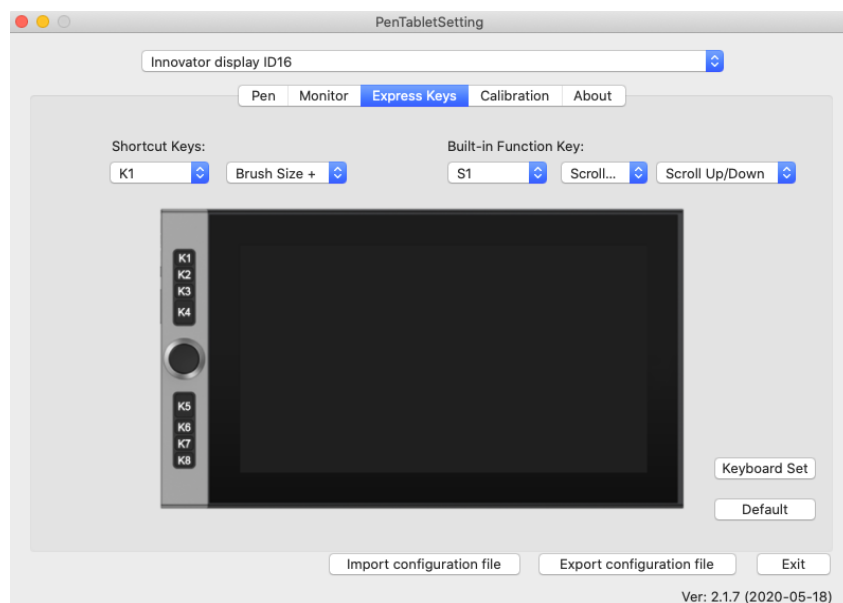


Image 4-30. Express Keys

In the Express Keys tab, you may choose your preferred functions for the graphic display's express keys. Use the “Reset Customer Defined” option to program custom keystrokes.

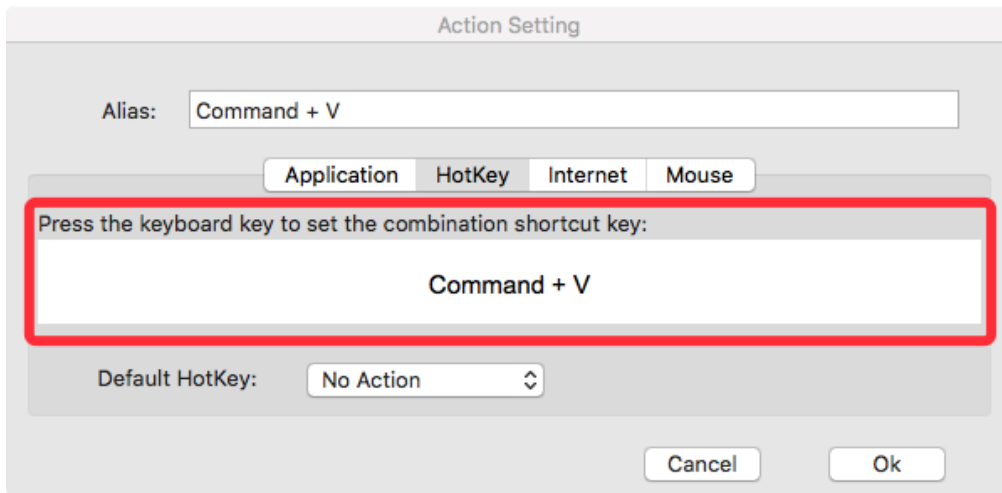


Image 4-31. Action Setting

**You can set each express key for different software.**

a. Click the “+” button to go to Select Program tab.

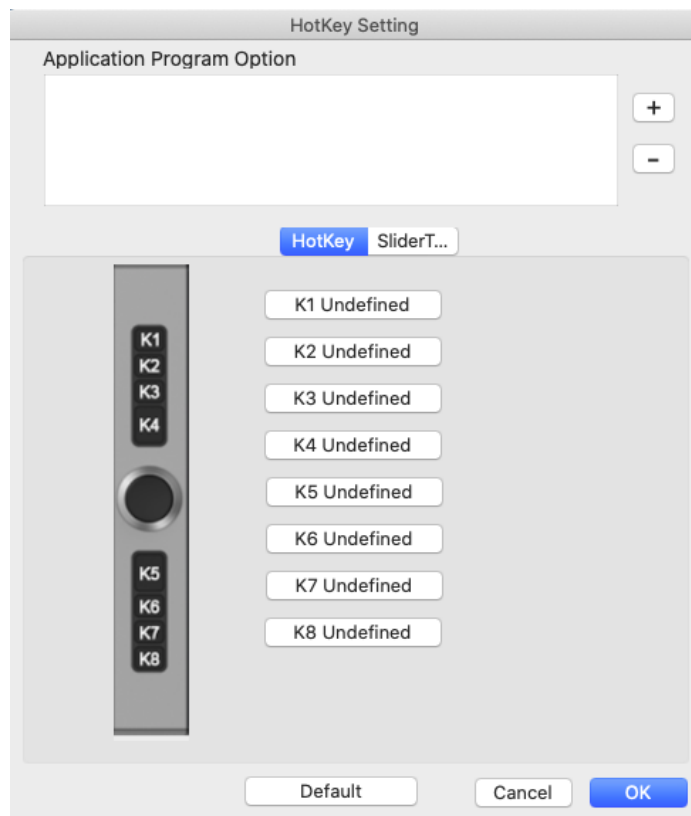


Image 4-32. Select Program

b. Your choice of software.

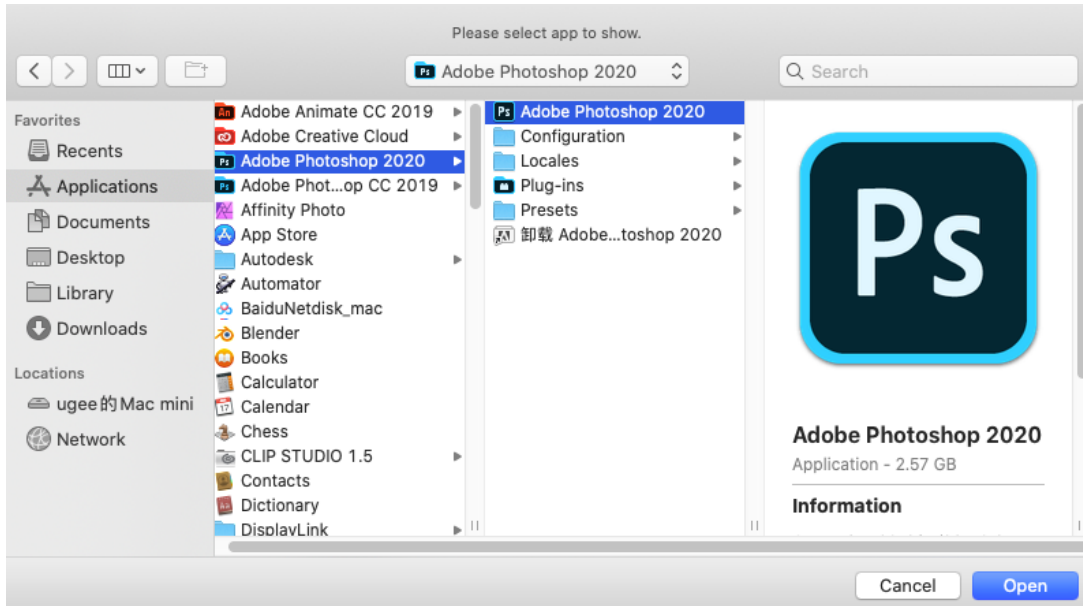


Image 4-33. Select Program

- c. Return to the express key settings tab, click the software icon then customize the express keys. When you are finished, click the OK button and exit the graphic display settings menu.

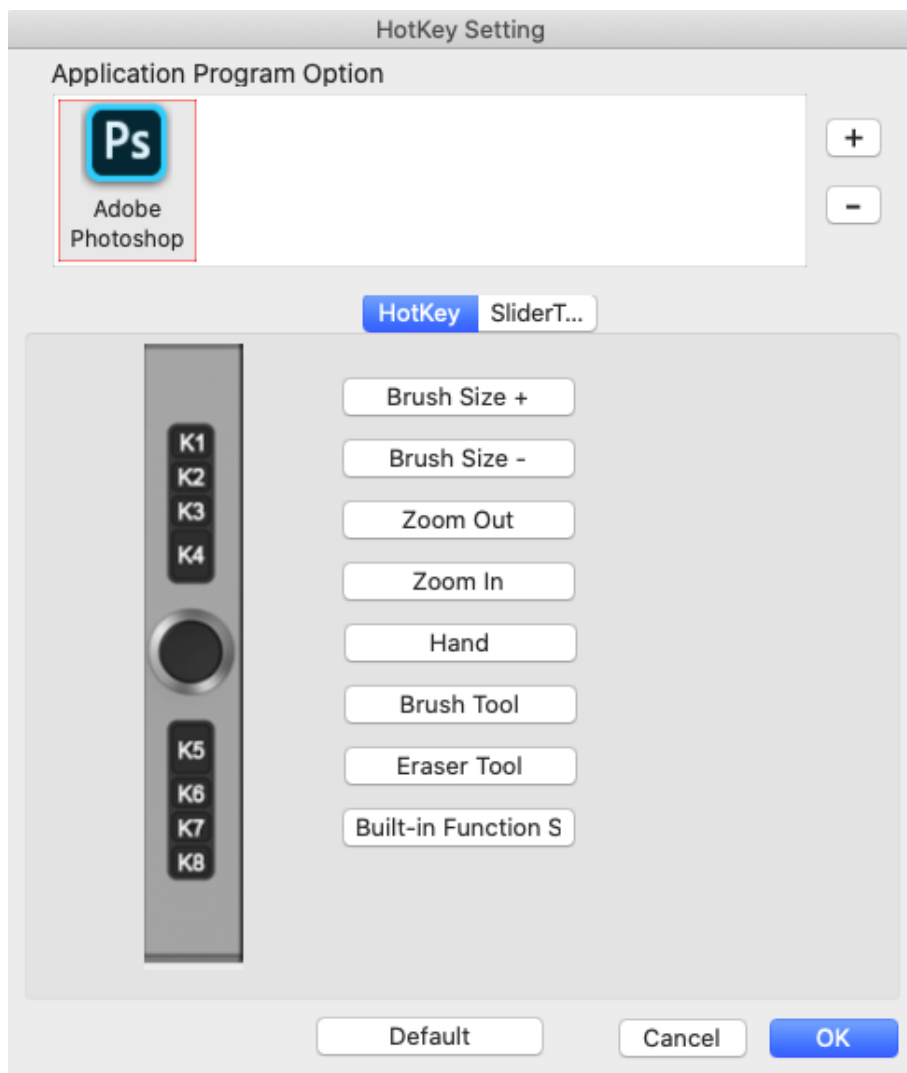


Image 4-34. Hot Key

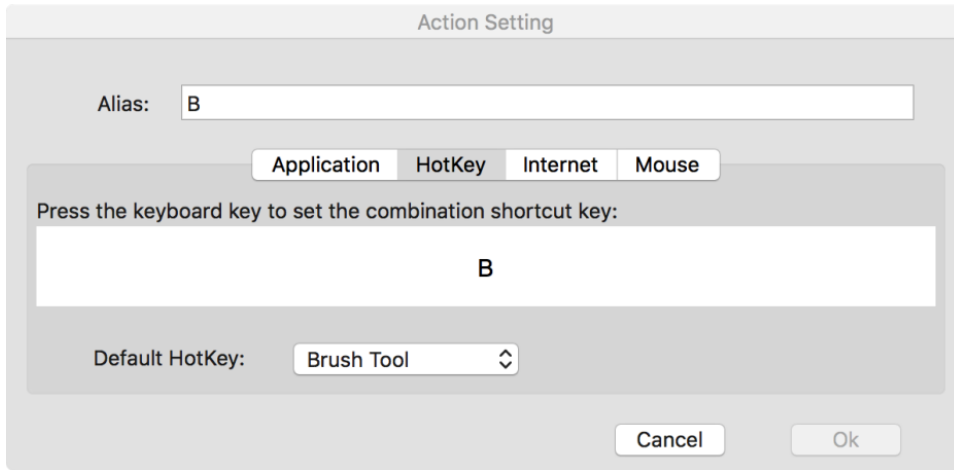


Image 4-35. Action Setting

You can set each dial for different software.

a. Click the software icon first and then go to the Dial S1 & S2 tab.

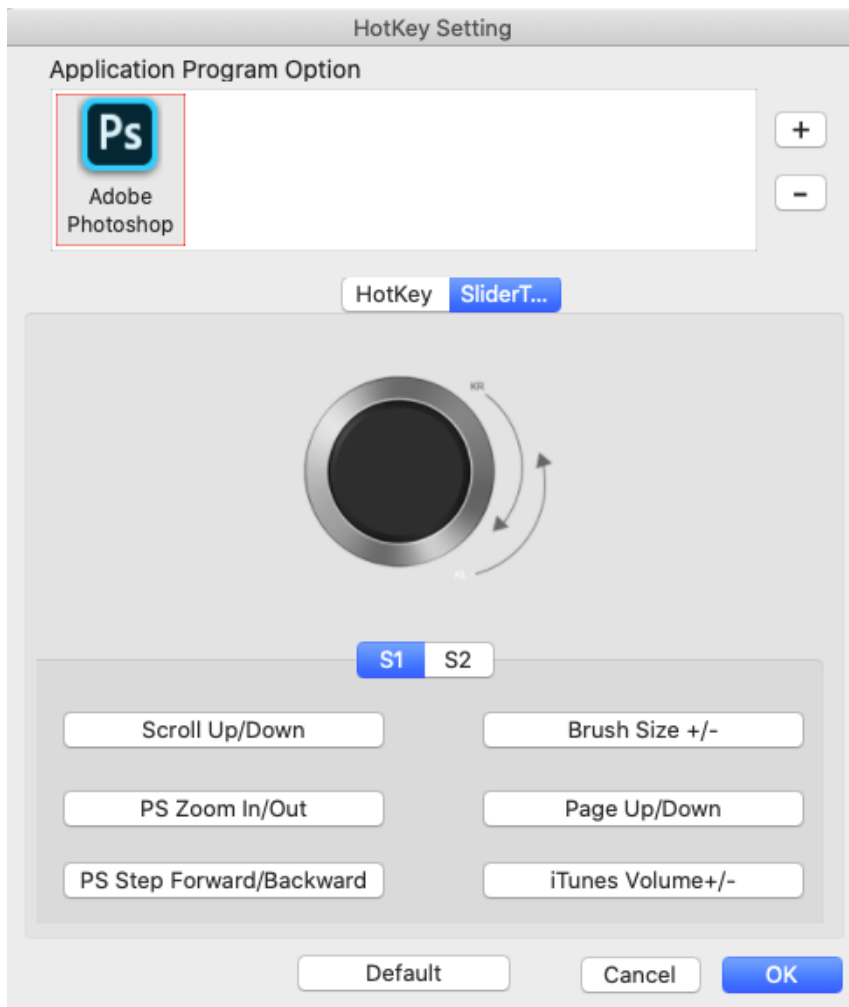


Image 4-36. Slider

b. Click each dial function.

c. On the setting tab, you can customize “Left HotKey” and “Right HotKey” to different express like Ctrl+ & Ctrl-.

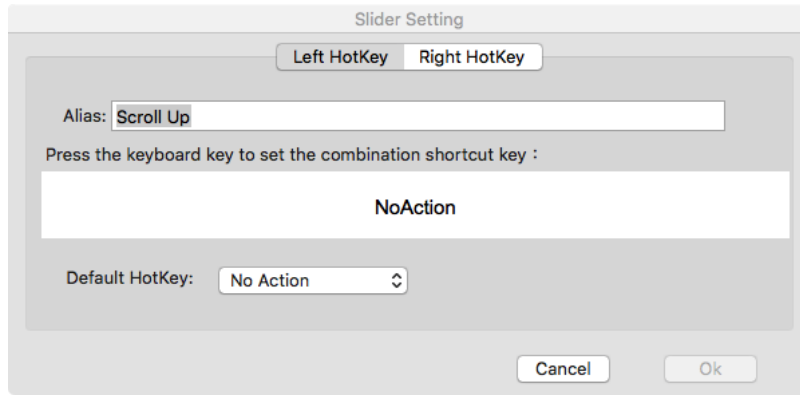


Image 4-37. Slider Setting

## 1.4. Calibration

The Calibration tab allows you to calibrate your graphic display or rotate your display. To calibrate, click Calibration and follow the on-screen instructions.

Rotate: You may rotate the graphic display' s display in this tab.

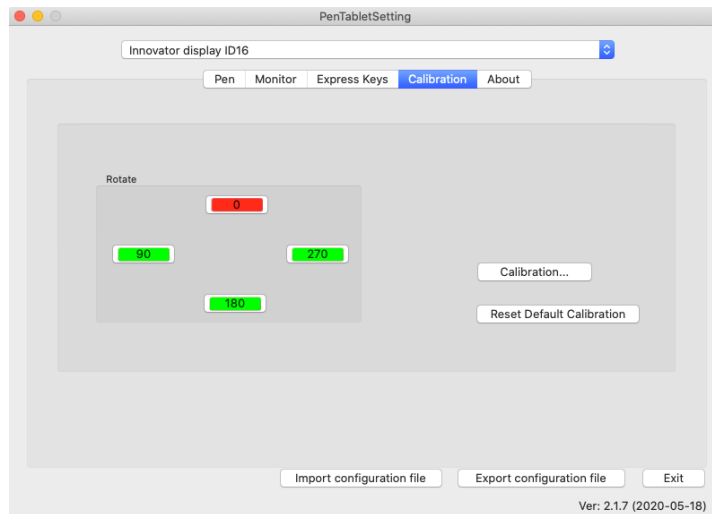


Image 4-38. Calibration

## 1.5. About

This tab displays the current version of your driver software.

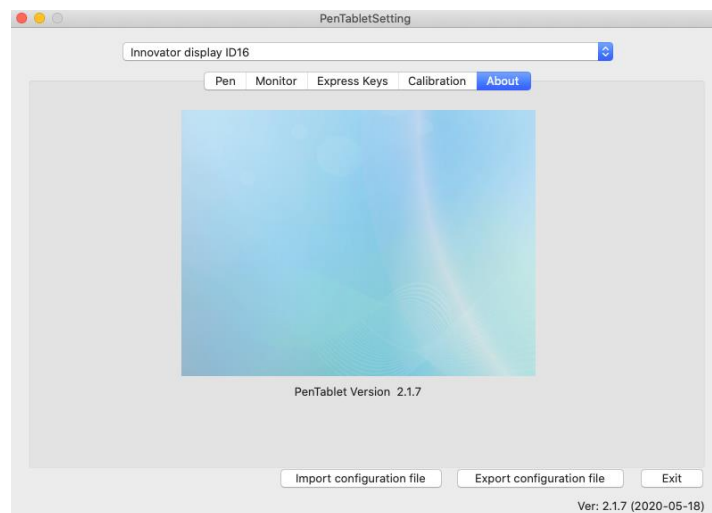


Image 4-39. About

# { V. Driver Uninstall }

## Windows

In the Start menu, open [Settings] → [Apps & features]. Find “Pentablet” and click “Uninstall.” Follow the on-screen instructions.

## Mac

Open [Finder]→ [Application]→ [Pen Tablet], then click “Uninstall Pen Tablet” and follow the on-screen instructions.

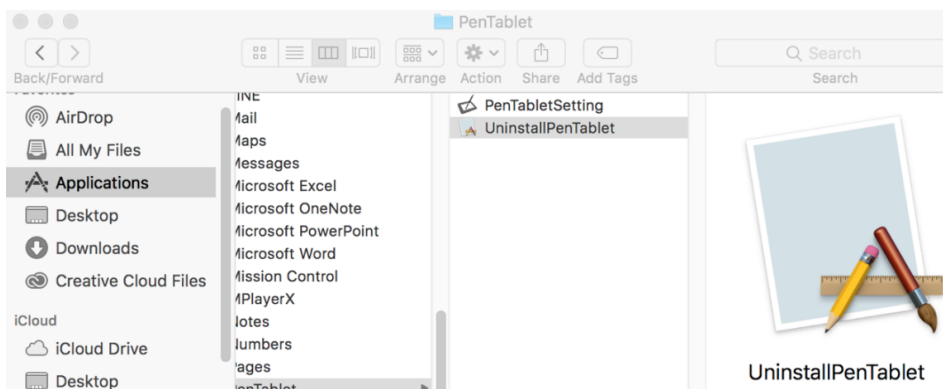


Image 5-1. Mac uninstall

### NOTE :

When attempting to reinstall the graphic display driver, be sure to reboot your computer after the uninstall is complete.

# { VI. FAQ }

## 1. Where can I download the latest graphic display driver?

Latest driver releases can be downloaded from our website ([www.xp-pen.com](http://www.xp-pen.com)).


## 2. I can't use the stylus to control the cursor.

- a. Turn on your graphic display and make sure you can see the display.
- b. Reinstall the driver and then find the graphic display icon in the system tray.
- c. Open it and test the pen pressure gauge inside
- d. If you can't test the pen pressure, please uninstall the driver and reboot. Make sure your computer login account has Administrator authority.



- e. The graphic display supports plug and play, please test your stylus pens function before reinstalling the driver. If you have control, please disable your antivirus then go to the XP-Pen website to download the latest driver.
- f. When the download is complete, please unzip and extract the contents of the folder to run the “.exe” , “.dmg” or “.pkg” installation file.
- g. Open the graphic display setting again then make sure can you use the pen pressure on it

### **3. How do I know that the graphic display driver installed successfully?**

After installing the driver, the graphic display’ s driver icon (  ) should be visible in your system tray on the bottom-right of your screen (Windows OS) and desktop. Pen input will control the cursor and pressure sensitivity will be functional in the driver.

### **4. Why can’ t I use the pen pressure on the drawing software?**

- a. Please make sure the drawing software can support pen pressure.
- b. Make sure you have the latest driver installed.
- c. Open the graphic display setting and make sure you can test the pen pressure in it.
- d. Enable the “windows ink” function then click the ok button to exit. Open the drawing software again and test your pen pressure.
- e. Please note our graphic display do not come with drawing software.

### **5. Is it possible to use the type-C USB cable to connect the graphic display?**

The graphic display does not support type-C USB cable. Please make sure to use the 3-in-1 USB cable in the accessory box to connect.

**If you have any questions, please contact us at:**

**Web: [www.xp-pen.com](http://www.xp-pen.com)**

**Email: [service@xp-pen.com](mailto:service@xp-pen.com)**